

## เอกสารกำกับยาภาษาอังกฤษสำหรับแพทย์

## INVOKANA®

## FULL PRESCRIBING INFORMATION

**WARNING: LOWER LIMB AMPUTATION**

- An approximately 2-fold increased risk of lower limb amputations associated with INVOKANA use was observed in CANVAS and CANVAS-R, two large, randomized, placebo-controlled trials in patients with type 2 diabetes who had established cardiovascular disease (CVD) or were at risk for CVD.
- Amputations of the toe and midfoot were most frequent; however, amputations involving the leg were also observed. Some patients had multiple amputations, some involving both limbs.
- Before initiating, consider factors that may increase the risk of amputation, such as a history of prior amputation, peripheral vascular disease, neuropathy, and diabetic foot ulcers.
- Monitor patients receiving INVOKANA for infection, new pain or tenderness, sores or ulcers involving the lower limbs, and discontinue if these complications occur [*see Warnings and Precautions (5.1)*].

**1 INDICATIONS AND USAGE**

INVOKANA® (canagliflozin) is indicated as an adjunct to diet and exercise to improve glycemic control in adults with type 2 diabetes mellitus [*see Clinical Studies (14)*].

Limitation of Use

INVOKANA is not recommended in patients with type 1 diabetes mellitus or for the treatment of diabetic ketoacidosis.

**2 DOSAGE AND ADMINISTRATION****2.1 Recommended Dosage**

The recommended starting dose of INVOKANA (canagliflozin) is 100 mg once daily, taken before the first meal of the day. In patients tolerating INVOKANA 100 mg once daily who have an eGFR of 60 mL/min/1.73 m<sup>2</sup> or greater and require additional glycemic control, the dose can be increased to 300 mg once daily [*see Warnings and Precautions (5.4), Clinical Pharmacology (12.2), and Patient Counseling Information (17)*].

In patients with volume depletion, correcting this condition prior to initiation of INVOKANA is recommended [see *Warnings and Precautions (5.2), Use in Specific Populations (8.5 and 8.6), and Patient Counseling Information (17)*].

## 2.2 Patients with Renal Impairment

Assessment of renal function is recommended prior to initiation of INVOKANA and periodically thereafter.

The dose of INVOKANA is limited to 100 mg once daily in patients with moderate renal impairment with an eGFR of 45 to less than 60 mL/min/1.73 m<sup>2</sup>.

Initiation of INVOKANA is not recommended in patients with an eGFR less than 45 mL/min/1.73 m<sup>2</sup>.

Use of INVOKANA is not recommended when eGFR is persistently less than 45 mL/min/1.73 m<sup>2</sup> [see *Warnings and Precautions (5.4) and Use in Specific Populations (8.6)*].

INVOKANA is contraindicated in patients with an eGFR less than 30 mL/min/1.73 m<sup>2</sup> [see *Contraindications (4)*].

## 2.3 Concomitant Use with UDP-Glucuronosyl Transferase (UGT) Enzyme Inducers

If an inducer of UGTs (e.g., rifampin, phenytoin, phenobarbital, ritonavir) is co-administered with INVOKANA, consider increasing the dosage to 300 mg once daily in patients currently tolerating INVOKANA 100 mg once daily who have an eGFR of 60 mL/min/1.73 m<sup>2</sup> or greater and require additional glycemic control [see *Drug Interactions (7.1)*].

Consider another antihyperglycemic agent in patients with an eGFR of 45 to less than 60 mL/min/1.73 m<sup>2</sup> receiving concurrent therapy with a UGT inducer.

## 3 DOSAGE FORMS AND STRENGTHS

- INVOKANA 100 mg tablets are yellow, capsule-shaped, film-coated tablets with “CFZ” on one side and “100” on the other side.
- INVOKANA 300 mg tablets are white, capsule-shaped, film-coated tablets with “CFZ” on one side and “300” on the other side.

## 4 CONTRAINDICATIONS

- History of a serious hypersensitivity reaction to INVOKANA, such as anaphylaxis or angioedema [see *Warnings and Precautions (5.9) and Adverse Reactions (6.1, 6.2)*].
- Severe renal impairment (eGFR less than 30 mL/min/1.73 m<sup>2</sup>), end stage renal disease (ESRD), or patients on dialysis [see *Warnings and Precautions (5.4) and Use in Specific Populations (8.6)*].

## 5 WARNINGS AND PRECAUTIONS

### 5.1 Lower Limb Amputation

An approximately 2-fold increased risk of lower limb amputations associated with INVOKANA use was observed in CANVAS and CANVAS-R, two large, randomized, placebo-controlled trials evaluating patients with type 2 diabetes who had either established cardiovascular disease or were at risk for cardiovascular disease. In CANVAS, INVOKANA-treated patients and placebo-treated patients had 5.9 and 2.8 amputations per 1000 patients per year, respectively. In CANVAS-R, INVOKANA-treated patients and placebo-treated patients had 7.5 and 4.2 amputations per 1000 patients per year, respectively. The risk of lower limb amputations was observed at both the 100 mg and 300 mg once daily dosage regimens. The amputation data for CANVAS and CANVAS-R are shown in Tables 2 and 3, respectively [*see Adverse Reactions (6.1)*].

Amputations of the toe and midfoot (99 out of 140 patients with amputations receiving INVOKANA in the two trials) were the most frequent; however, amputations involving the leg, below and above the knee, were also observed (41 out of 140 patients with amputations receiving INVOKANA in the two trials). Some patients had multiple amputations, some involving both lower limbs.

Lower limb infections, gangrene, and diabetic foot ulcers were the most common precipitating medical events leading to the need for an amputation. The risk of amputation was highest in patients with a baseline history of prior amputation, peripheral vascular disease, and neuropathy.

Before initiating INVOKANA, consider factors in the patient history that may predispose to the need for amputations, such as a history of prior amputation, peripheral vascular disease, neuropathy and diabetic foot ulcers. Counsel patients about the importance of routine preventative foot care. Monitor patients receiving INVOKANA for signs and symptoms of infection (including osteomyelitis), new pain or tenderness, sores or ulcers involving the lower limbs, and discontinue INVOKANA if these complications occur.

### 5.2 Hypotension

INVOKANA causes intravascular volume contraction. Symptomatic hypotension can occur after initiating INVOKANA [*see Adverse Reactions (6.1)*] particularly in patients with impaired renal function (eGFR less than 60 mL/min/1.73 m<sup>2</sup>), elderly patients, patients on either diuretics or medications that interfere with the renin-angiotensin-aldosterone system (e.g., angiotensin-converting-enzyme [ACE] inhibitors, angiotensin receptor blockers [ARBs]), or patients with low systolic blood pressure. Before initiating INVOKANA in patients with one or more of these characteristics, volume status should be assessed and corrected. Monitor for signs and symptoms after initiating therapy.

### 5.3 Ketoacidosis

Reports of ketoacidosis, a serious life-threatening condition requiring urgent hospitalization have been identified in postmarketing surveillance in patients with type 1 and type 2 diabetes mellitus receiving sodium glucose co-transporter-2 (SGLT2) inhibitors, including INVOKANA. Fatal cases of ketoacidosis have been reported in patients taking INVOKANA. INVOKANA is not indicated for the treatment of patients with type 1 diabetes mellitus [*see Indications and Usage (1)*].

Patients treated with INVOKANA who present with signs and symptoms consistent with severe metabolic acidosis should be assessed for ketoacidosis regardless of presenting blood glucose levels, as ketoacidosis associated with INVOKANA may be present even if blood glucose levels are less than 250 mg/dL. If ketoacidosis is suspected, INVOKANA should be discontinued, patient should be evaluated, and prompt treatment should be instituted. Treatment of ketoacidosis may require insulin, fluid and carbohydrate replacement.

In many of the postmarketing reports, and particularly in patients with type 1 diabetes, the presence of ketoacidosis was not immediately recognized and institution of treatment was delayed because presenting blood glucose levels were below those typically expected for diabetic ketoacidosis (often less than 250 mg/dL). Signs and symptoms at presentation were consistent with dehydration and severe metabolic acidosis and included nausea, vomiting, abdominal pain, generalized malaise, and shortness of breath. In some but not all cases, factors predisposing to ketoacidosis such as insulin dose reduction, acute febrile illness, reduced caloric intake due to illness or surgery, pancreatic disorders suggesting insulin deficiency (e.g., type 1 diabetes, history of pancreatitis or pancreatic surgery), and alcohol abuse were identified.

Before initiating INVOKANA, consider factors in the patient history that may predispose to ketoacidosis including pancreatic insulin deficiency from any cause, caloric restriction, and alcohol abuse. In patients treated with INVOKANA consider monitoring for ketoacidosis and temporarily discontinuing INVOKANA in clinical situations known to predispose to ketoacidosis (e.g., prolonged fasting due to acute illness or surgery).

#### **5.4 Acute Kidney Injury and Impairment in Renal Function**

INVOKANA causes intravascular volume contraction [*see Warnings and Precautions (5.2)*] and can cause renal impairment [*see Adverse Reactions (6.1)*]. There have been postmarketing reports of acute kidney injury, some requiring hospitalization and dialysis, in patients receiving INVOKANA; some reports involved patients younger than 65 years of age.

Before initiating INVOKANA, consider factors that may predispose patients to acute kidney injury including hypovolemia, chronic renal insufficiency, congestive heart failure and concomitant medications (diuretics, ACE inhibitors, ARBs, NSAIDs). Consider temporarily discontinuing INVOKANA in any setting of reduced oral intake (such as acute illness or fasting) or fluid losses (such as gastrointestinal illness or excessive heat exposure); monitor patients for signs and symptoms of acute kidney injury. If acute kidney injury occurs, discontinue INVOKANA promptly and institute treatment.

INVOKANA increases serum creatinine and decreases eGFR. Patients with hypovolemia may be more susceptible to these changes. Renal function abnormalities can occur after initiating INVOKANA [*see Adverse Reactions (6.1)*]. Renal function should be evaluated prior to initiation of INVOKANA and monitored periodically thereafter. Dosage adjustment and more frequent renal function monitoring are recommended in patients with an eGFR below 60 mL/min/1.73 m<sup>2</sup>. Use of INVOKANA is not recommended when eGFR is persistently less than 45 mL/min/1.73 m<sup>2</sup> and is contraindicated in patients with an eGFR less than 30 mL/min/1.73 m<sup>2</sup> [*see Dosage and Administration (2.2), Contraindications (4) and Use in Specific Populations (8.6)*].

## 5.5 Hyperkalemia

INVOKANA can lead to hyperkalemia. Patients with moderate renal impairment who are taking medications that interfere with potassium excretion, such as potassium-sparing diuretics, or medications that interfere with the renin-angiotensin-aldosterone system are at an increased risk of developing hyperkalemia [see *Dosage and Administration (2.2) and Adverse Reactions (6.1)*].

Monitor serum potassium levels periodically after initiating INVOKANA in patients with impaired renal function and in patients predisposed to hyperkalemia due to medications or other medical conditions.

## 5.6 Urosepsis and Pyelonephritis

There have been postmarketing reports of serious urinary tract infections including urosepsis and pyelonephritis requiring hospitalization in patients receiving SGLT2 inhibitors, including INVOKANA. Treatment with SGLT2 inhibitors increases the risk for urinary tract infections. Evaluate patients for signs and symptoms of urinary tract infections and treat promptly, if indicated [see *Adverse Reactions (6)*].

## 5.7 Hypoglycemia with Concomitant Use with Insulin and Insulin Secretagogues

Insulin and insulin secretagogues are known to cause hypoglycemia. INVOKANA can increase the risk of hypoglycemia when combined with insulin or an insulin secretagogue [see *Adverse Reactions (6.1)*]. Therefore, a lower dose of insulin or insulin secretagogue may be required to minimize the risk of hypoglycemia when used in combination with INVOKANA.

## 5.8 Genital Mycotic Infections

INVOKANA increases the risk of genital mycotic infections. Patients with a history of genital mycotic infections and uncircumcised males were more likely to develop genital mycotic infections [see *Adverse Reactions (6.1)*]. Monitor and treat appropriately.

## 5.9 Hypersensitivity Reactions

Hypersensitivity reactions, including angioedema and anaphylaxis, have been reported with INVOKANA. These reactions generally occurred within hours to days after initiating INVOKANA. If hypersensitivity reactions occur, discontinue use of INVOKANA; treat and monitor until signs and symptoms resolve [see *Contraindications (4) and Adverse Reactions (6.1, 6.2)*].

## 5.10 Bone Fracture

An increased risk of bone fracture, occurring as early as 12 weeks after treatment initiation, was observed in patients using INVOKANA. Consider factors that contribute to fracture risk prior to initiating INVOKANA [see *Adverse Reactions (6.1)*].

## 5.11 Increases in Low-Density Lipoprotein (LDL-C)

Dose-related increases in LDL-C occur with INVOKANA [see *Adverse Reactions (6.1)*]. Monitor LDL-C and treat if appropriate after initiating INVOKANA.

## 5.12 Macrovascular Outcomes

There have been no clinical studies establishing conclusive evidence of macrovascular risk reduction with INVOKANA [see *Adverse Reactions (6.1)*].

## 6 ADVERSE REACTIONS

The following important adverse reactions are described below and elsewhere in the labeling:

- Lower Limb Amputation [see *Boxed Warning and Warnings and Precautions (5.1)*]
- Hypotension [see *Warnings and Precautions (5.2)*]
- Ketoacidosis [see *Warnings and Precautions (5.3)*]
- Acute Kidney Injury and Impairment in Renal Function [see *Warnings and Precautions (5.4)*]
- Hyperkalemia [see *Warnings and Precautions (5.5)*]
- Urosepsis and Pyelonephritis [see *Warnings and Precautions (5.6)*]
- Hypoglycemia with Concomitant Use with Insulin and Insulin Secretagogues [see *Warnings and Precautions (5.7)*]
- Genital Mycotic Infections [see *Warnings and Precautions (5.8)*]
- Hypersensitivity Reactions [see *Warnings and Precautions (5.9)*]
- Bone Fracture [see *Warnings and Precautions (5.10)*]
- Increases in Low-Density Lipoprotein (LDL-C) [see *Warnings and Precautions (5.11)*]

### 6.1 Clinical Studies Experience

Because clinical trials are conducted under widely varying conditions, adverse reaction rates observed in the clinical trials of a drug cannot be directly compared to the rates in the clinical trials of another drug and may not reflect the rates observed in clinical practice.

#### Pool of Placebo-Controlled Trials

The data in Table 1 is derived from four 26-week placebo-controlled trials. In one trial INVOKANA was used as monotherapy and in three trials INVOKANA was used as add-on therapy [see *Clinical Studies (14)*]. These data reflect exposure of 1667 patients to INVOKANA and a mean duration of exposure to INVOKANA of 24 weeks. Patients received INVOKANA 100 mg (N=833), INVOKANA 300 mg (N=834) or placebo (N=646) once daily. The mean age of the population was 56 years and 2% were older than 75 years of age. Fifty percent (50%) of the population was male and 72% were Caucasian, 12% were Asian, and 5% were Black or African American. At baseline the population had diabetes for an average of 7.3 years, had a mean HbA<sub>1c</sub> of 8.0% and 20% had established microvascular complications of diabetes. Baseline renal function was normal or mildly impaired (mean eGFR 88 mL/min/1.73 m<sup>2</sup>).

Table 1 shows common adverse reactions associated with the use of INVOKANA. These adverse reactions were not present at baseline, occurred more commonly on INVOKANA than on placebo, and occurred in at least 2% of patients treated with either INVOKANA 100 mg or INVOKANA 300 mg.

**Table 1: Adverse Reactions From Pool of Four 26-Week Placebo-Controlled Studies Reported in  $\geq 2\%$  of INVOKANA-Treated Patients\***

Adverse Reaction	Placebo N=646	INVOKANA 100 mg N=833	INVOKANA 300 mg N=834
Urinary tract infections <sup>‡</sup>	3.8%	5.9%	4.4%
Increased urination <sup>§</sup>	0.7%	5.1%	4.6%
Thirst <sup>#</sup>	0.1%	2.8%	2.4%
Constipation	0.9%	1.8%	2.4%
Nausea	1.6%	2.1%	2.3%
	<b>N=312</b>	<b>N=425</b>	<b>N=430</b>
Female genital mycotic infections <sup>†</sup>	2.8%	10.6%	11.6%
Vulvovaginal pruritus	0.0%	1.6%	3.2%
	<b>N=334</b>	<b>N=408</b>	<b>N=404</b>
Male genital mycotic infections <sup>¶</sup>	0.7%	4.2%	3.8%

\* The four placebo-controlled trials included one monotherapy trial and three add-on combination trials with metformin, metformin and sulfonylurea, or metformin and pioglitazone.

† Female genital mycotic infections include the following adverse reactions: Vulvovaginal candidiasis, Vulvovaginal mycotic infection, Vulvovaginitis, Vaginal infection, Vulvitis, and Genital infection fungal.

‡ Urinary tract infections include the following adverse reactions: Urinary tract infection, Cystitis, Kidney infection, and Urosepsis.

§ Increased urination includes the following adverse reactions: Polyuria, Pollakiuria, Urine output increased, Micturition urgency, and Nocturia.

¶ Male genital mycotic infections include the following adverse reactions: Balanitis or Balanoposthitis, Balanitis candida, and Genital infection fungal.

# Thirst includes the following adverse reactions: Thirst, Dry mouth, and Polydipsia.

Note: Percentages were weighted by studies. Study weights were proportional to the harmonic mean of the three treatment sample sizes.

Abdominal pain was also more commonly reported in patients taking INVOKANA 100 mg (1.8%), 300 mg (1.7%) than in patients taking placebo (0.8%).

### Pool of Placebo- and Active-Controlled Trials

The occurrence of adverse reactions for canagliflozin was evaluated in a larger pool of patients participating in placebo- and active-controlled trials.

The data combined eight clinical trials [see *Clinical Studies (14)*] and reflect exposure of 6177 patients to INVOKANA. The mean duration of exposure to INVOKANA was 38 weeks with 1832 individuals exposed to INVOKANA for greater than 50 weeks. Patients received INVOKANA 100 mg (N=3092), INVOKANA 300 mg (N=3085) or comparator (N=3262) once daily. The mean age of the population was 60 years and 5% were older than 75 years of age. Fifty-eight percent (58%) of the population was male and 73% were Caucasian, 16% were Asian, and 4% were Black or African American. At baseline, the population had diabetes for an average of 11 years, had a mean HbA<sub>1C</sub> of 8.0% and 33% had established microvascular complications of diabetes. Baseline renal function was normal or mildly impaired (mean eGFR 81 mL/min/1.73 m<sup>2</sup>).

The types and frequency of common adverse reactions observed in the pool of eight clinical trials were consistent with those listed in Table 1. Percentages were weighted by studies. Study weights were proportional to the harmonic mean of the three treatment sample sizes. In this pool, INVOKANA was also associated with the adverse reactions of fatigue (1.8% with comparator, 2.2% with INVOKANA 100 mg, and 2.0% with INVOKANA 300 mg) and loss of strength or energy (i.e., asthenia) (0.6% with comparator, 0.7% with INVOKANA 100 mg, and 1.1% with INVOKANA 300 mg).

In the pool of eight clinical trials, the incidence rate of pancreatitis (acute or chronic) was 0.1%, 0.2%, and 0.1% receiving comparator, INVOKANA 100 mg, and INVOKANA 300 mg, respectively.

In the pool of eight clinical trials, hypersensitivity-related adverse reactions (including erythema, rash, pruritus, urticaria, and angioedema) occurred in 3.0%, 3.8%, and 4.2% of patients receiving comparator, INVOKANA 100 mg, and INVOKANA 300 mg, respectively. Five patients experienced serious adverse reactions of hypersensitivity with INVOKANA, which included 4 patients with urticaria and 1 patient with a diffuse rash and urticaria occurring within hours of exposure to INVOKANA. Among these patients, 2 patients discontinued INVOKANA. One patient with urticaria had recurrence when INVOKANA was re-initiated.

Photosensitivity-related adverse reactions (including photosensitivity reaction, polymorphic light eruption, and sunburn) occurred in 0.1%, 0.2%, and 0.2% of patients receiving comparator, INVOKANA 100 mg, and INVOKANA 300 mg, respectively.

Other adverse reactions occurring more frequently on INVOKANA than on comparator were:

### Lower Limb Amputation

An approximately 2-fold increased risk of lower limb amputations associated with INVOKANA use was observed in CANVAS and CANVAS-R, two large, randomized, placebo-controlled trials evaluating patients with type 2 diabetes who had either established cardiovascular disease or were at risk for cardiovascular disease. Patients in CANVAS and CANVAS-R were followed for an average of 5.7 and 2.1 years, respectively. The amputation data for CANVAS and CANVAS-R are shown in Tables 2 and 3, respectively [*see Warnings and Precautions (5.1)*].

**Table 2: CANVAS Amputations**

	<b>Placebo N=1441</b>	<b>INVOKANA 100 mg N=1445</b>	<b>INVOKANA 300 mg N=1441</b>	<b>INVOKANA (Pooled) N=2886</b>
Patients with an amputation, n (%)	22 (1.5)	50 (3.5)	45 (3.1)	95 (3.3)
Total amputations	33	83	79	162
Amputation incidence rate (per 1000 patient-years)	2.8	6.2	5.5	5.9
Hazard Ratio (95% CI)	--	2.24 (1.36, 3.69)	2.01 (1.20, 3.34)	2.12 (1.34, 3.38)

Note: Incidence is based on the number of patients with at least one amputation, and not the total number of amputation events. A patient's follow-up is calculated from Day 1 to the first amputation event date. Some patients had more than one amputation.

**Table 3: CANVAS-R Amputations**

	<b>Placebo N=2903</b>	<b>INVOKANA 100 mg (with up-titration to 300 mg) N=2904</b>
Patients with an amputation, n (%)	25 (0.9)	45 (1.5)
Total amputations	36	59



Amputation incidence rate (per 1000 patient-years)	4.2	7.5
Hazard Ratio (95% CI)	--	1.80 (1.10, 2.93)

Note: Incidence is based on the number of patients with at least one amputation, and not the total number of amputation events. A patient's follow-up is calculated from Day 1 to the first amputation event date. Some patients had more than one amputation.

### Volume Depletion-Related Adverse Reactions

INVOKANA results in an osmotic diuresis, which may lead to reductions in intravascular volume. In clinical studies, treatment with INVOKANA was associated with a dose-dependent increase in the incidence of volume depletion-related adverse reactions (e.g., hypotension, postural dizziness, orthostatic hypotension, syncope, and dehydration). An increased incidence was observed in patients on the 300 mg dose. The three factors associated with the largest increase in volume depletion-related adverse reactions were the use of loop diuretics, moderate renal impairment (eGFR 30 to less than 60 mL/min/1.73 m<sup>2</sup>), and age 75 years and older (Table 4) [see *Dosage and Administration* (2.2), *Warnings and Precautions* (5.2), and *Use in Specific Populations* (8.5 and 8.6)].

**Table 4: Proportion of Patients With at Least One Volume Depletion-Related Adverse Reaction (Pooled Results from 8 Clinical Trials)**

Baseline Characteristic	Comparator Group*	INVOKANA 100 mg	INVOKANA 300 mg
	%	%	%
Overall population	1.5%	2.3%	3.4%
75 years of age and older <sup>†</sup>	2.6%	4.9%	8.7%
eGFR less than 60 mL/min/1.73 m <sup>2†</sup>	2.5%	4.7%	8.1%
Use of loop diuretic <sup>†</sup>	4.7%	3.2%	8.8%

\* Includes placebo and active-comparator groups

<sup>†</sup> Patients could have more than 1 of the listed risk factors

### Falls

In a pool of nine clinical trials with mean duration of exposure to INVOKANA of 85 weeks, the proportion of patients who experienced falls was 1.3%, 1.5%, and 2.1% with comparator, INVOKANA 100 mg, and INVOKANA 300 mg, respectively. The higher risk of falls for patients treated with INVOKANA was observed within the first few weeks of treatment.

### Impairment in Renal Function

INVOKANA is associated with a dose-dependent increase in serum creatinine and a concomitant fall in estimated GFR (Table 5). Patients with moderate renal impairment at baseline had larger mean changes.

**Table 5: Changes in Serum Creatinine and eGFR Associated with INVOKANA in the Pool of Four Placebo-Controlled Trials and Moderate Renal Impairment Trial**

			Placebo N=646	INVOKANA 100 mg N=833	INVOKANA 300 mg N=834
Pool of Four Placebo- Controlled Trials	Baseline	Creatinine (mg/dL)	0.84	0.82	0.82
		eGFR (mL/min/1.73 m <sup>2</sup> )	87.0	88.3	88.8
	Week 6 Change	Creatinine (mg/dL)	0.01	0.03	0.05
		eGFR (mL/min/1.73 m <sup>2</sup> )	-1.6	-3.8	-5.0
	End of Treatment Change*	Creatinine (mg/dL)	0.01	0.02	0.03
		eGFR (mL/min/1.73 m <sup>2</sup> )	-1.6	-2.3	-3.4
			Placebo N=90	INVOKANA 100 mg N=90	INVOKANA 300 mg N=89
Moderate Renal Impairment Trial	Baseline	Creatinine (mg/dL)	1.61	1.62	1.63
		eGFR (mL/min/1.73 m <sup>2</sup> )	40.1	39.7	38.5
	Week 3 Change	Creatinine (mg/dL)	0.03	0.18	0.28
		eGFR (mL/min/1.73 m <sup>2</sup> )	-0.7	-4.6	-6.2
	End of Treatment Change*	Creatinine (mg/dL)	0.07	0.16	0.18
		eGFR (mL/min/1.73 m <sup>2</sup> )	-1.5	-3.6	-4.0

\* Week 26 in mITT LOCF population

In the pool of four placebo-controlled trials where patients had normal or mildly impaired baseline renal function, the proportion of patients who experienced at least one event of significant renal function decline, defined as an eGFR below 80 mL/min/1.73 m<sup>2</sup> and 30% lower than baseline, was 2.1% with placebo, 2.0% with INVOKANA 100 mg, and 4.1% with INVOKANA 300 mg. At the end of treatment, 0.5% with placebo, 0.7% with INVOKANA 100 mg, and 1.4% with INVOKANA 300 mg had a significant renal function decline.

In a trial carried out in patients with moderate renal impairment with a baseline eGFR of 30 to less than 50 mL/min/1.73 m<sup>2</sup> (mean baseline eGFR 39 mL/min/1.73 m<sup>2</sup>) [see *Clinical Studies (14.3)*], the proportion of patients who experienced at least one event of significant renal function decline, defined as an eGFR 30% lower than baseline, was 6.9% with placebo, 18% with INVOKANA 100 mg, and 22.5% with INVOKANA 300 mg. At the end of treatment, 4.6% with placebo, 3.4% with INVOKANA 100 mg, and 2.2% with INVOKANA 300 mg had a significant renal function decline.

In a pooled population of patients with moderate renal impairment (N=1085) with baseline eGFR of 30 to less than 60 mL/min/1.73 m<sup>2</sup> (mean baseline eGFR 48 mL/min/1.73 m<sup>2</sup>), the overall incidence of these events was lower than in the dedicated trial but a dose-dependent increase in incident episodes of significant renal function decline compared to placebo was still observed.

Use of INVOKANA has been associated with an increased incidence of renal-related adverse reactions (e.g., increased blood creatinine, decreased glomerular filtration rate, renal impairment, and acute renal failure), particularly in patients with moderate renal impairment.

In the pooled analysis of patients with moderate renal impairment, the incidence of renal-related adverse reactions was 3.7% with placebo, 8.9% with INVOKANA 100 mg, and 9.3% with INVOKANA 300 mg. Discontinuations

due to renal-related adverse events occurred in 1.0% with placebo, 1.2% with INVOKANA 100 mg, and 1.6% with INVOKANA 300 mg [see *Warnings and Precautions (5.4)*].

### Genital Mycotic Infections

In the pool of four placebo-controlled clinical trials, female genital mycotic infections (e.g., vulvovaginal mycotic infection, vulvovaginal candidiasis, and vulvovaginitis) occurred in 2.8%, 10.6%, and 11.6% of females treated with placebo, INVOKANA 100 mg, and INVOKANA 300 mg, respectively. Patients with a history of genital mycotic infections were more likely to develop genital mycotic infections on INVOKANA. Female patients who developed genital mycotic infections on INVOKANA were more likely to experience recurrence and require treatment with oral or topical antifungal agents and anti-microbial agents. In females, discontinuation due to genital mycotic infections occurred in 0% and 0.7% of patients treated with placebo and INVOKANA, respectively [see *Warnings and Precautions (5.8)*].

In the pool of four placebo-controlled clinical trials, male genital mycotic infections (e.g., candidal balanitis, balanoposthitis) occurred in 0.7%, 4.2%, and 3.8% of males treated with placebo, INVOKANA 100 mg, and INVOKANA 300 mg, respectively. Male genital mycotic infections occurred more commonly in uncircumcised males and in males with a prior history of balanitis or balanoposthitis. Male patients who developed genital mycotic infections on INVOKANA were more likely to experience recurrent infections (22% on INVOKANA versus none on placebo), and require treatment with oral or topical antifungal agents and anti-microbial agents than patients on comparators. In males, discontinuations due to genital mycotic infections occurred in 0% and 0.5% of patients treated with placebo and INVOKANA, respectively. In the pooled analysis of 8 controlled trials, phimosis was reported in 0.3% of uncircumcised male patients treated with INVOKANA and 0.2% required circumcision to treat the phimosis [see *Warnings and Precautions (5.8)*].

### Hypoglycemia

In all clinical trials, hypoglycemia was defined as any event regardless of symptoms, where biochemical hypoglycemia was documented (any glucose value below or equal to 70 mg/dL). Severe hypoglycemia was defined as an event consistent with hypoglycemia where the patient required the assistance of another person to recover, lost consciousness, or experienced a seizure (regardless of whether biochemical documentation of a low glucose value was obtained). In individual clinical trials [see *Clinical Studies (14)*], episodes of hypoglycemia occurred at a higher rate when INVOKANA was co-administered with insulin or sulfonylureas (Table 6) [see *Warnings and Precautions (5.7)*].

**Table 6: Incidence of Hypoglycemia\* in Controlled Clinical Studies**

<b>Monotherapy (26 weeks)</b>	<b>Placebo (N=192)</b>	<b>INVOKANA 100 mg (N=195)</b>	<b>INVOKANA 300 mg (N=197)</b>
Overall [N (%)]	5 (2.6)	7 (3.6)	6 (3.0)
<b>In Combination with Metformin (26 weeks)</b>	<b>Placebo + Metformin (N=183)</b>	<b>INVOKANA 100 mg + Metformin (N=368)</b>	<b>INVOKANA 300 mg + Metformin (N=367)</b>
Overall [N (%)]	3 (1.6)	16 (4.3)	17 (4.6)
Severe [N (%)] <sup>†</sup>	0 (0)	1 (0.3)	1 (0.3)

<b>In Combination with Metformin (52 weeks)</b>	<b>Glimepiride + Metformin (N=482)</b>	<b>INVOKANA 100 mg + Metformin (N=483)</b>	<b>INVOKANA 300 mg + Metformin (N=485)</b>
Overall [N (%)]	165 (34.2)	27 (5.6)	24 (4.9)
Severe [N (%)] <sup>†</sup>	15 (3.1)	2 (0.4)	3 (0.6)
<b>In Combination with Sulfonylurea (18 weeks)</b>	<b>Placebo + Sulfonylurea (N=69)</b>	<b>INVOKANA 100 mg + Sulfonylurea (N=74)</b>	<b>INVOKANA 300 mg + Sulfonylurea (N=72)</b>
Overall [N (%)]	4 (5.8)	3 (4.1)	9 (12.5)
<b>In Combination with Metformin + Sulfonylurea (26 weeks)</b>	<b>Placebo + Metformin + Sulfonylurea (N=156)</b>	<b>INVOKANA 100 mg + Metformin + Sulfonylurea (N=157)</b>	<b>INVOKANA 300 mg + Metformin + Sulfonylurea (N=156)</b>
Overall [N (%)]	24 (15.4)	43 (27.4)	47 (30.1)
Severe [N (%)] <sup>†</sup>	1 (0.6)	1 (0.6)	0
<b>In Combination with Metformin + Sulfonylurea (52 weeks)</b>	<b>Sitagliptin + Metformin + Sulfonylurea (N=378)</b>		<b>INVOKANA 300 mg + Metformin + Sulfonylurea (N=377)</b>
Overall [N (%)]	154 (40.7)		163 (43.2)
Severe [N (%)] <sup>†</sup>	13 (3.4)		15 (4.0)
<b>In Combination with Metformin + Pioglitazone (26 weeks)</b>	<b>Placebo + Metformin + Pioglitazone (N=115)</b>	<b>INVOKANA 100 mg + Metformin + Pioglitazone (N=113)</b>	<b>INVOKANA 300 mg + Metformin + Pioglitazone (N=114)</b>
Overall [N (%)]	3 (2.6)	3 (2.7)	6 (5.3)
<b>In Combination with Insulin (18 weeks)</b>	<b>Placebo (N=565)</b>	<b>INVOKANA 100 mg (N=566)</b>	<b>INVOKANA 300 mg (N=587)</b>
Overall [N (%)]	208 (36.8)	279 (49.3)	285 (48.6)
Severe [N (%)] <sup>†</sup>	14 (2.5)	10 (1.8)	16 (2.7)

\* Number of patients experiencing at least one event of hypoglycemia based on either biochemically documented episodes or severe hypoglycemic events in the intent-to-treat population

<sup>†</sup> Severe episodes of hypoglycemia were defined as those where the patient required the assistance of another person to recover, lost consciousness, or experienced a seizure (regardless of whether biochemical documentation of a low glucose value was obtained)

## Bone Fracture

The occurrence of bone fractures was evaluated in a pool of nine clinical trials with a mean duration of exposure to INVOKANA of 85 weeks. The incidence rates of adjudicated bone fractures were 1.1, 1.4, and 1.5 per 100 patient-years of exposure in the comparator, INVOKANA 100 mg, and INVOKANA 300 mg groups, respectively. Fractures were observed as early as 12 weeks after treatment initiation and were more likely to be low trauma (e.g., fall from no more than standing height), and affect the upper extremities [see *Warnings and Precautions (5.10)*].

## Laboratory and Imaging Tests

### *Increases in Serum Potassium*

In a pooled population of patients (N=723) with moderate renal impairment (eGFR 45 to less than 60 mL/min/1.73 m<sup>2</sup>), increases in serum potassium to greater than 5.4 mEq/L and 15% above baseline occurred in 5.3%, 5.0%, and 8.8% of patients treated with placebo, INVOKANA 100 mg, and INVOKANA 300 mg, respectively. Severe elevations (greater than or equal to 6.5 mEq/L) occurred in 0.4% of patients treated with placebo, no patients treated with INVOKANA 100 mg, and 1.3% of patients treated with INVOKANA 300 mg.

In these patients, increases in potassium were more commonly seen in those with elevated potassium at baseline. Among patients with moderate renal impairment, approximately 84% were taking medications that interfere with potassium excretion, such as potassium-sparing diuretics, angiotensin-converting-enzyme inhibitors, and angiotensin-receptor blockers [see *Warnings and Precautions (5.4 and 5.5) and Use in Specific Populations (8.6)*].

#### *Increases in Serum Magnesium*

Dose-related increases in serum magnesium were observed early after initiation of INVOKANA (within 6 weeks) and remained elevated throughout treatment. In the pool of four placebo-controlled trials, the mean percent change in serum magnesium levels was 8.1% and 9.3% with INVOKANA 100 mg and INVOKANA 300 mg, respectively, compared to -0.6% with placebo. In a trial of patients with moderate renal impairment [see *Clinical Studies (14.3)*], serum magnesium levels increased by 0.2%, 9.2%, and 14.8% with placebo, INVOKANA 100 mg, and INVOKANA 300 mg, respectively.

#### *Increases in Serum Phosphate*

Dose-related increases in serum phosphate levels were observed with INVOKANA. In the pool of four placebo controlled trials, the mean percent change in serum phosphate levels were 3.6% and 5.1% with INVOKANA 100 mg and INVOKANA 300 mg, respectively, compared to 1.5% with placebo. In a trial of patients with moderate renal impairment [see *Clinical Studies (14.3)*], the mean serum phosphate levels increased by 1.2%, 5.0%, and 9.3% with placebo, INVOKANA 100 mg, and INVOKANA 300 mg, respectively.

#### *Increases in Low-Density Lipoprotein Cholesterol (LDL-C) and non-High-Density Lipoprotein Cholesterol (non-HDL-C)*

In the pool of four placebo-controlled trials, dose-related increases in LDL-C with INVOKANA were observed. Mean changes (percent changes) from baseline in LDL-C relative to placebo were 4.4 mg/dL (4.5%) and 8.2 mg/dL (8.0%) with INVOKANA 100 mg and INVOKANA 300 mg, respectively. The mean baseline LDL-C levels were 104 to 110 mg/dL across treatment groups [see *Warnings and Precautions (5.11)*].

Dose-related increases in non-HDL-C with INVOKANA were observed. Mean changes (percent changes) from baseline in non-HDL-C relative to placebo were 2.1 mg/dL (1.5%) and 5.1 mg/dL (3.6%) with INVOKANA 100 mg and 300 mg, respectively. The mean baseline non-HDL-C levels were 140 to 147 mg/dL across treatment groups.

#### *Increases in Hemoglobin*

In the pool of four placebo-controlled trials, mean changes (percent changes) from baseline in hemoglobin were -0.18 g/dL (-1.1%) with placebo, 0.47 g/dL (3.5%) with INVOKANA 100 mg, and 0.51 g/dL (3.8%) with INVOKANA 300 mg. The mean baseline hemoglobin value was approximately 14.1 g/dL across treatment groups. At the end of treatment, 0.8%, 4.0%, and 2.7% of patients treated with placebo, INVOKANA 100 mg, and INVOKANA 300 mg, respectively, had hemoglobin above the upper limit of normal.

### *Decreases in Bone Mineral Density*

Bone mineral density (BMD) was measured by dual-energy X-ray absorptiometry in a clinical trial of 714 older adults (mean age 64 years) [see *Clinical Studies (14.3)*]. At 2 years, patients randomized to INVOKANA 100 mg and INVOKANA 300 mg had placebo-corrected declines in BMD at the total hip of 0.9% and 1.2%, respectively, and at the lumbar spine of 0.3% and 0.7%, respectively. Additionally, placebo-adjusted BMD declines were 0.1% at the femoral neck for both INVOKANA doses and 0.4% at the distal forearm for patients randomized to INVOKANA 300 mg. The placebo-adjusted change at the distal forearm for patients randomized to INVOKANA 100 mg was 0%.

## **6.2 Postmarketing Experience**

Additional adverse reactions have been identified during postapproval use of INVOKANA. Because these reactions are reported voluntarily from a population of uncertain size, it is generally not possible to reliably estimate their frequency or establish a causal relationship to drug exposure.

Ketoacidosis [see *Warnings and Precautions (5.3)*]

Acute Kidney Injury and Impairment in Renal Function [see *Warnings and Precautions (5.4)*]

Anaphylaxis, Angioedema [see *Warnings and Precautions (5.9)*]

Urosepsis and Pyelonephritis [see *Warnings and Precautions (5.6)*]

## **7 DRUG INTERACTIONS**

### **7.1 UGT Enzyme Inducers**

Rifampin: Co-administration of canagliflozin with rifampin, a nonselective inducer of several UGT enzymes, including UGT1A9, UGT2B4, decreased canagliflozin area under the curve (AUC) by 51%. This decrease in exposure to canagliflozin may decrease efficacy. If an inducer of these UGTs (e.g., rifampin, phenytoin, phenobarbital, ritonavir) must be co-administered with INVOKANA (canagliflozin), consider increasing the dose to 300 mg once daily if patients are currently tolerating INVOKANA 100 mg once daily, have an eGFR greater than 60 mL/min/1.73 m<sup>2</sup>, and require additional glycemic control. Consider other antihyperglycemic therapy in patients with an eGFR of 45 to less than 60 mL/min/1.73 m<sup>2</sup> receiving concurrent therapy with a UGT inducer and require additional glycemic control [see *Dosage and Administration (2.3)* and *Clinical Pharmacology (12.3)*].

### **7.2 Digoxin**

There was an increase in the AUC and mean peak drug concentration (C<sub>max</sub>) of digoxin (20% and 36%, respectively) when co-administered with INVOKANA 300 mg [see *Clinical Pharmacology (12.3)*]. Patients taking INVOKANA with concomitant digoxin should be monitored appropriately.

### 7.3 Positive Urine Glucose Test

Monitoring glycemic control with urine glucose tests is not recommended in patients taking SGLT2 inhibitors as SGLT2 inhibitors increase urinary glucose excretion and will lead to positive urine glucose tests. Use alternative methods to monitor glycemic control.

### 7.4 Interference with 1,5-anhydroglucitol (1,5-AG) Assay

Monitoring glycemic control with 1,5-AG assay is not recommended as measurements of 1,5-AG are unreliable in assessing glycemic control in patients taking SGLT2 inhibitors. Use alternative methods to monitor glycemic control.

## 8 USE IN SPECIFIC POPULATIONS

### 8.1 Pregnancy

#### Risk Summary

Based on animal data showing adverse renal effects, INVOKANA is not recommended during the second and third trimesters of pregnancy.

Limited data with INVOKANA in pregnant women are not sufficient to determine a drug-associated risk for major birth defects or miscarriage. There are risks to the mother and fetus associated with poorly controlled diabetes in pregnancy [*see Clinical Considerations*].

In animal studies, adverse renal pelvic and tubule dilatations that were not reversible were observed in rats when canagliflozin was administered during a period of renal development corresponding to the late second and third trimesters of human pregnancy, at an exposure 0.5-times the 300 mg clinical dose, based on AUC.

The estimated background risk of major birth defects is 6-10% in women with pre-gestational diabetes with a HbA<sub>1C</sub> >7 and has been reported to be as high as 20-25% in women with a HbA<sub>1C</sub> >10. The estimated background risk of miscarriage for the indicated population is unknown. In the U.S. general population, the estimated background risk of major birth defects and miscarriage in clinically recognized pregnancies is 2-4% and 15-20%, respectively.

#### Clinical Considerations

##### *Disease-associated maternal and/or embryo/fetal risk*

Poorly controlled diabetes in pregnancy increases the maternal risk for diabetic ketoacidosis, pre-eclampsia, spontaneous abortions, preterm delivery, stillbirth and delivery complications. Poorly controlled diabetes increases the fetal risk for major birth defects, stillbirth, and macrosomia related morbidity.

##### *Animal Data*

Canagliflozin dosed directly to juvenile rats from postnatal day (PND) 21 until PND 90 at doses of 4, 20, 65, or 100 mg/kg increased kidney weights and dose dependently increased the incidence and severity of renal pelvic and tubular dilatation at all doses tested. Exposure at the lowest dose was greater than or equal to 0.5-times the 300 mg clinical dose, based on AUC. These outcomes occurred with drug exposure during periods of renal

development in rats that correspond to the late second and third trimester of human renal development. The renal pelvic dilatations observed in juvenile animals did not fully reverse within a 1 month recovery period.

In embryo-fetal development studies in rats and rabbits, canagliflozin was administered for intervals coinciding with the first trimester period of organogenesis in humans. No developmental toxicities independent of maternal toxicity were observed when canagliflozin was administered at doses up to 100 mg/kg in pregnant rats and 160 mg/kg in pregnant rabbits during embryonic organogenesis or during a study in which maternal rats were dosed from gestation day (GD) 6 through PND 21, yielding exposures up to approximately 19-times the 300 mg clinical dose, based on AUC.

## 8.2 Lactation

### Risk Summary

There is no information regarding the presence of INVOKANA in human milk, the effects on the breastfed infant, or the effects on milk production. Canagliflozin is present in the milk of lactating rats [*see Data*]. Since human kidney maturation occurs *in utero* and during the first 2 years of life when lactational exposure may occur, there may be risk to the developing human kidney.

Because of the potential for serious adverse reactions in a breastfed infant, advise women that use of INVOKANA is not recommended while breastfeeding.

### Data

#### *Animal Data*

Radiolabeled canagliflozin administered to lactating rats on day 13 post-partum was present at a milk/plasma ratio of 1.40, indicating that canagliflozin and its metabolites are transferred into milk at a concentration comparable to that in plasma. Juvenile rats directly exposed to canagliflozin showed a risk to the developing kidney (renal pelvic and tubular dilatations) during maturation.

## 8.4 Pediatric Use

Safety and effectiveness of INVOKANA in pediatric patients under 18 years of age have not been established.

## 8.5 Geriatric Use

Two thousand thirty-four (2034) patients 65 years and older, and 345 patients 75 years and older were exposed to INVOKANA in nine clinical studies of INVOKANA [*see Clinical Studies (14.3)*].

Patients 65 years and older had a higher incidence of adverse reactions related to reduced intravascular volume with INVOKANA (such as hypotension, postural dizziness, orthostatic hypotension, syncope, and dehydration), particularly with the 300 mg daily dose, compared to younger patients; a more prominent increase in the incidence was seen in patients who were 75 years and older [*see Dosage and Administration (2.1) and Adverse Reactions (6.1)*]. Smaller reductions in HbA<sub>1C</sub> with INVOKANA relative to placebo were seen in older (65 years and older; -0.61% with INVOKANA 100 mg and -0.74% with INVOKANA 300 mg relative to placebo) compared to younger patients (-0.72% with INVOKANA 100 mg and -0.87% with INVOKANA 300 mg relative to placebo).



## 8.6 Renal Impairment

The efficacy and safety of INVOKANA were evaluated in a study that included patients with moderate renal impairment (eGFR 30 to less than 50 mL/min/1.73 m<sup>2</sup>) [see *Clinical Studies (14.3)*]. These patients had less overall glycemic efficacy and had a higher occurrence of adverse reactions related to reduced intravascular volume, renal-related adverse reactions, and decreases in eGFR compared to patients with mild renal impairment or normal renal function (eGFR greater than or equal to 60 mL/min/1.73 m<sup>2</sup>). Dose-related, transient mean increases in serum potassium were observed early after initiation of INVOKANA (i.e., within 3 weeks) in this trial. Increases in serum potassium of greater than 5.4 mEq/L and 15% above baseline occurred in 16.1%, 12.4%, and 27.0% of patients treated with placebo, INVOKANA 100 mg, and INVOKANA 300 mg, respectively. Severe elevations (greater than or equal to 6.5 mEq/L) occurred in 1.1%, 2.2%, and 2.2% of patients treated with placebo, INVOKANA 100 mg, and INVOKANA 300 mg, respectively [see *Dosage and Administration (2.2)*, *Warnings and Precautions (5.2, 5.4, and 5.5)*, and *Adverse Reactions (6.1)*].

The efficacy and safety of INVOKANA have not been established in patients with severe renal impairment (eGFR less than 30 mL/min/1.73 m<sup>2</sup>), with ESRD, or receiving dialysis. INVOKANA is not expected to be effective in these patient populations [see *Contraindications (4)* and *Clinical Pharmacology (12.3)*].

## 8.7 Hepatic Impairment

No dosage adjustment is necessary in patients with mild or moderate hepatic impairment. The use of INVOKANA has not been studied in patients with severe hepatic impairment and is therefore not recommended [see *Clinical Pharmacology (12.3)*].

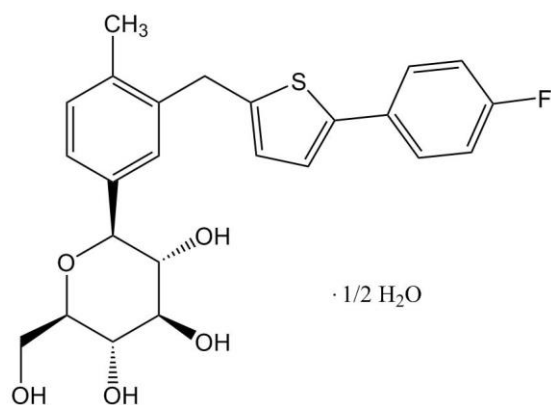
## 10 OVERDOSAGE

There were no reports of overdose during the clinical development program of INVOKANA (canagliflozin).

In the event of an overdose, contact the Poison Control Center. It is also reasonable to employ the usual supportive measures, e.g., remove unabsorbed material from the gastrointestinal tract, employ clinical monitoring, and institute supportive treatment as dictated by the patient's clinical status. Canagliflozin was negligibly removed during a 4-hour hemodialysis session. Canagliflozin is not expected to be dialyzable by peritoneal dialysis.

## 11 DESCRIPTION

INVOKANA (canagliflozin) contains canagliflozin, an inhibitor of sodium-glucose co-transporter 2 (SGLT2), the transporter responsible for reabsorbing the majority of glucose filtered by the kidney. Canagliflozin, the active ingredient of INVOKANA, is chemically known as (1S)-1,5-anhydro-1-[3-[[5-(4-fluorophenyl)-2-thienyl]methyl]-4-methylphenyl]-D-glucitol hemihydrate and its molecular formula and weight are C<sub>24</sub>H<sub>25</sub>FO<sub>5</sub>S•1/2 H<sub>2</sub>O and 453.53, respectively. The structural formula for canagliflozin is:



Canagliflozin is practically insoluble in aqueous media from pH 1.1 to 12.9.

INVOKANA is supplied as film-coated tablets for oral administration, containing 102 and 306 mg of canagliflozin in each tablet strength, corresponding to 100 mg and 300 mg of canagliflozin (anhydrous), respectively.

Inactive ingredients of the core tablet are croscarmellose sodium, hydroxypropyl cellulose, lactose anhydrous, magnesium stearate, and microcrystalline cellulose. The magnesium stearate is vegetable-sourced. The tablets are finished with a commercially available film-coating consisting of the following excipients: polyvinyl alcohol (partially hydrolyzed), titanium dioxide, macrogol/PEG, talc, and iron oxide yellow (100 mg tablet only).

## 12 CLINICAL PHARMACOLOGY

### 12.1 Mechanism of Action

Sodium-glucose co-transporter 2 (SGLT2), expressed in the proximal renal tubules, is responsible for the majority of the reabsorption of filtered glucose from the tubular lumen. Canagliflozin is an inhibitor of SGLT2. By inhibiting SGLT2, canagliflozin reduces reabsorption of filtered glucose and lowers the renal threshold for glucose ( $RT_G$ ), and thereby increases urinary glucose excretion (UGE).

### 12.2 Pharmacodynamics

Following single and multiple oral doses of canagliflozin in patients with type 2 diabetes, dose-dependent decreases in the renal threshold for glucose ( $RT_G$ ) and increases in urinary glucose excretion were observed. From a starting  $RT_G$  value of approximately 240 mg/dL, canagliflozin at 100 mg and 300 mg once daily suppressed  $RT_G$  throughout the 24-hour period. Maximal suppression of mean  $RT_G$  over the 24-hour period was seen with the 300 mg daily dose to approximately 70 to 90 mg/dL in patients with type 2 diabetes in Phase 1 studies. The reductions in  $RT_G$  led to increases in mean UGE of approximately 100 g/day in subjects with type 2 diabetes treated with either 100 mg or 300 mg of canagliflozin. In patients with type 2 diabetes given 100 mg to 300 mg once daily over a 16-day dosing period, reductions in  $RT_G$  and increases in urinary glucose excretion were observed over the dosing period. In this study, plasma glucose declined in a dose-dependent fashion within the first day of dosing. In single-dose studies in healthy and type 2 diabetic subjects, treatment with canagliflozin 300 mg before a mixed-meal delayed intestinal glucose absorption and reduced postprandial glucose.

## Cardiac Electrophysiology

In a randomized, double-blind, placebo-controlled, active-comparator, 4-way crossover study, 60 healthy subjects were administered a single oral dose of canagliflozin 300 mg, canagliflozin 1,200 mg (4 times the maximum recommended dose), moxifloxacin, and placebo. No meaningful changes in QTc interval were observed with either the recommended dose of 300 mg or the 1,200 mg dose.

## **12.3 Pharmacokinetics**

The pharmacokinetics of canagliflozin is similar in healthy subjects and patients with type 2 diabetes. Following single-dose oral administration of 100 mg and 300 mg of INVOKANA, peak plasma concentrations (median  $T_{max}$ ) of canagliflozin occurs within 1 to 2 hours post-dose. Plasma  $C_{max}$  and AUC of canagliflozin increased in a dose-proportional manner from 50 mg to 300 mg. The apparent terminal half-life ( $t_{1/2}$ ) was 10.6 hours and 13.1 hours for the 100 mg and 300 mg doses, respectively. Steady-state was reached after 4 to 5 days of once-daily dosing with canagliflozin 100 mg to 300 mg. Canagliflozin does not exhibit time-dependent pharmacokinetics and accumulated in plasma up to 36% following multiple doses of 100 mg and 300 mg.

## Absorption

The mean absolute oral bioavailability of canagliflozin is approximately 65%. Co-administration of a high-fat meal with canagliflozin had no effect on the pharmacokinetics of canagliflozin; therefore, INVOKANA may be taken with or without food. However, based on the potential to reduce postprandial plasma glucose excursions due to delayed intestinal glucose absorption, it is recommended that INVOKANA be taken before the first meal of the day [see *Dosage and Administration (2.1)*].

## Distribution

The mean steady-state volume of distribution of canagliflozin following a single intravenous infusion in healthy subjects was 83.5 L, suggesting extensive tissue distribution. Canagliflozin is extensively bound to proteins in plasma (99%), mainly to albumin. Protein binding is independent of canagliflozin plasma concentrations. Plasma protein binding is not meaningfully altered in patients with renal or hepatic impairment.

## Metabolism

*O*-glucuronidation is the major metabolic elimination pathway for canagliflozin, which is mainly glucuronidated by UGT1A9 and UGT2B4 to two inactive *O*-glucuronide metabolites.

CYP3A4-mediated (oxidative) metabolism of canagliflozin is minimal (approximately 7%) in humans.

## Excretion

Following administration of a single oral [ $^{14}$ C] canagliflozin dose to healthy subjects, 41.5%, 7.0%, and 3.2% of the administered radioactive dose was recovered in feces as canagliflozin, a hydroxylated metabolite, and an *O*-glucuronide metabolite, respectively. Enterohepatic circulation of canagliflozin was negligible.

Approximately 33% of the administered radioactive dose was excreted in urine, mainly as *O*-glucuronide metabolites (30.5%). Less than 1% of the dose was excreted as unchanged canagliflozin in urine. Renal clearance of canagliflozin 100 mg and 300 mg doses ranged from 1.30 to 1.55 mL/min.

Mean systemic clearance of canagliflozin was approximately 192 mL/min in healthy subjects following intravenous administration.

## Specific Populations

### *Renal Impairment*

A single-dose, open-label study evaluated the pharmacokinetics of canagliflozin 200 mg in subjects with varying degrees of renal impairment (classified using the MDRD-eGFR formula) compared to healthy subjects.

Renal impairment did not affect the  $C_{\max}$  of canagliflozin. Compared to healthy subjects (N=3; eGFR greater than or equal to 90 mL/min/1.73 m<sup>2</sup>), plasma AUC of canagliflozin was increased by approximately 15%, 29%, and 53% in subjects with mild (N=10), moderate (N=9), and severe (N=10) renal impairment, respectively, (eGFR 60 to less than 90, 30 to less than 60 and 15 to less than 30 mL/min/1.73 m<sup>2</sup>, respectively), but was similar for ESRD (N=8) subjects and healthy subjects.

Increases in canagliflozin AUC of this magnitude are not considered clinically relevant. The pharmacodynamic response to canagliflozin declines with increasing severity of renal impairment [*see Contraindications (4) and Warnings and Precautions (5.4)*].

Canagliflozin was negligibly removed by hemodialysis.

### *Hepatic Impairment*

Relative to subjects with normal hepatic function, the geometric mean ratios for  $C_{\max}$  and  $AUC_{\infty}$  of canagliflozin were 107% and 110%, respectively, in subjects with Child-Pugh class A (mild hepatic impairment) and 96% and 111%, respectively, in subjects with Child-Pugh class B (moderate hepatic impairment) following administration of a single 300 mg dose of canagliflozin.

These differences are not considered to be clinically meaningful. There is no clinical experience in patients with Child-Pugh class C (severe) hepatic impairment [*see Use in Specific Populations (8.7)*].

### *Pharmacokinetic Effects of Age, Body Mass Index (BMI)/Weight, Gender and Race*

Based on the population PK analysis with data collected from 1526 subjects, age, body mass index (BMI)/weight, gender, and race do not have a clinically meaningful effect on the pharmacokinetics of canagliflozin [*see Use in Specific Populations (8.5)*].

### *Pediatric*

Studies characterizing the pharmacokinetics of canagliflozin in pediatric patients have not been conducted.

## Drug Interaction Studies

### *In Vitro Assessment of Drug Interactions*

Canagliflozin did not induce CYP450 enzyme expression (3A4, 2C9, 2C19, 2B6, and 1A2) in cultured human hepatocytes. Canagliflozin did not inhibit the CYP450 isoenzymes (1A2, 2A6, 2C19, 2D6, or 2E1) and weakly inhibited CYP2B6, CYP2C8, CYP2C9, and CYP3A4 based on *in vitro* studies with human hepatic microsomes. Canagliflozin is a weak inhibitor of P-gp.

Canagliflozin is also a substrate of drug transporters P-glycoprotein (P-gp) and MRP2.

### In Vivo Assessment of Drug Interactions

**Table 7: Effect of Co-Administered Drugs on Systemic Exposures of Canagliflozin**

Co-Administered Drug	Dose of Co-Administered Drug*	Dose of Canagliflozin*	Geometric Mean Ratio (Ratio With/Without Co-Administered Drug) No Effect=1.0	
			AUC <sup>†</sup> (90% CI)	C <sub>max</sub> (90% CI)
<b>See Drug Interactions (7.1) for the clinical relevance of the following:</b>				
Rifampin	600 mg QD for 8 days	300 mg	0.49 (0.44; 0.54)	0.72 (0.61; 0.84)
<b>No dose adjustments of INVOKANA required for the following:</b>				
Cyclosporine	400 mg	300 mg QD for 8 days	1.23 (1.19; 1.27)	1.01 (0.91; 1.11)
Ethinyl estradiol and levonorgestrel	0.03 mg ethinyl estradiol and 0.15 mg levonorgestrel	200 mg QD for 6 days	0.91 (0.88; 0.94)	0.92 (0.84; 0.99)
Hydrochlorothiazide	25 mg QD for 35 days	300 mg QD for 7 days	1.12 (1.08; 1.17)	1.15 (1.06; 1.25)
Metformin	2,000 mg	300 mg QD for 8 days	1.10 (1.05; 1.15)	1.05 (0.96; 1.16)
Probenecid	500 mg BID for 3 days	300 mg QD for 17 days	1.21 (1.16; 1.25)	1.13 (1.00; 1.28)

\* Single dose unless otherwise noted

† AUC<sub>inf</sub> for drugs given as a single dose and AUC<sub>24h</sub> for drugs given as multiple doses

QD = once daily; BID = twice daily

**Table 8: Effect of Canagliflozin on Systemic Exposure of Co-Administered Drugs**

Co-Administered Drug	Dose of Co-Administered Drug*	Dose of Canagliflozin*	Geometric Mean Ratio (Ratio With/Without Co-Administered Drug) No Effect = 1.0		
				AUC <sup>†</sup> (90% CI)	C <sub>max</sub> (90% CI)
<b>See Drug Interactions (7.2) for the clinical relevance of the following:</b>					
Digoxin	0.5 mg QD first day followed by 0.25 mg QD for 6 days	300 mg QD for 7 days	digoxin	1.20 (1.12; 1.28)	1.36 (1.21; 1.53)
<b>No dose adjustments of co-administered drug required for the following:</b>					
Acetaminophen	1,000 mg	300 mg BID for 25 days	acetaminophen	1.06 <sup>‡</sup> (0.98; 1.14)	1.00 (0.92; 1.09)
Ethinyl estradiol and levonorgestrel	0.03 mg ethinyl estradiol and	200 mg QD for 6 days	ethinyl estradiol	1.07 (0.99; 1.15)	1.22 (1.10; 1.35)

	0.15 mg levonorgestrel		levonorgestrel	1.06 (1.00; 1.13)	1.22 (1.11; 1.35)
Glyburide	1.25 mg	200 mg QD for 6 days	glyburide	1.02 (0.98; 1.07)	0.93 (0.85; 1.01)
			3-cis-hydroxy-glyburide	1.01 (0.96; 1.07)	0.99 (0.91; 1.08)
			4-trans-hydroxy-glyburide	1.03 (0.97; 1.09)	0.96 (0.88; 1.04)
Hydrochlorothiazide	25 mg QD for 35 days	300 mg QD for 7 days	hydrochlorothiazide	0.99 (0.95; 1.04)	0.94 (0.87; 1.01)
Metformin	2,000 mg	300 mg QD for 8 days	metformin	1.20 (1.08; 1.34)	1.06 (0.93; 1.20)
Simvastatin	40 mg	300 mg QD for 7 days	simvastatin	1.12 (0.94; 1.33)	1.09 (0.91; 1.31)
			simvastatin acid	1.18 (1.03; 1.35)	1.26 (1.10; 1.45)
Warfarin	30 mg	300 mg QD for 12 days	(R)-warfarin	1.01 (0.96; 1.06)	1.03 (0.94; 1.13)
			(S)-warfarin	1.06 (1.00; 1.12)	1.01 (0.90; 1.13)
			INR	1.00 (0.98; 1.03)	1.05 (0.99; 1.12)

\* Single dose unless otherwise noted

† AUC<sub>inf</sub> for drugs given as a single dose and AUC<sub>24h</sub> for drugs given as multiple doses

‡ AUC<sub>0-12h</sub>

QD = once daily; BID = twice daily; INR = International Normalized Ratio

## 13 NONCLINICAL TOXICOLOGY

### 13.1 Carcinogenesis, Mutagenesis, Impairment of Fertility

#### Carcinogenesis

Carcinogenicity was evaluated in 2-year studies conducted in CD1 mice and Sprague-Dawley rats. Canagliflozin did not increase the incidence of tumors in mice dosed at 10, 30, or 100 mg/kg (less than or equal to 14 times exposure from a 300 mg clinical dose).

Testicular Leydig cell tumors, considered secondary to increased luteinizing hormone (LH), increased significantly in male rats at all doses tested (10, 30, and 100 mg/kg). In a 12-week clinical study, LH did not increase in males treated with canagliflozin.

Renal tubular adenoma and carcinoma increased significantly in male and female rats dosed at 100 mg/kg, or approximately 12-times exposure from a 300 mg clinical dose. Also, adrenal pheochromocytoma increased significantly in males and numerically in females dosed at 100 mg/kg. Carbohydrate malabsorption associated with high doses of canagliflozin was considered a necessary proximal event in the emergence of renal and adrenal tumors in rats. Clinical studies have not demonstrated carbohydrate malabsorption in humans at canagliflozin doses of up to 2-times the recommended clinical dose of 300 mg.

## Mutagenesis

Canagliflozin was not mutagenic with or without metabolic activation in the Ames assay. Canagliflozin was mutagenic in the *in vitro* mouse lymphoma assay with but not without metabolic activation. Canagliflozin was not mutagenic or clastogenic in an *in vivo* oral micronucleus assay in rats and an *in vivo* oral Comet assay in rats.

## Impairment of Fertility

Canagliflozin had no effects on the ability of rats to mate and sire or maintain a litter up to the high dose of 100 mg/kg (approximately 14 times and 18 times the 300 mg clinical dose in males and females, respectively), although there were minor alterations in a number of reproductive parameters (decreased sperm velocity, increased number of abnormal sperm, slightly fewer corpora lutea, fewer implantation sites, and smaller litter sizes) at the highest dosage administered.

## **14 CLINICAL STUDIES**

INVOKANA (canagliflozin) has been studied as monotherapy, in combination with metformin, sulfonylurea, metformin and sulfonylurea, metformin and sitagliptin, metformin and a thiazolidinedione (i.e., pioglitazone), and in combination with insulin (with or without other antihyperglycemic agents). The efficacy of INVOKANA was compared to a dipeptidyl peptidase-4 (DPP-4) inhibitor (sitagliptin), both as add-on combination therapy with metformin and sulfonylurea, and a sulfonylurea (glimepiride), both as add-on combination therapy with metformin. INVOKANA was also evaluated in adults 55 to 80 years of age and patients with moderate renal impairment.

In patients with type 2 diabetes, treatment with INVOKANA produced clinically and statistically significant improvements in HbA<sub>1C</sub> compared to placebo. Reductions in HbA<sub>1C</sub> were observed across subgroups including age, gender, race, and baseline body mass index (BMI).

### **14.1 Monotherapy**

A total of 584 patients with type 2 diabetes inadequately controlled on diet and exercise participated in a 26-week, double-blind, placebo-controlled study to evaluate the efficacy and safety of INVOKANA. The mean age was 55 years, 44% of patients were men, and the mean baseline eGFR was 87 mL/min/1.73 m<sup>2</sup>. Patients taking other antihyperglycemic agents (N=281) discontinued the agent and underwent an 8-week washout followed by a 2-week, single-blind, placebo run-in period. Patients not taking oral antihyperglycemic agents (N=303) entered the 2-week, single-blind, placebo run-in period directly. After the placebo run-in period, patients were randomized to INVOKANA 100 mg, INVOKANA 300 mg, or placebo, administered once daily for 26 weeks.

At the end of treatment, INVOKANA 100 mg and 300 mg once daily resulted in a statistically significant improvement in HbA<sub>1C</sub> (p<0.001 for both doses) compared to placebo. INVOKANA 100 mg and 300 mg once daily also resulted in a greater proportion of patients achieving an HbA<sub>1C</sub> less than 7%, in significant reduction in fasting plasma glucose (FPG), in improved postprandial glucose (PPG), and in percent body weight reduction compared to placebo (see Table 9). Statistically significant (p<0.001 for both doses) mean changes from baseline in systolic blood pressure relative to placebo were -3.7 mmHg and -5.4 mmHg with INVOKANA 100 mg and 300 mg, respectively.

**Table 9: Results from 26-Week Placebo-Controlled Clinical Study with INVOKANA as Monotherapy\***

<b>Efficacy Parameter</b>	<b>Placebo (N=192)</b>	<b>INVOKANA 100 mg (N=195)</b>	<b>INVOKANA 300 mg (N=197)</b>
<b>HbA<sub>1C</sub> (%)</b>			
Baseline (mean)	7.97	8.06	8.01
Change from baseline (adjusted mean)	0.14	-0.77	-1.03
Difference from placebo (adjusted mean) (95% CI) <sup>†</sup>		-0.91 <sup>‡</sup> (-1.09; -0.73)	-1.16 <sup>‡</sup> (-1.34; -0.99)
<b>Percent of Patients Achieving HbA<sub>1C</sub> &lt; 7%</b>	21	45 <sup>‡</sup>	62 <sup>‡</sup>
<b>Fasting Plasma Glucose (mg/dL)</b>			
Baseline (mean)	166	172	173
Change from baseline (adjusted mean)	8	-27	-35
Difference from placebo (adjusted mean) (95% CI) <sup>†</sup>		-36 <sup>‡</sup> (-42; -29)	-43 <sup>‡</sup> (-50; -37)
<b>2-hour Postprandial Glucose (mg/dL)</b>			
Baseline (mean)	229	250	254
Change from baseline (adjusted mean)	5	-43	-59
Difference from placebo (adjusted mean) (95% CI) <sup>†</sup>		-48 <sup>‡</sup> (-59.1; -37.0)	-64 <sup>‡</sup> (-75.0; -52.9)
<b>Body Weight</b>			
Baseline (mean) in kg	87.5	85.9	86.9
% change from baseline (adjusted mean)	-0.6	-2.8	-3.9
Difference from placebo (adjusted mean) (95% CI) <sup>†</sup>		-2.2 <sup>‡</sup> (-2.9; -1.6)	-3.3 <sup>‡</sup> (-4.0; -2.6)

\* Intent-to-treat population using last observation in study prior to glycemic rescue therapy

<sup>†</sup> Least squares mean adjusted for baseline value and stratification factors

<sup>‡</sup> p<0.001

## 14.2 Combination Therapy

### Add-on Combination Therapy with Metformin

A total of 1284 patients with type 2 diabetes inadequately controlled on metformin monotherapy (greater than or equal to 2,000 mg/day, or at least 1,500 mg/day if higher dose not tolerated) participated in a 26-week, double-blind, placebo- and active-controlled study to evaluate the efficacy and safety of INVOKANA in combination with metformin. The mean age was 55 years, 47% of patients were men, and the mean baseline eGFR was 89 mL/min/1.73 m<sup>2</sup>. Patients already on the required metformin dose (N=1009) were randomized after completing a 2-week, single-blind, placebo run-in period. Patients taking less than the required metformin dose or patients on metformin in combination with another antihyperglycemic agent (N=275) were switched to metformin monotherapy (at doses described above) for at least 8 weeks before entering the 2-week, single-blind, placebo run-in. After the placebo run-in period, patients were randomized to INVOKANA 100 mg, INVOKANA 300 mg, sitagliptin 100 mg, or placebo, administered once daily as add-on therapy to metformin.

At the end of treatment, INVOKANA 100 mg and 300 mg once daily resulted in a statistically significant improvement in HbA<sub>1C</sub> (p<0.001 for both doses) compared to placebo when added to metformin. INVOKANA 100 mg and 300 mg once daily also resulted in a greater proportion of patients achieving an HbA<sub>1C</sub> less than 7%, in significant reduction in fasting plasma glucose (FPG), in improved postprandial glucose (PPG), and in percent body weight reduction compared to placebo when added to metformin (see Table 10). Statistically significant



( $p < 0.001$  for both doses) mean changes from baseline in systolic blood pressure relative to placebo were -5.4 mmHg and -6.6 mmHg with INVOKANA 100 mg and 300 mg, respectively.

**Table 10: Results from 26-Week Placebo-Controlled Clinical Study of INVOKANA in Combination with Metformin\***

<b>Efficacy Parameter</b>	<b>Placebo + Metformin (N=183)</b>	<b>INVOKANA 100 mg + Metformin (N=368)</b>	<b>INVOKANA 300 mg + Metformin (N=367)</b>
<b>HbA<sub>1C</sub> (%)</b>			
Baseline (mean)	7.96	7.94	7.95
Change from baseline (adjusted mean)	-0.17	-0.79	-0.94
Difference from placebo (adjusted mean) (95% CI) <sup>†</sup>		-0.62 <sup>‡</sup> (-0.76; -0.48)	-0.77 <sup>‡</sup> (-0.91; -0.64)
<b>Percent of patients achieving HbA<sub>1C</sub> &lt; 7%</b>	30	46 <sup>‡</sup>	58 <sup>‡</sup>
<b>Fasting Plasma Glucose (mg/dL)</b>			
Baseline (mean)	164	169	173
Change from baseline (adjusted mean)	2	-27	-38
Difference from placebo (adjusted mean) (95% CI) <sup>†</sup>		-30 <sup>‡</sup> (-36; -24)	-40 <sup>‡</sup> (-46; -34)
<b>2-hour Postprandial Glucose (mg/dL)</b>			
Baseline (mean)	249	258	262
Change from baseline (adjusted mean)	-10	-48	-57
Difference from placebo (adjusted mean) (95% CI) <sup>†</sup>		-38 <sup>‡</sup> (-49; -27)	-47 <sup>‡</sup> (-58; -36)
<b>Body Weight</b>			
Baseline (mean) in kg	86.7	88.7	85.4
% change from baseline (adjusted mean)	-1.2	-3.7	-4.2
Difference from placebo (adjusted mean) (95% CI) <sup>†</sup>		-2.5 <sup>‡</sup> (-3.1; -1.9)	-2.9 <sup>‡</sup> (-3.5; -2.3)

\* Intent-to-treat population using last observation in study prior to glycemic rescue therapy

<sup>†</sup> Least squares mean adjusted for baseline value and stratification factors

<sup>‡</sup>  $p < 0.001$

### Initial Combination Therapy with Metformin

A total of 1186 patients with type 2 diabetes inadequately controlled with diet and exercise participated in a 26-week double-blind, active-controlled, parallel-group, 5-arm, multicenter study to evaluate the efficacy and safety of initial therapy with INVOKANA in combination with metformin XR. The median age was 56 years, 48% of patients were men, and the mean baseline eGFR was 87.6 mL/min/1.73 m<sup>2</sup>. The median duration of diabetes was 1.6 years, and 72% of patients were treatment naïve. After completing a 2-week single-blind placebo run-in period, patients were randomly assigned for a double-blind treatment period of 26 weeks to 1 of 5 treatment groups (Table 11). The metformin XR dose was initiated at 500 mg/day for the first week of treatment and then increased to 1000 mg/day. Metformin XR or matching placebo was up-titrated every 2-3 weeks during the next 8 weeks of treatment to a maximum daily dose of 1500 to 2000 mg/day, as tolerated; about 90% of patients reached 2000 mg/day.

At the end of treatment, INVOKANA 100 mg and INVOKANA 300 mg in combination with metformin XR resulted in a statistically significant greater improvement in HbA<sub>1C</sub> compared to their respective INVOKANA doses (100 mg and 300 mg) alone or metformin XR alone.

**Table 11: Results from 26-Week Active-Controlled Clinical Study of INVOKANA Alone or INVOKANA as Initial Combination Therapy with Metformin\***

<b>Efficacy Parameter</b>	<b>Metformin XR (N=237)</b>	<b>INVOKANA 100 mg (N=237)</b>	<b>INVOKANA 300 mg (N=238)</b>	<b>INVOKANA 100 mg + Metformin XR (N=237)</b>	<b>INVOKANA 300 mg + Metformin XR (N=237)</b>
<b>HbA<sub>1c</sub> (%)</b>					
Baseline (mean)	8.81	8.78	8.77	8.83	8.90
Change from baseline (adjusted mean) <sup>†</sup>	-1.30	-1.37	-1.42	-1.77	-1.78
Difference from canagliflozin 100 mg (adjusted mean) (95% CI) <sup>†</sup>				-0.40 <sup>‡</sup> (-0.59, -0.21)	
Difference from canagliflozin 300 mg (adjusted mean) (95% CI) <sup>†</sup>					-0.36 <sup>‡</sup> (-0.56, -0.17)
Difference from metformin XR (adjusted mean) (95% CI) <sup>†</sup>		-0.06 <sup>‡‡</sup> (-0.26, 0.13)	-0.11 <sup>‡‡</sup> (-0.31, 0.08)	-0.46 <sup>‡</sup> (-0.66, -0.27)	-0.48 <sup>‡</sup> (-0.67, -0.28)
<b>Percent of patients achieving HbA<sub>1c</sub> &lt; 7%</b>	38	34	39	47 <sup>§§</sup>	51 <sup>§§</sup>

\* Intent-to-treat population

<sup>†</sup> Least squares mean adjusted for covariates including baseline value and stratification factor<sup>‡</sup> Adjusted p=0.001 for superiority<sup>‡‡</sup> Adjusted p=0.001 for non-inferiority<sup>§§</sup> Adjusted p<0.05<sup>¶</sup> There were 121 patients without week 26 efficacy data. Analyses addressing missing data gave consistent results with the results provided in this table.

### INVOKANA Compared to Glimepiride, Both as Add-on Combination With Metformin

A total of 1450 patients with type 2 diabetes inadequately controlled on metformin monotherapy (greater than or equal to 2,000 mg/day, or at least 1,500 mg/day if higher dose not tolerated) participated in a 52-week, double-blind, active-controlled study to evaluate the efficacy and safety of INVOKANA in combination with metformin.

The mean age was 56 years, 52% of patients were men, and the mean baseline eGFR was 90 mL/min/1.73 m<sup>2</sup>. Patients tolerating maximally required metformin dose (N=928) were randomized after completing a 2-week, single-blind, placebo run-in period. Other patients (N=522) were switched to metformin monotherapy (at doses described above) for at least 10 weeks, then completed a 2-week single-blind run-in period. After the 2-week run-in period, patients were randomized to INVOKANA 100 mg, INVOKANA 300 mg, or glimepiride (titration allowed throughout the 52-week study to 6 or 8 mg), administered once daily as add-on therapy to metformin.

As shown in Table 12 and Figure 1, at the end of treatment, INVOKANA 100 mg provided similar reductions in HbA<sub>1c</sub> from baseline compared to glimepiride when added to metformin therapy. INVOKANA 300 mg provided a greater reduction from baseline in HbA<sub>1c</sub> compared to glimepiride, and the relative treatment difference was -0.12% (95% CI: -0.22; -0.02). As shown in Table 12, treatment with INVOKANA 100 mg and 300 mg daily provided greater improvements in percent body weight change, relative to glimepiride.

**Table 12: Results from 52-Week Clinical Study Comparing INVOKANA to Glimepiride in Combination with Metformin<sup>§</sup>**

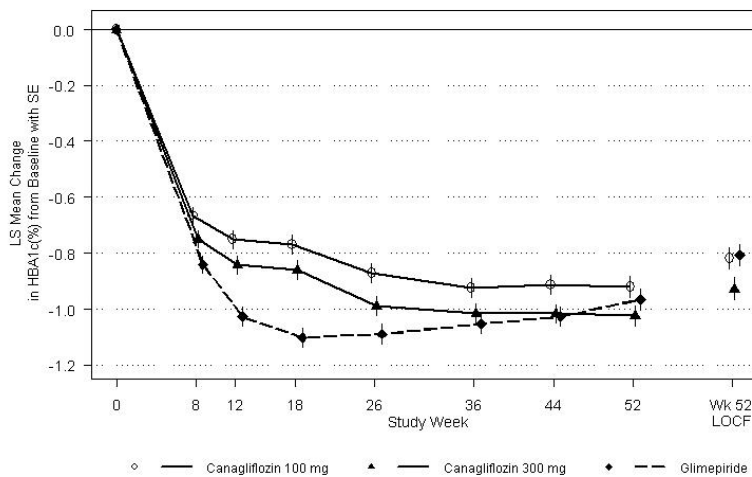
Efficacy Parameter	INVOKANA 100 mg + Metformin (N=483)	INVOKANA 300 mg + Metformin (N=485)	Glimepiride (titrated) + Metformin (N=482)
<b>HbA<sub>1C</sub> (%)</b>			
Baseline (mean)	7.78	7.79	7.83
Change from baseline (adjusted mean)	-0.82	-0.93	-0.81
Difference from glimepiride (adjusted mean) (95% CI) <sup>†</sup>	-0.01 <sup>‡</sup> (-0.11; 0.09)	-0.12 <sup>‡</sup> (-0.22; -0.02)	
<b>Percent of patients achieving HbA<sub>1C</sub> &lt; 7%</b>	54	60	56
<b>Fasting Plasma Glucose (mg/dL)</b>			
Baseline (mean)	165	164	166
Change from baseline (adjusted mean)	-24	-28	-18
Difference from glimepiride (adjusted mean) (95% CI) <sup>†</sup>	-6 (-10; -2)	-9 (-13; -5)	
<b>Body Weight</b>			
Baseline (mean) in kg	86.8	86.6	86.6
% change from baseline (adjusted mean)	-4.2	-4.7	1.0
Difference from glimepiride (adjusted mean) (95% CI) <sup>†</sup>	-5.2 <sup>§</sup> (-5.7; -4.7)	-5.7 <sup>§</sup> (-6.2; -5.1)	

\* Intent-to-treat population using last observation in study prior to glycemic rescue therapy

<sup>†</sup> Least squares mean adjusted for baseline value and stratification factors

<sup>‡</sup> INVOKANA + metformin is considered non-inferior to glimepiride + metformin because the upper limit of this confidence interval is less than the pre-specified non-inferiority margin of < 0.3%.

<sup>§</sup> p<0.001

**Figure 1: Mean HbA<sub>1C</sub> Change at Each Time Point (Completers) and at Week 52 Using Last Observation Carried Forward (mITT Population)**

### Add-on Combination Therapy With Sulfonylurea

A total of 127 patients with type 2 diabetes inadequately controlled on sulfonylurea monotherapy participated in an 18-week, double-blind, placebo-controlled sub-study to evaluate the efficacy and safety of INVOKANA in combination with sulfonylurea. The mean age was 65 years, 57% of patients were men, and the mean baseline

eGFR was 69 mL/min/1.73 m<sup>2</sup>. Patients treated with sulfonylurea monotherapy on a stable protocol-specified dose (greater than or equal to 50% maximal dose) for at least 10 weeks completed a 2-week, single-blind, placebo run-in period. After the run-in period, patients with inadequate glycemic control were randomized to INVOKANA 100 mg, INVOKANA 300 mg, or placebo, administered once daily as add-on to sulfonylurea.

As shown in Table 13, at the end of treatment, INVOKANA 100 mg and 300 mg daily provided statistically significant ( $p < 0.001$  for both doses) improvements in HbA<sub>1C</sub> relative to placebo when added to sulfonylurea. INVOKANA 300 mg once daily compared to placebo resulted in a greater proportion of patients achieving an HbA<sub>1C</sub> less than 7%, (33% vs 5%), greater reductions in fasting plasma glucose (-36 mg/dL vs +12 mg/dL), and greater percent body weight reduction (-2.0% vs -0.2%).

**Table 13: Results from 18-Week Placebo–Controlled Clinical Study of INVOKANA in Combination with Sulfonylurea\***

<b>Efficacy Parameter</b>	<b>Placebo + Sulfonylurea (N=45)</b>	<b>INVOKANA 100 mg + Sulfonylurea (N=42)</b>	<b>INVOKANA 300 mg + Sulfonylurea (N=40)</b>
<b>HbA<sub>1C</sub> (%)</b>			
Baseline (mean)	8.49	8.29	8.28
Change from baseline (adjusted mean)	0.04	-0.70	-0.79
Difference from placebo (adjusted mean) (95% CI) <sup>†</sup>		-0.74 <sup>‡</sup> (-1.15; -0.33)	-0.83 <sup>‡</sup> (-1.24; -0.41)

\* Intent-to-treat population using last observation in study prior to glycemic rescue therapy

<sup>†</sup> Least squares mean adjusted for baseline value

<sup>‡</sup>  $p < 0.001$

### Add-on Combination Therapy With Metformin and Sulfonylurea

A total of 469 patients with type 2 diabetes inadequately controlled on the combination of metformin (greater than or equal to 2,000 mg/day or at least 1,500 mg/day if higher dose not tolerated) and sulfonylurea (maximal or near-maximal effective dose) participated in a 26-week, double-blind, placebo-controlled study to evaluate the efficacy and safety of INVOKANA in combination with metformin and sulfonylurea. The mean age was 57 years, 51% of patients were men, and the mean baseline eGFR was 89 mL/min/1.73 m<sup>2</sup>. Patients already on the protocol-specified doses of metformin and sulfonylurea (N=372) entered a 2-week, single-blind, placebo run-in period. Other patients (N=97) were required to be on a stable protocol-specified dose of metformin and sulfonylurea for at least 8 weeks before entering the 2-week run-in period. Following the run-in period, patients were randomized to INVOKANA 100 mg, INVOKANA 300 mg, or placebo, administered once daily as add-on to metformin and sulfonylurea.

At the end of treatment, INVOKANA 100 mg and 300 mg once daily resulted in a statistically significant improvement in HbA<sub>1C</sub> ( $p < 0.001$  for both doses) compared to placebo when added to metformin and sulfonylurea. INVOKANA 100 mg and 300 mg once daily also resulted in a greater proportion of patients achieving an HbA<sub>1C</sub> less than 7%, in a significant reduction in fasting plasma glucose (FPG), and in percent body weight reduction compared to placebo when added to metformin and sulfonylurea (see Table 14).

**Table 14: Results from 26-Week Placebo-Controlled Clinical Study of INVOKANA in Combination with Metformin and Sulfonylurea\***

<b>Efficacy Parameter</b>	<b>Placebo + Metformin and Sulfonylurea (N=156)</b>	<b>INVOKANA 100 mg + Metformin and Sulfonylurea (N=157)</b>	<b>INVOKANA 300 mg + Metformin and Sulfonylurea (N=156)</b>
<b>HbA<sub>1C</sub> (%)</b>			
Baseline (mean)	8.12	8.13	8.13
Change from baseline (adjusted mean)	-0.13	-0.85	-1.06
Difference from placebo (adjusted mean) (95% CI) <sup>†</sup>		-0.71 <sup>‡</sup> (-0.90; -0.52)	-0.92 <sup>‡</sup> (-1.11; -0.73)
<b>Percent of patients achieving A<sub>1C</sub> &lt; 7%</b>	18	43 <sup>‡</sup>	57 <sup>‡</sup>
<b>Fasting Plasma Glucose (mg/dL)</b>			
Baseline (mean)	170	173	168
Change from baseline (adjusted mean)	4	-18	-31
Difference from placebo (adjusted mean) (95% CI) <sup>†</sup>		-22 <sup>‡</sup> (-31; -13)	-35 <sup>‡</sup> (-44; -25)
<b>Body Weight</b>			
Baseline (mean) in kg	90.8	93.5	93.5
% change from baseline (adjusted mean)	-0.7	-2.1	-2.6
Difference from placebo (adjusted mean) (95% CI) <sup>†</sup>		-1.4 <sup>‡</sup> (-2.1; -0.7)	-2.0 <sup>‡</sup> (-2.7; -1.3)

\* Intent-to-treat population using last observation in study prior to glycemic rescue therapy

<sup>†</sup> Least squares mean adjusted for baseline value and stratification factors

<sup>‡</sup> p<0.001

### Add-on Combination Therapy With Metformin and Sitagliptin

A total of 217 patients with type 2 diabetes inadequately controlled on the combination of metformin (greater than or equal to 1,500 mg/day) and sitagliptin 100 mg/day (or equivalent fixed-dose combination) participated in a 26-week, double-blind, placebo-controlled study to evaluate the efficacy and safety of INVOKANA in combination with metformin and sitagliptin. The mean age was 57 years, 58% of patients were men, 73% of patients were Caucasian, 15% were Asian, and 12% were Black or African-American. The mean baseline eGFR was 90 mL/min/1.73 m<sup>2</sup> and the mean baseline BMI was 32 kg/m<sup>2</sup>. The mean duration of diabetes was 10 years. Eligible patients entered a 2-week, single-blind, placebo run-in period and were subsequently randomized to INVOKANA 100 mg or placebo, administered once daily as add-on to metformin and sitagliptin. Patients with a baseline eGFR of 70 mL/min/1.73 m<sup>2</sup> or greater who were tolerating INVOKANA 100 mg and who required additional glycemic control (fasting finger stick 100 mg/dL or greater at least twice within 2 weeks) were up-titrated to INVOKANA 300 mg. While up-titration occurred as early as Week 4, most (90%) patients randomized to INVOKANA were up-titrated to INVOKANA 300 mg by 6 to 8 weeks.

At the end of 26 weeks, INVOKANA resulted in a statistically significant improvement in HbA<sub>1C</sub> (p<0.001) compared to placebo when added to metformin and sitagliptin.

**Table 15: Results from 26-Week Placebo-Controlled Clinical Study of INVOKANA in Combination with Metformin and Sitagliptin**

<b>Efficacy Parameter</b>	<b>Placebo + Metformin and Sitagliptin (N=108*)</b>	<b>INVOKANA + Metformin and Sitagliptin (N=109*)</b>
<b>HbA<sub>1c</sub> (%)</b>		
Baseline (mean)	8.40	8.50
Change from baseline (adjusted mean)	-0.03	-0.83
Difference from placebo (adjusted mean) (95% CI) <sup>†§</sup>		-0.81 <sup>#</sup> (-1.11; -0.51)
<b>Percent of patients achieving HbA<sub>1c</sub> &lt; 7%<sup>‡</sup></b>	9	28
<b>Fasting Plasma Glucose (mg/dL)<sup>¶</sup></b>		
Baseline (mean)	180	185
Change from baseline (adjusted mean)	-3	-28
Difference from placebo (adjusted mean) (95% CI)		-25 <sup>#</sup> (-39; -11)

\* To preserve the integrity of randomization, all randomized patients were included in the analysis. The patient who was randomized once to each arm was analyzed on INVOKANA.

† Early treatment discontinuation before week 26, occurred in 11.0% and 24.1% of INVOKANA and placebo patients, respectively.

‡ Patients without week 26 efficacy data were considered as non-responders when estimating the proportion achieving HbA<sub>1c</sub> < 7%.

§ Estimated using a multiple imputation method modeling a “wash-out” of the treatment effect for patients having missing data who discontinued treatment. Missing data was imputed only at week 26 and analyzed using ANCOVA.

¶ Estimated using a multiple imputation method modeling a “wash-out” of the treatment effect for patients having missing data who discontinued treatment. A mixed model for repeated measures was used to analyze the imputed data.

# p<0.001

### INVOKANA Compared to Sitagliptin, Both as Add-on Combination Therapy With Metformin and Sulfonylurea

A total of 755 patients with type 2 diabetes inadequately controlled on the combination of metformin (greater than or equal to 2,000 mg/day or at least 1,500 mg/day if higher dose not tolerated) and sulfonylurea (near-maximal or maximal effective dose) participated in a 52-week, double-blind, active-controlled study to compare the efficacy and safety of INVOKANA 300 mg versus sitagliptin 100 mg in combination with metformin and sulfonylurea. The mean age was 57 years, 56% of patients were men, and the mean baseline eGFR was 88 mL/min/1.73 m<sup>2</sup>. Patients already on protocol-specified doses of metformin and sulfonylurea (N=716) entered a 2-week single-blind, placebo run-in period. Other patients (N=39) were required to be on a stable protocol-specified dose of metformin and sulfonylurea for at least 8 weeks before entering the 2-week run-in period. Following the run-in period, patients were randomized to INVOKANA 300 mg or sitagliptin 100 mg as add-on to metformin and sulfonylurea.

As shown in Table 16 and Figure 2, at the end of treatment, INVOKANA 300 mg provided greater HbA<sub>1c</sub> reduction compared to sitagliptin 100 mg when added to metformin and sulfonylurea (p<0.05). INVOKANA 300 mg resulted in a mean percent change in body weight from baseline of -2.5% compared to +0.3% with sitagliptin 100 mg. A mean change in systolic blood pressure from baseline of -5.06 mmHg was observed with INVOKANA 300 mg compared to +0.85 mmHg with sitagliptin 100 mg.

**Table 16: Results from 52-Week Clinical Study Comparing INVOKANA to Sitagliptin in Combination with Metformin and Sulfonylurea\***

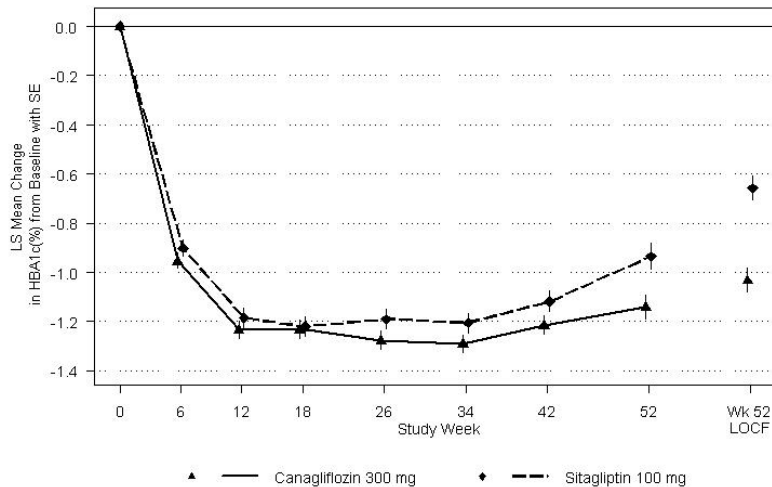
Efficacy Parameter	INVOKANA 300 mg + Metformin and Sulfonylurea (N=377)	Sitagliptin 100 mg + Metformin and Sulfonylurea (N=378)
<b>HbA<sub>1c</sub> (%)</b>		
Baseline (mean)	8.12	8.13
Change from baseline (adjusted mean)	-1.03	-0.66
Difference from sitagliptin (adjusted mean) (95% CI) <sup>†</sup>	-0.37 <sup>‡</sup> (-0.50; -0.25)	
<b>Percent of patients achieving HbA<sub>1c</sub> &lt; 7%</b>	48	35
<b>Fasting Plasma Glucose (mg/dL)</b>		
Baseline (mean)	170	164
Change from baseline (adjusted mean)	-30	-6
Difference from sitagliptin (adjusted mean) (95% CI) <sup>†</sup>	-24 (-30; -18)	
<b>Body Weight</b>		
Baseline (mean) in kg	87.6	89.6
% change from baseline (adjusted mean)	-2.5	0.3
Difference from sitagliptin (adjusted mean) (95% CI) <sup>†</sup>	-2.8 <sup>§</sup> (-3.3; -2.2)	

\* Intent-to-treat population using last observation in study prior to glycemic rescue therapy

<sup>†</sup> Least squares mean adjusted for baseline value and stratification factors

<sup>‡</sup> INVOKANA + metformin + sulfonylurea is considered non-inferior to sitagliptin + metformin + sulfonylurea because the upper limit of this confidence interval is less than the pre-specified non-inferiority margin of < 0.3%.

<sup>§</sup> p<0.001

**Figure 2: Mean HbA<sub>1c</sub> Change at Each Time Point (Completers) and at Week 52 Using Last Observation Carried Forward (mITT Population)**

### Add-on Combination Therapy With Metformin and Pioglitazone

A total of 342 patients with type 2 diabetes inadequately controlled on the combination of metformin (greater than or equal to 2,000 mg/day or at least 1,500 mg/day if higher dose not tolerated) and pioglitazone (30 or 45 mg/day) participated in a 26-week, double-blind, placebo-controlled study to evaluate the efficacy and safety

of INVOKANA in combination with metformin and pioglitazone. The mean age was 57 years, 63% of patients were men, and the mean baseline eGFR was 86 mL/min/1.73 m<sup>2</sup>. Patients already on protocol-specified doses of metformin and pioglitazone (N=163) entered a 2-week, single-blind, placebo run-in period. Other patients (N=181) were required to be on stable protocol-specified doses of metformin and pioglitazone for at least 8 weeks before entering the 2-week run-in period. Following the run-in period, patients were randomized to INVOKANA 100 mg, INVOKANA 300 mg, or placebo, administered once daily as add-on to metformin and pioglitazone.

At the end of treatment, INVOKANA 100 mg and 300 mg once daily resulted in a statistically significant improvement in HbA<sub>1c</sub> (p<0.001 for both doses) compared to placebo when added to metformin and pioglitazone. INVOKANA 100 mg and 300 mg once daily also resulted in a greater proportion of patients achieving an HbA<sub>1c</sub> less than 7%, in significant reduction in fasting plasma glucose (FPG) and in percent body weight reduction compared to placebo when added to metformin and pioglitazone (see Table 17). Statistically significant (p<0.05 for both doses) mean changes from baseline in systolic blood pressure relative to placebo were -4.1 mmHg and -3.5 mmHg with INVOKANA 100 mg and 300 mg, respectively.

**Table 17: Results from 26-Week Placebo-Controlled Clinical Study of INVOKANA in Combination with Metformin and Pioglitazone\***

<b>Efficacy Parameter</b>	<b>Placebo + Metformin and Pioglitazone (N=115)</b>	<b>INVOKANA 100 mg + Metformin and Pioglitazone (N=113)</b>	<b>INVOKANA 300 mg + Metformin and Pioglitazone (N=114)</b>
<b>HbA<sub>1c</sub> (%)</b>			
Baseline (mean)	8.00	7.99	7.84
Change from baseline (adjusted mean)	-0.26	-0.89	-1.03
Difference from placebo (adjusted mean) (95% CI) <sup>†</sup>		-0.62 <sup>‡</sup> (-0.81; -0.44)	-0.76 <sup>‡</sup> (-0.95; -0.58)
<b>Percent of patients achieving HbA<sub>1c</sub> &lt; 7%</b>	33	47 <sup>‡</sup>	64 <sup>‡</sup>
<b>Fasting Plasma Glucose (mg/dL)</b>			
Baseline (mean)	164	169	164
Change from baseline (adjusted mean)	3	-27	-33
Difference from placebo (adjusted mean) (95% CI) <sup>†</sup>		-29 <sup>‡</sup> (-37; -22)	-36 <sup>‡</sup> (-43; -28)
<b>Body Weight</b>			
Baseline (mean) in kg	94.0	94.2	94.4
% change from baseline (adjusted mean)	-0.1	-2.8	-3.8
Difference from placebo (adjusted mean) (95% CI) <sup>†</sup>		-2.7 <sup>‡</sup> (-3.6; -1.8)	-3.7 <sup>‡</sup> (-4.6; -2.8)

\* Intent-to-treat population using last observation in study prior to glycemic rescue therapy

<sup>†</sup> Least squares mean adjusted for baseline value and stratification factors

<sup>‡</sup> p<0.001

### Add-On Combination Therapy With Insulin (With or Without Other Antihyperglycemic Agents)

A total of 1718 patients with type 2 diabetes inadequately controlled on insulin greater than or equal to 30 units/day or insulin in combination with other antihyperglycemic agents participated in an 18-week, double-blind, placebo-controlled substudy of a cardiovascular study to evaluate the efficacy and safety of INVOKANA in combination with insulin. The mean age was 63 years, 66% of patients were men, and the mean baseline eGFR



was 75 mL/min/1.73 m<sup>2</sup>. Patients on basal, bolus, or basal/bolus insulin for at least 10 weeks entered a 2-week, single-blind, placebo run-in period. Approximately 70% of patients were on a background basal/bolus insulin regimen. After the run-in period, patients were randomized to INVOKANA 100 mg, INVOKANA 300 mg, or placebo, administered once daily as add-on to insulin. The mean daily insulin dose at baseline was 83 units, which was similar across treatment groups.

At the end of treatment, INVOKANA 100 mg and 300 mg once daily resulted in a statistically significant improvement in HbA<sub>1c</sub> (p<0.001 for both doses) compared to placebo when added to insulin. INVOKANA 100 mg and 300 mg once daily also resulted in a greater proportion of patients achieving an HbA<sub>1c</sub> less than 7%, in significant reductions in fasting plasma glucose (FPG), and in percent body weight reductions compared to placebo (see Table 18). Statistically significant (p<0.001 for both doses) mean changes from baseline in systolic blood pressure relative to placebo were -2.6 mmHg and -4.4 mmHg with INVOKANA 100 mg and 300 mg, respectively.

**Table 18: Results from 18-Week Placebo-Controlled Clinical Study of INVOKANA in Combination with Insulin  $\geq$  30 Units/Day (With or Without Other Oral Antihyperglycemic Agents)\***

<b>Efficacy Parameter</b>	<b>Placebo + Insulin (N=565)</b>	<b>INVOKANA 100 mg + Insulin (N=566)</b>	<b>INVOKANA 300 mg + Insulin (N=587)</b>
<b>HbA<sub>1c</sub> (%)</b>			
Baseline (mean)	8.20	8.33	8.27
Change from baseline (adjusted mean)	0.01	-0.63	-0.72
Difference from placebo (adjusted mean) (95% CI) <sup>†</sup>		-0.65 <sup>‡</sup> (-0.73; -0.56)	-0.73 <sup>‡</sup> (-0.82; -0.65)
<b>Percent of patients achieving HbA<sub>1c</sub> &lt; 7%</b>	8	20 <sup>‡</sup>	25 <sup>‡</sup>
<b>Fasting Plasma Glucose (mg/dL)</b>			
Baseline	169	170	168
Change from baseline (adjusted mean)	4	-19	-25
Difference from placebo (adjusted mean) (97.5% CI) <sup>†</sup>		-23 <sup>‡</sup> (-29; -16)	-29 <sup>‡</sup> (-35; -23)
<b>Body Weight</b>			
Baseline (mean) in kg	97.7	96.9	96.7
% change from baseline (adjusted mean)	0.1	-1.8	-2.3
Difference from placebo (adjusted mean) (97.5% CI) <sup>†</sup>		-1.9 <sup>‡</sup> (-2.2; -1.6)	-2.4 <sup>‡</sup> (-2.7; -2.1)

\* Intent-to-treat population using last observation in study prior to glycemic rescue therapy

<sup>†</sup> Least squares mean adjusted for baseline value and stratification factors

<sup>‡</sup> p<0.001

## 14.3 Studies in Special Populations

### Adults 55 to 80 Years of Age

A total of 714 older patients with type 2 diabetes inadequately controlled on current diabetes therapy (either diet and exercise alone or in combination with oral or parenteral agents) participated in a 26-week, double-blind, placebo-controlled study to evaluate the efficacy and safety of INVOKANA in combination with current diabetes treatment. The mean age was 64 years, 55% of patients were men, and the mean baseline eGFR was

77 mL/min/1.73 m<sup>2</sup>. Patients were randomized to the addition of INVOKANA 100 mg, INVOKANA 300 mg, or placebo, administered once daily. At the end of treatment, INVOKANA provided statistically significant improvements from baseline relative to placebo in HbA<sub>1C</sub> (p<0.001 for both doses) of -0.57% (95% CI: -0.71; -0.44) for INVOKANA 100 mg and -0.70% (95% CI: -0.84; -0.57) for INVOKANA 300 mg. Statistically significant (p<0.001 for both doses) reductions from baseline in fasting plasma glucose (FPG) and body weight were also observed in this study relative to placebo [*see Use in Specific Populations (8.5)*].

### Moderate Renal Impairment

A total of 269 patients with type 2 diabetes and a baseline eGFR of 30 mL/min/1.73 m<sup>2</sup> to less than 50 mL/min/1.73 m<sup>2</sup> inadequately controlled on current diabetes therapy participated in a 26-week, double-blind, placebo-controlled clinical study to evaluate the efficacy and safety of INVOKANA in combination with current diabetes treatment (diet or antihyperglycemic agent therapy, with 95% of patients on insulin and/or sulfonylurea). The mean age was 68 years, 61% of patients were men, and the mean baseline eGFR was 39 mL/min/1.73 m<sup>2</sup>. Patients were randomized to the addition of INVOKANA 100 mg, INVOKANA 300 mg, or placebo, administered once daily.

At the end of treatment, INVOKANA 100 mg and INVOKANA 300 mg daily provided greater reductions in HbA<sub>1C</sub> relative to placebo (-0.30% [95% CI: -0.53; -0.07] and -0.40%, [95% CI: -0.64; -0.17], respectively) [*see Warnings and Precautions (5.4), Adverse Reactions (6.1), and Use in Specific Populations (8.6)*].

## **16 HOW SUPPLIED/STORAGE AND HANDLING**

INVOKANA (canagliflozin) tablets are available in the strengths and packages listed below:

100 mg tablets are yellow, capsule-shaped, film-coated tablets with “CFZ” on one side and “100” on the other side.

300 mg tablets are white, capsule-shaped, film-coated tablets with “CFZ” on one side and “300” on the other side.

**Nature and contents of container:** Tablets are individually packaged in PVC/Aluminum foil blisters with 10 tablets per blister strip. Cartons are packaged as follows: 10 tablets (1 blister strip), 30 tablets (3 blister strips), 90 tablets (9 blister strips), and 100 tablets (10 blister strips).

### Storage and Handling

Keep out of reach of children.

Do not store above 30°C. See expiry date on the outer pack.

## **17 PATIENT COUNSELING INFORMATION**

*See the approved patient labeling (Medication Guide).*

### Instructions

Instruct patients to read the Medication Guide before starting INVOKANA (canagliflozin) therapy and to reread it each time the prescription is renewed.

Inform patients of the potential risks and benefits of INVOKANA and of alternative modes of therapy. Also inform patients about the importance of adherence to dietary instructions, regular physical activity, periodic blood glucose monitoring and HbA<sub>1C</sub> testing, recognition and management of hypoglycemia and hyperglycemia, and assessment for diabetes complications. Advise patients to seek medical advice promptly during periods of stress such as fever, trauma, infection, or surgery, as medication requirements may change.

Instruct patients to take INVOKANA only as prescribed. If a dose is missed, advise patients to take it as soon as it is remembered unless it is almost time for the next dose, in which case patients should skip the missed dose and take the medicine at the next regularly scheduled time. Advise patients not to take two doses of INVOKANA at the same time.

Inform patients that the most common adverse reactions associated with INVOKANA are genital mycotic infection, urinary tract infection, and increased urination.

Inform female patients of child bearing age that the use of INVOKANA during pregnancy has not been studied in humans, and that INVOKANA should only be used during pregnancy only if the potential benefit justifies the potential risk to the fetus. Instruct patients to report pregnancies to their physicians as soon as possible.

Inform nursing mothers to discontinue INVOKANA or nursing, taking into account the importance of drug to the mother.

### Laboratory Tests

Due to its mechanism of action, patients taking INVOKANA will test positive for glucose in their urine.

### Lower Limb Amputation

Inform patients that INVOKANA is associated with an increased risk of amputations. Counsel patients about the importance of routine preventative foot care. Instruct patients to monitor for new pain or tenderness, sores or ulcers, or infections involving the leg or foot and to seek medical advice immediately if such signs or symptoms develop [*see Boxed Warning and Warnings and Precautions (5.1)*].

### Hypotension

Inform patients that symptomatic hypotension may occur with INVOKANA and advise them to contact their doctor if they experience such symptoms [*see Warnings and Precautions (5.2)*]. Inform patients that dehydration may increase the risk for hypotension, and to have adequate fluid intake.

### Ketoacidosis

Inform patients that ketoacidosis is a serious life-threatening condition. Cases of ketoacidosis have been reported during use of INVOKANA. Instruct patients to check ketones (when possible) if symptoms consistent with ketoacidosis occur even if blood glucose is not elevated. If symptoms of ketoacidosis (including nausea, vomiting, abdominal pain, tiredness, and labored breathing) occur, instruct patients to discontinue INVOKANA and seek medical advice immediately [*see Warnings and Precautions (5.3)*].

### Acute Kidney Injury

Inform patients that acute kidney injury has been reported during use of INVOKANA. Advise patients to seek medical advice immediately if they have reduced oral intake (such as due to acute illness or fasting) or increased fluid losses (such as due to vomiting, diarrhea, or excessive heat exposure), as it may be appropriate to temporarily discontinue INVOKANA use in those settings [*see Warnings and Precautions (5.4)*].

### Serious Urinary Tract Infections

Inform patients of the potential for urinary tract infections, which may be serious. Provide them with information on the symptoms of urinary tract infections. Advise them to seek medical advice if such symptoms occur [*see Warnings and Precautions (5.6)*].

### Genital Mycotic Infections in Females (e.g., Vulvovaginitis)

Inform female patients that vaginal yeast infection may occur and provide them with information on the signs and symptoms of vaginal yeast infection. Advise them of treatment options and when to seek medical advice [*see Warnings and Precautions (5.8)*].

### Genital Mycotic Infections in Males (e.g., Balanitis or Balanoposthitis)

Inform male patients that yeast infection of penis (e.g., balanitis or balanoposthitis) may occur, especially in uncircumcised males and patients with prior history. Provide them with information on the signs and symptoms of balanitis and balanoposthitis (rash or redness of the glans or foreskin of the penis). Advise them of treatment options and when to seek medical advice [*see Warnings and Precautions (5.8)*].

### Hypersensitivity Reactions

Inform patients that serious hypersensitivity reactions, such as urticaria, rash, anaphylaxis, and angioedema, have been reported with INVOKANA. Advise patients to report immediately any signs or symptoms suggesting allergic reaction, and to discontinue drug until they have consulted prescribing physicians.

### Bone Fracture

Inform patients that bone fractures have been reported in patients taking INVOKANA. Provide them with information on factors that may contribute to fracture risk.

### Pregnancy

Advise pregnant women, and females of reproductive potential of the potential risk to a fetus with treatment with INVOKANA [*see Use in Specific Populations (8.1)*]. Instruct females of reproductive potential to report pregnancies to their physicians as soon as possible.

### Lactation

Advise women that breastfeeding is not recommended during treatment with INVOKANA [*see Use in Specific Populations (8.2)*].

## **Warning according to the announcement of Ministry of Public Health**

1. Do not use in people with known allergy to this medicine.

2. Do not use for treatment of diabetes mellitus type 1, patients with ketoacidosis, patients with severe infection, people having severe accident.
3. Pregnant women should avoid using this medicine and nursing women should be cautious of using this medicine.
4. Should not use this medicine with alcoholic beverages.
5. If patients have nausea, vomiting, anorexia, stomachache, abnormal thirsty, weakness, difficult breath, and confusion, even though the level of blood sugar is not quite high, consult doctor or pharmacist as diabetic ketoacidosis may occur.
6. Should be cautious of bacterial and mycotic infection of genital and urinary tract system in patients using this medicine.

<b>Product</b>	<b>Manufactured by</b>	<b>Market authorization number</b>	<b>Date of authorization</b>
INVOKANA 100 MG	Janssen Ortho, LLC Gurabo, Puerto Rico	1C 36/58 (NC)	7 April 2015
INVOKANA 300 MG	Janssen Ortho, LLC Gurabo, Puerto Rico	1C 37/58 (NC)	7 April 2015
INVOKANA 100 MG	Janssen Cilag S.p.A. Latina, Italy	1C 15024/61 (NC)	17 April 2018
INVOKANA 300 MG	Janssen Cilag S.p.A. Latina, Italy	1C 15025/61 (NC)	17 April 2018

**Revised 07/2017**

**Licensed from Mitsubishi Tanabe Pharma Corporation**

**Imported by**

Janssen-Cilag Ltd.

106 Moo 4 Lad Krabang Industrial Estate,  
Chalongkrung Rd., Lamplatew, Lad Krabang,  
Bangkok 10520

Tel: +662-792-7200

Fax: +662-792-7222