

## **ABRILADA™**

### **1. Name of the Medicinal Product**

#### **1.1 Product name**

ABRILADA

#### **1.2 Strength**

40 mg/0.8 mL

#### **1.3 Pharmaceutical dosage form**

Solution for injection.

### **2. Qualitative and Quantitative Composition**

#### **2.1 Qualitative declaration**

Active Ingredient: adalimumab.

#### **2.2 Quantitative declaration**

##### **ABRILADA 40 mg solution for injection in pre-filled syringe**

Each 0.8 mL single dose pre-filled syringe contains 40 mg of adalimumab.

##### **ABRILADA 40 mg solution for injection in pre-filled pen**

Each 0.8 mL single dose pre-filled pen contains 40 mg of adalimumab.

Adalimumab is a recombinant human monoclonal antibody produced in Chinese Hamster Ovary cells.

For the full list of excipients, see section 6.1.

### **3. Pharmaceutical Form**

Solution for injection.

Clear, colourless to very light brown solution.

### **4. Clinical Particulars**

#### **4.1 Therapeutic indications**

##### **Rheumatoid arthritis (RA)**

ABRILADA in combination with methotrexate, is indicated for:

- the treatment of moderate to severe, active rheumatoid arthritis in adult patients when the response to disease-modifying anti-rheumatic drugs including methotrexate has been inadequate.
- the treatment of severe, active and progressive rheumatoid arthritis in adults not previously treated with methotrexate.

ABRILADA can be given as monotherapy in case of intolerance to methotrexate or when continued treatment with methotrexate is inappropriate.

Adalimumab has been shown to reduce the rate of progression of joint damage as measured by X-ray and to improve physical function, when given in combination with methotrexate.

##### **Juvenile idiopathic arthritis**

### ***Polyarticular juvenile idiopathic arthritis***

ABRILADA in combination with methotrexate is indicated for the treatment of active polyarticular juvenile idiopathic arthritis, in patients from the age of 2 years who have had an inadequate response to one or more disease-modifying anti-rheumatic drugs (DMARDs). ABRILADA can be given as monotherapy in case of intolerance to methotrexate or when continued treatment with methotrexate is inappropriate (for the efficacy in monotherapy, see section 5.1). Adalimumab has not been studied in patients aged less than 2 years.

### ***Enthesitis-related arthritis***

ABRILADA is indicated for the treatment of active enthesitis-related arthritis in patients, 6 years of age and older, who have had an inadequate response to, or who are intolerant of, conventional therapy (see section 5.1).

### ***Axial spondyloarthritis***

#### ***Ankylosing spondylitis (AS)***

ABRILADA is indicated for the treatment of adults with severe active ankylosing spondylitis who have had an inadequate response to conventional therapy.

#### ***Axial spondyloarthritis without radiographic evidence of AS***

ABRILADA is indicated for the treatment of adults with severe axial spondyloarthritis without radiographic evidence of AS but with objective signs of inflammation by elevated C-reactive protein (CRP) and/or MRI, who have had an inadequate response to, or are intolerant to non-steroidal anti-inflammatory drugs (NSAIDs).

### ***Psoriatic arthritis***

ABRILADA is indicated for the treatment of active and progressive psoriatic arthritis in adults when the response to previous disease-modifying anti-rheumatic drug therapy has been inadequate. Adalimumab has been shown to reduce the rate of progression of peripheral joint damage as measured by X-ray in patients with polyarticular symmetrical subtypes of the disease

(see section 5.1) and to improve physical function.

## **Psoriasis**

ABRILADA is indicated for the treatment of moderate to severe chronic plaque psoriasis in adult patients who are candidates for systemic therapy.

### **Paediatric plaque psoriasis**

ABRILADA is indicated for the treatment of severe chronic plaque psoriasis in children and adolescents from 4 years of age who have had an inadequate response to or are inappropriate candidates for topical therapy and phototherapies.

### **Hidradenitis suppurativa (HS)**

ABRILADA is indicated for the treatment of active moderate to severe hidradenitis suppurativa (acne inversa) in adults and adolescents from 12 years of age with an inadequate response to conventional systemic HS therapy (see sections 5.1 and 5.2).

## **Crohn's disease**

ABRILADA is indicated for treatment of moderately to severely active Crohn's disease, in adult patients who have not responded despite a full and adequate course of therapy with a corticosteroid and/or an immunosuppressant; or who are intolerant to or have medical contraindications for such therapies.

### **Paediatric Crohn's disease**

ABRILADA is indicated for the treatment of moderately to severely active Crohn's disease in paediatric patients (from 6 years of age) who have had an inadequate response to conventional therapy including primary nutrition therapy and a corticosteroid and/or an immunomodulator, or who are intolerant to or have contraindications for such therapies.

## **Ulcerative colitis**

ABRILADA is indicated for treatment of moderately to severely active ulcerative colitis in adult patients who have had an inadequate response to conventional therapy including corticosteroids and 6-mercaptopurine (6-MP) or azathioprine (AZA), or who are intolerant to or have medical contraindications for such therapies.

### **Uveitis**

ABRILADA is indicated for the treatment of non-infectious intermediate, posterior and panuveitis in adult patients who have had an inadequate response to corticosteroids, in patients in need of corticosteroid-sparing, or in whom corticosteroid treatment is inappropriate.

### **Paediatric uveitis**

ABRILADA is indicated for the treatment of paediatric chronic non-infectious anterior uveitis in patients from 2 years of age who have had an inadequate response to or are intolerant to conventional therapy, or in whom conventional therapy is inappropriate.

## **4.2 Posology and method of administration**

ABRILADA treatment should be initiated and supervised by specialist physicians experienced in the diagnosis and treatment of conditions for which ABRILADA is indicated. Ophthalmologists are advised to consult with an appropriate specialist before initiation of treatment with ABRILADA (see section 4.4).

Patients may self-inject with ABRILADA if their health care provider determines that it is appropriate and with medical follow-up as necessary.

During treatment with ABRILADA, other concomitant therapies (e.g., corticosteroids and/or immunomodulatory agents) should be optimised.

### **Posology**

#### ***Rheumatoid arthritis***

The recommended dose of ABRILADA for adult patients with rheumatoid arthritis is 40 mg

adalimumab administered every other week as a single dose via subcutaneous injection.  
Methotrexate should be continued during treatment with ABRILADA.

Glucocorticoids, salicylates, non-steroidal anti-inflammatory drugs, or analgesics can be continued during treatment with ABRILADA. Regarding combination with disease modifying anti-rheumatic drugs other than methotrexate, see sections 4.4 and 5.1.

In monotherapy, some patients who experience a decrease in their response to ABRILADA 40 mg every other week may benefit from an increase in dosage to 40 mg adalimumab every week or 80 mg every other week.

Available data suggest that the clinical response is usually achieved within 12 weeks of treatment. Continued therapy should be reconsidered in a patient not responding within this time period.

#### Dose interruption

There may be a need for dose interruption, for instance before surgery or if a serious infection occurs. Available data suggest that re-introduction of adalimumab after discontinuation for 70 days or longer resulted in the same magnitudes of clinical response and similar safety profile as before dose interruption.

#### ***Ankylosing spondylitis, axial spondyloarthritis without radiographic evidence of AS and psoriatic arthritis***

The recommended dose of ABRILADA for patients with ankylosing spondylitis, axial spondyloarthritis without radiographic evidence of AS and for patients with psoriatic arthritis is 40 mg adalimumab administered every other week as a single dose via subcutaneous injection.

Available data suggest that the clinical response is usually achieved within 12 weeks of treatment. Continued therapy should be reconsidered in a patient not responding within this time period.

#### ***Psoriasis***

The recommended dose of ABRILADA for adult patients is an initial dose of 80 mg administered subcutaneously, followed by 40 mg subcutaneously given every other week starting one week

after the initial dose.

Continued therapy beyond 16 weeks should be carefully reconsidered in a patient not responding within this time period.

Beyond 16 weeks, patients with inadequate response to ABRILADA 40 mg every other week may benefit from an increase in dosage to 40 mg every week or 80 mg every other week. The benefits and risks of continued 40 mg weekly or 80 mg every other week therapy should be carefully reconsidered in a patient with an inadequate response after the increase in dosage (see section 5.1). If adequate response is achieved with 40 mg every week or 80 mg every other week, the dosage may subsequently be reduced to 40 mg every other week.

### ***Hidradenitis suppurativa***

The recommended ABRILADA dose regimen for adult patients with hidradenitis suppurativa (HS) is 160 mg initially at Day 1 (given in one day or split over two consecutive days), followed by 80 mg two weeks later at Day 15. Two weeks later (Day 29) continue with a dose of 40 mg every week or 80 mg every other week. Antibiotics may be continued during treatment with ABRILADA if necessary. It is recommended that the patient should use a topical antiseptic wash on their HS lesions on a daily basis during treatment with ABRILADA.

Continued therapy beyond 12 weeks should be carefully reconsidered in a patient with no improvement within this time period.

Should treatment be interrupted, ABRILADA 40 mg every week or 80 mg every other week may be re-introduced (see section 5.1).

The benefit and risk of continued long-term treatment should be periodically evaluated (see section 5.1).

### ***Crohn's disease***

The recommended ABRILADA induction dose regimen for adult patients with moderately to severely active Crohn's disease is 80 mg at Week 0 followed by 40 mg at Week 2. In case there is a need for a more rapid response to therapy, the regimen 160 mg at Week 0 (given in one day

or split over two consecutive days), 80 mg at Week 2, can be used with the awareness that the risk for adverse events is higher during induction.

After induction treatment, the recommended dose is 40 mg every other week via subcutaneous injection. Alternatively, if a patient has stopped ABRILADA and signs and symptoms of disease recur, ABRILADA may be re-administered. There is little experience from re-administration after more than 8 weeks since the previous dose.

During maintenance treatment, corticosteroids may be tapered in accordance with clinical practice guidelines.

Some patients who experience decrease in their response to ABRILADA 40 mg every other week may benefit from an increase in dosage to 40 mg ABRILADA every week or 80 mg every other week.

Some patients who have not responded by Week 4 may benefit from continued maintenance therapy through Week 12. Continued therapy should be carefully reconsidered in a patient not responding within this time period.

### ***Ulcerative colitis***

The recommended ABRILADA induction dose regimen for adult patients with moderate to severe ulcerative colitis is 160 mg at Week 0 (given in one day or split over two consecutive days) and 80 mg at Week 2. After induction treatment, the recommended dose is 40 mg every other week via subcutaneous injection.

During maintenance treatment, corticosteroids may be tapered in accordance with clinical practice guidelines.

Some patients who experience decrease in their response to ABRILADA 40 mg every other week may benefit from an increase in dosage to 40 mg ABRILADA every week or 80 mg every other week.

Available data suggest that clinical response is usually achieved within 2-8 weeks of treatment. ABRILADA therapy should not be continued in patients failing to respond within this time period.



## ***Uveitis***

The recommended dose of ABRILADA for adult patients with uveitis is an initial dose of 80 mg, followed by 40 mg given every other week starting one week after the initial dose. There is limited experience in the initiation of treatment with ABRILADA alone. Treatment with ABRILADA can be initiated in combination with corticosteroids and/or with other non-biologic immunomodulatory agents. Concomitant corticosteroids may be tapered in accordance with clinical practice starting two weeks after initiating treatment with ABRILADA.

It is recommended that the benefit and risk of continued long-term treatment should be evaluated on a yearly basis (see section 5.1).

## **Special populations**

### ***Elderly***

No dose adjustment is required.

### ***Renal and/or hepatic impairment***

Adalimumab has not been studied in these patient populations. No dose recommendations can be made.

### ***Paediatric population***

#### **Juvenile idiopathic arthritis**

##### ***Polyarticular juvenile idiopathic arthritis from 2 years of age***

The recommended dose of ABRILADA for patients with polyarticular juvenile idiopathic arthritis from 2 years of age is based on body weight (Table 1). ABRILADA is administered every other week via subcutaneous injection.

**Table 1. ABRILADA Dose for Patients with Polyarticular Juvenile Idiopathic Arthritis**

Patient Weight	Dosing Regimen
10 kg to < 30 kg	20 mg every other week
≥ 30 kg	40 mg every other week

Available data suggest that clinical response is usually achieved within 12 weeks of treatment. Continued therapy should be carefully reconsidered in a patient not responding within this time period.

There is no relevant use of adalimumab in patients aged less than 2 years for this indication.

#### Enthesitis-related arthritis

The recommended dose of ABRILADA for patients with enthesitis-related arthritis from 6 years of age is based on body weight (Table 2). ABRILADA is administered every other week via subcutaneous injection.

**Table 2. ABRILADA Dose for Patients with Enthesitis-Related Arthritis**

Patient Weight	Dosing Regimen
15 kg to < 30 kg	20 mg every other week
≥ 30 kg	40 mg every other week

Adalimumab has not been studied in patients with enthesitis-related arthritis aged less than 6 years.

#### Paediatric plaque psoriasis

The recommended ABRILADA dose for patients with plaque psoriasis from 4 to 17 years of age is based on body weight (Table 3) ABRILADA is administered via subcutaneous injection.

**Table 3. ABRILADA Dose for Paediatric Patients with Plaque Psoriasis**

Patient Weight	Dosing Regimen
15 kg to < 30 kg	Initial dose of 20 mg, followed by 20 mg given every other week starting one week after the initial dose

---

<b>Patient Weight</b>	<b>Dosing Regimen</b>
$\geq 30$ kg	Initial dose of 40 mg, followed by 40 mg given every other week starting one week after the initial dose

---

Continued therapy beyond 16 weeks should be carefully considered in a patient not responding within this time period.

If retreatment with ABRILADA is indicated, the above guidance on dose and treatment duration should be followed.

The safety of adalimumab in paediatric patients with plaque psoriasis has been assessed for a mean of 13 months.

There is no relevant use of adalimumab in children aged less than 4 years for this indication.

#### Adolescent hidradenitis suppurativa (from 12 years of age, weighing at least 30 kg)

There are no clinical trials with adalimumab in adolescent patients with HS. The posology of adalimumab in these patients has been determined from pharmacokinetic modelling and simulation (see section 5.2).

The recommended ABRILADA dose is 80 mg at Week 0 followed by 40 mg every other week starting at Week 1 via subcutaneous injection.

In adolescent patients with inadequate response to ABRILADA 40 mg every other week, an increase in dosage to 40 mg every week or 80 mg every other week may be considered.

Antibiotics may be continued during treatment with ABRILADA if necessary. It is recommended that the patient should use a topical antiseptic wash on their HS lesions on a daily basis during treatment with ABRILADA.

Continued therapy beyond 12 weeks should be carefully reconsidered in a patient with no improvement within this time period.

Should treatment be interrupted, ABRILADA may be re-introduced as appropriate.

The benefit and risk of continued long-term treatment should be periodically evaluated (see adult data in section 5.1).

There is no relevant use of adalimumab in children aged less than 12 years in this indication.

### Paediatric Crohn's disease

The recommended dose of ABRILADA for patients with Crohn's disease from 6 to 17 years of age is based on body weight (Table 4). ABRILADA is administered via subcutaneous injection.

**Table 4. ABRILADA Dose for Paediatric Patients with Crohn's Disease**

<b>Patient Weight</b>	<b>Induction Dose</b>	<b>Maintenance Dose Starting at Week 4</b>
< 40 kg	<ul style="list-style-type: none"> <li>40 mg at Week 0 and 20 mg at Week 2</li> </ul> <p>In case there is a need for a more rapid response to therapy with the awareness that the risk for adverse events may be higher with use of the higher induction dose, the following dose may be used:</p> <ul style="list-style-type: none"> <li>80 mg at Week 0 and 40 mg at Week 2</li> </ul>	20 mg every other week
≥ 40 kg	<ul style="list-style-type: none"> <li>80 mg at Week 0 and 40 mg at Week 2</li> </ul> <p>In case there is a need for a more rapid response to therapy with the awareness that the risk for adverse events may be higher with use of the higher induction dose, the following dose may be used:</p> <ul style="list-style-type: none"> <li>160 mg at Week 0 and 80 mg at Week 2</li> </ul>	40 mg every other week

Patients who experience insufficient response may benefit from an increase in dosage:

- < 40 kg: 20 mg every week
- ≥ 40 kg: 40 mg every week or 80 mg every other week

Continued therapy should be carefully considered in a subject not responding by Week 12.

There is no relevant use of adalimumab in children aged less than 6 years for this indication.

### Paediatric Uveitis

The recommended dose of ABRILADA for paediatric patients with uveitis from 2 years of age is based on body weight (Table 5). ABRILADA is administered via subcutaneous injection.

In paediatric uveitis, there is no experience in the treatment with adalimumab without concomitant treatment with methotrexate.

**Table 5. ABRILADA Dose for Paediatric Patients with Uveitis**

Patient Weight	Dosing Regimen
< 30 kg	20 mg every other week in combination with methotrexate
≥ 30 kg	40 mg every other week in combination with methotrexate

When ABRILADA therapy is initiated, a loading dose of 40 mg for patients < 30 kg or 80 mg for patients ≥ 30 kg may be administered one week prior to the start of maintenance therapy. No clinical data are available on the use of an adalimumab loading dose in children < 6 years of age (see section 5.2).

There is no relevant use of adalimumab in children aged less than 2 years in this indication.

It is recommended that the benefit and risk of continued long-term treatment should be evaluated on a yearly basis (see section 5.1).

### Paediatric ulcerative colitis

The safety and efficacy of adalimumab in children aged 4-17 years have not yet been established. No data are available. There is no relevant use of adalimumab in children aged less than 4 years for this indication.

### Psoriatic arthritis and axial spondyloarthritis including ankylosing spondylitis

There is no relevant use of adalimumab in the paediatric population for the indications of ankylosing spondylitis and psoriatic arthritis.

### **Method of administration**

ABRILADA is administered by subcutaneous injection.

ABRILADA may be left at room temperature for about 15 to 30 minutes before injecting. Do not remove the cap or cover while allowing it to reach room temperature. Carefully inspect the solution in the ABRILADA pre-filled syringe, pre-filled pen or single dose vial for particulate matter and discolouration prior to subcutaneous administration. If particulates or discolourations are noted, do not use the product. ABRILADA does not contain preservatives (see section 6.6); therefore, discard unused portions of drug.

Patients using the ABRILADA pre-filled syringe or pre-filled pen should inject the full amount in the syringe.

Injections should occur at different sites in the thigh or abdomen. Rotate injection sites and do not give injections into areas where the skin is tender, bruised, red or hard.

### **4.3 Contraindications**

Hypersensitivity to the active substance or to any of the excipients listed in section 6.1.

Active tuberculosis or other severe infections such as sepsis, and opportunistic infections (see section 4.4).

Moderate to severe heart failure (NYHA class III/IV) (see section 4.4).

### **4.4 Special warnings and precautions for use**

#### **Traceability**

In order to improve traceability of biological medicinal products, the name and the batch number of the administered product should be clearly recorded.

## **Infections**

Patients taking tumour necrosis factor (TNF)-antagonists are more susceptible to serious infections. Impaired lung function may increase the risk for developing infections. Patients must therefore be monitored closely for infections, including tuberculosis, before, during and after treatment with ABRILADA. Because the elimination of adalimumab may take up to four months, monitoring should be continued throughout this period.

Treatment with ABRILADA should not be initiated in patients with active infections including chronic or localised infections until infections are controlled. In patients who have been exposed to tuberculosis and patients who have travelled in areas of high risk of tuberculosis or endemic mycoses, such as histoplasmosis, coccidioidomycosis, or blastomycosis, the risk and benefits of treatment with ABRILADA should be considered prior to initiating therapy (see *Other opportunistic infections*).

Patients who develop a new infection while undergoing treatment with ABRILADA should be monitored closely and undergo a complete diagnostic evaluation. Administration of ABRILADA should be discontinued if a patient develops a new serious infection or sepsis, and appropriate antimicrobial or antifungal therapy should be initiated until the infection is controlled. Physicians should exercise caution when considering the use of ABRILADA in patients with a history of recurring infection or with underlying conditions which may predispose patients to infections, including the use of concomitant immunosuppressive medications.

### ***Serious infections***

Serious infections, including sepsis, due to bacterial, mycobacterial, invasive fungal, parasitic, viral, or other opportunistic infections such as listeriosis, legionellosis and pneumocystis have been reported in patients receiving adalimumab.

Other serious infections seen in clinical trials include pneumonia, pyelonephritis, septic arthritis and septicaemia. Hospitalisation or fatal outcomes associated with infections have been reported.

### ***Tuberculosis***

Tuberculosis, including reactivation and new onset of tuberculosis, has been reported in patients receiving adalimumab. Reports included cases of pulmonary and extra-pulmonary (i.e. disseminated) tuberculosis.

Before initiation of therapy with ABRILADA, all patients must be evaluated for both active or inactive (“latent”) tuberculosis infection. This evaluation should include a detailed medical assessment of patient history of tuberculosis or possible previous exposure to people with active tuberculosis and previous and/or current immunosuppressive therapy. Appropriate screening tests (i.e. tuberculin skin test and chest X-ray) should be performed in all patients (local recommendations may apply). Prescribers are reminded of the risk of false negative tuberculin skin test results, especially in patients who are severely ill or immunocompromised.

If active tuberculosis is diagnosed, ABRILADA therapy must not be initiated (see section 4.3).

In all situations described below, the benefit/risk balance of therapy should be very carefully considered.

If latent tuberculosis is suspected, a physician with expertise in the treatment of tuberculosis should be consulted.

If latent tuberculosis is diagnosed, appropriate treatment must be started with anti-tuberculosis prophylaxis treatment before the initiation of ABRILADA, and in accordance with local recommendations.

Use of anti-tuberculosis prophylaxis treatment should also be considered before the initiation of ABRILADA in patients with several or significant risk factors for tuberculosis despite a negative test for tuberculosis and in patients with a past history of latent or active tuberculosis in whom an adequate course of treatment cannot be confirmed.

Despite prophylactic treatment for tuberculosis, cases of reactivated tuberculosis have occurred in patients treated with adalimumab. Some patients who have been successfully treated for active tuberculosis have redeveloped tuberculosis while being treated with adalimumab.

Patients should be instructed to seek medical advice if signs/symptoms suggestive of a tuberculosis infection (e.g., persistent cough, wasting/weight loss, low grade fever, listlessness)



occur during or after therapy with ABRILADA.

### ***Other opportunistic infections***

Opportunistic infections, including invasive fungal infections have been observed in patients receiving adalimumab. These infections have not consistently been recognised in patients taking TNF-antagonists and this has resulted in delays in appropriate treatment, sometimes resulting in fatal outcomes.

For patients who develop the signs and symptoms such as fever, malaise, weight loss, sweats, cough, dyspnoea, and/or pulmonary infiltrates or other serious systemic illness with or without concomitant shock an invasive fungal infection should be suspected and administration of ABRILADA should be promptly discontinued. Diagnosis and administration of empiric antifungal therapy in these patients should be made in consultation with a physician with expertise in the care of patients with invasive fungal infections.

### **Hepatitis B reactivation**

Reactivation of hepatitis B has occurred in patients receiving a TNF-antagonist including adalimumab, who are chronic carriers of this virus (i.e. surface antigen positive). Some cases have had a fatal outcome. Patients should be tested for hepatitis B virus (HBV) infection before initiating treatment with ABRILADA. For patients who test positive for hepatitis B infection, consultation with a physician with expertise in the treatment of hepatitis B is recommended.

Carriers of HBV who require treatment with ABRILADA should be closely monitored for signs and symptoms of active HBV infection throughout therapy and for several months following termination of therapy. Adequate data from treating patients who are carriers of HBV with anti-viral therapy in conjunction with TNF-antagonist therapy to prevent HBV reactivation are not available. In patients who develop HBV reactivation, ABRILADA should be stopped and effective anti-viral therapy with appropriate supportive treatment should be initiated.

### **Neurological events**

TNF-antagonists including adalimumab have been associated in rare instances with new onset or exacerbation of clinical symptoms and/or radiographic evidence of central nervous system

demyelinating disease including multiple sclerosis and optic neuritis, and peripheral demyelinating disease, including Guillain-Barré syndrome. Prescribers should exercise caution in considering the use of ABRILADA in patients with pre-existing or recent-onset central or peripheral nervous system demyelinating disorders; discontinuation of ABRILADA should be considered if any of these disorders develop. There is a known association between intermediate uveitis and central demyelinating disorders. Neurologic evaluation should be performed in patients with non-infectious intermediate uveitis prior to the initiation of ABRILADA therapy and regularly during treatment to assess for pre-existing or developing central demyelinating disorders.

### **Allergic reactions**

Serious allergic reactions associated with adalimumab were rare during clinical trials. Non-serious allergic reactions associated with adalimumab were uncommon during clinical trials. Reports of serious allergic reactions including anaphylaxis have been received following adalimumab administration. If an anaphylactic reaction or other serious allergic reaction occurs, administration of ABRILADA should be discontinued immediately and appropriate therapy initiated.

### **Malignancies and lymphoproliferative disorders**

In the controlled portions of clinical trials of TNF-antagonists, more cases of malignancies including lymphoma have been observed among patients receiving a TNF-antagonist compared with control patients. However, the occurrence was rare. In the post marketing setting, cases of leukaemia have been reported in patients treated with a TNF-antagonist. There is an increased background risk for lymphoma and leukaemia in rheumatoid arthritis patients with long-standing, highly active, inflammatory disease, which complicates the risk estimation. With the current knowledge, a possible risk for the development of lymphomas, leukaemia, and other malignancies in patients treated with a TNF-antagonist cannot be excluded.

Malignancies, some fatal, have been reported among children, adolescents and young adults (up to 22 years of age) treated with TNF-antagonists (initiation of therapy  $\leq$  18 years of age), including adalimumab in the post marketing setting. Approximately half the cases were lymphomas. The other cases represented a variety of different malignancies and included rare malignancies usually associated with immunosuppression. A risk for the development of malignancies in children and adolescents treated with TNF-antagonists cannot be excluded.

Rare post-marketing cases of hepatosplenic T-cell lymphoma have been identified in patients treated with adalimumab. This rare type of T-cell lymphoma has a very aggressive disease course and is usually fatal. Some of these hepatosplenic T-cell lymphomas with adalimumab have occurred in young adult patients on concomitant treatment with azathioprine or 6-mercaptopurine used for inflammatory bowel disease. The potential risk with the combination of azathioprine or 6-mercaptopurine and adalimumab should be carefully considered. A risk for the development of hepatosplenic T-cell lymphoma in patients treated with ABRILADA cannot be excluded (see section 4.8).

No studies have been conducted that include patients with a history of malignancy or in whom treatment with adalimumab is continued following development of malignancy. Thus additional caution should be exercised in considering adalimumab treatment of these patients (see section 4.8).

All patients, and in particular patients with a medical history of extensive immunosuppressant therapy or psoriasis patients with a history of psoralen plus ultraviolet-A light therapy (PUVA) treatment should be examined for the presence of non-melanoma skin cancer prior to and during treatment with ABRILADA. Melanoma and Merkel cell carcinoma have also been reported in patients treated with TNF-antagonists including adalimumab (see section 4.8).

In an exploratory clinical trial evaluating the use of another TNF-antagonist, infliximab, in patients with moderate to severe chronic obstructive pulmonary disease (COPD), more malignancies, mostly in the lung or head and neck, were reported in infliximab-treated patients compared with control patients. All patients had a history of heavy smoking. Therefore, caution should be exercised when using any TNF-antagonist in COPD patients, as well as in patients with increased risk for malignancy due to heavy smoking.

With current data it is not known if adalimumab treatment influences the risk for developing dysplasia or colon cancer. All patients with ulcerative colitis who are at increased risk for dysplasia or colon carcinoma (for example, patients with long-standing ulcerative colitis or primary sclerosing cholangitis), or who had a prior history of dysplasia or colon carcinoma should be screened for dysplasia at regular intervals before therapy and throughout their disease course. This evaluation should include colonoscopy and biopsies per local recommendations.

## **Haematologic reactions**

Rare reports of pancytopenia including aplastic anaemia have been reported with TNF-antagonists. Adverse events of the haematologic system, including medically significant cytopenia (e.g., thrombocytopenia, leukopenia) have been reported with adalimumab. All patients should be advised to seek immediate medical attention if they develop signs and symptoms suggestive of blood dyscrasias (e.g., persistent fever, bruising, bleeding, pallor) while on ABRILADA. Discontinuation of ABRILADA therapy should be considered in patients with confirmed significant haematologic abnormalities.

### **Vaccinations**

Similar antibody responses to the standard 23-valent pneumococcal vaccine and the influenza trivalent virus vaccination were observed in a study in 226 adult subjects with rheumatoid arthritis who were treated with adalimumab or placebo. No data are available on the secondary transmission of infection by live vaccines in patients receiving adalimumab.

It is recommended that paediatric patients, if possible, be brought up to date with all immunisations in agreement with current immunisation guidelines prior to initiating adalimumab therapy.

Patients on adalimumab may receive concurrent vaccinations, except for live vaccines. Administration of live vaccines (e.g., BCG vaccine) to infants exposed to adalimumab in utero is not recommended for 5 months following the mother's last adalimumab injection during pregnancy.

### **Congestive heart failure**

In a clinical trial with another TNF-antagonist worsening congestive heart failure and increased mortality due to congestive heart failure have been observed. Cases of worsening congestive heart failure have also been reported in patients receiving adalimumab. ABRILADA should be used with caution in patients with mild heart failure (NYHA class I/II). ABRILADA is contraindicated in moderate to severe heart failure (see section 4.3). Treatment with ABRILADA must be discontinued in patients who develop new or worsening symptoms of congestive heart failure.

## **Autoimmune processes**

Treatment with ABRILADA may result in the formation of autoimmune antibodies. The impact of long-term treatment with adalimumab on the development of autoimmune diseases is unknown. If a patient develops symptoms suggestive of a lupus-like syndrome following treatment with ABRILADA and is positive for antibodies against double-stranded DNA, further treatment with ABRILADA should not be given (see section 4.8).

## **Concurrent administration of biologic DMARDs or TNF-antagonists**

Serious infections were seen in clinical studies with concurrent use of anakinra and another TNF-antagonist, etanercept, with no added clinical benefit compared to etanercept alone. Because of the nature of the adverse events seen with the combination of etanercept and anakinra therapy, similar toxicities may also result from the combination of anakinra and other TNF-antagonists. Therefore, the combination of adalimumab and anakinra is not recommended (see section 4.5).

Concomitant administration of adalimumab with other biologic DMARDs (e.g., anakinra and abatacept) or other TNF-antagonists is not recommended based upon the possible increased risk for infections, including serious infections and other potential pharmacological interactions (see section 4.5).

## **Surgery**

There is limited safety experience of surgical procedures in patients treated with adalimumab. The long half-life of adalimumab should be taken into consideration if a surgical procedure is planned. A patient who requires surgery while on ABRILADA should be closely monitored for infections, and appropriate actions should be taken. There is limited safety experience in patients undergoing arthroplasty while receiving adalimumab.

## **Small bowel obstruction**

Failure to respond to treatment for Crohn's disease may indicate the presence of fixed fibrotic stricture that may require surgical treatment. Available data suggest that adalimumab does not worsen or cause strictures.

## **Elderly**

The frequency of serious infections among adalimumab-treated subjects over 65 years of age (3.7%) was higher than for those under 65 years of age (1.5%). Some of those had a fatal outcome. Particular attention regarding the risk for infection should be paid when treating the elderly.

## **Paediatric population**

See Vaccinations above.

### **4.5 Interaction with other medicinal products and other forms of interaction**

Adalimumab has been studied in rheumatoid arthritis, polyarticular juvenile idiopathic arthritis and psoriatic arthritis patients taking adalimumab as monotherapy and those taking concomitant methotrexate. Antibody formation was lower when adalimumab was given together with methotrexate in comparison with use as monotherapy. Administration of adalimumab without methotrexate resulted in increased formation of antibodies, increased clearance and reduced efficacy of adalimumab (see section 5.1). Although methotrexate reduced the apparent adalimumab clearance, the data do not suggest the need for dose adjustment of either adalimumab or methotrexate (see section 5.2).

The combination of ABRILADA and anakinra is not recommended (see section 4.4 Concurrent administration of biologic DMARDs or TNF-antagonists).

The combination of ABRILADA and abatacept is not recommended (see section 4.4 Concurrent administration of biologic DMARDs or TNF-antagonists).

A higher rate of serious infections has also been observed in patients with RA treated with rituximab who received subsequent treatment with a TNF blocker.

The use of live vaccines with ABRILADA should be avoided (see section 4.4).

The formation of CYP450 enzymes may be suppressed by increased levels of cytokines (e.g., TNF $\alpha$ , IL-6) during chronic inflammation. It is possible for a molecule that antagonizes cytokine

activity, such as adalimumab, to influence the formation of CYP450 enzymes. Upon initiation or discontinuation of ABRILADA in patients being treated with CYP450 substrates with a narrow therapeutic index, monitoring of the effect (e.g., warfarin) or drug concentration (e.g., cyclosporine or theophylline) is recommended and the individual dose of the drug product may be adjusted as needed.

## **4.6 Fertility, pregnancy and lactation**

### **Women of child-bearing potential**

Women of child-bearing potential should consider the use of adequate contraception to prevent pregnancy and continue its use for at least five months after the last ABRILADA treatment.

### **Pregnancy**

A large number (approximately 2100) of prospectively collected pregnancies exposed to adalimumab resulting in live birth with known outcomes, including more than 1500 exposed during the first trimester, does not indicate an increase in the rate of malformation in the newborn.

In a prospective cohort registry, 257 women with rheumatoid arthritis or Crohn's disease (CD) treated with adalimumab at least during the first trimester and 120 women with RA or CD not treated with adalimumab were enrolled. The primary endpoint was the birth prevalence of major birth defects. The rate of pregnancies ending with at least one live born infant with a major birth defect was 6/69 (8.7%) in the adalimumab-treated women with RA and 5/74 (6.8%) in the untreated women with RA (unadjusted OR 1.31, 95% CI 0.38-4.52) and 16/152 (10.5%) in the adalimumab-treated women with CD and 3/32 (9.4%) in the untreated women with CD (unadjusted OR 1.14, 95% CI 0.31-4.16). The adjusted OR (accounting for baseline differences) was 1.10 (95% CI 0.45-2.73) with RA and CD combined. There were no distinct differences between adalimumab-treated and untreated women for the secondary endpoints spontaneous abortions, minor birth defects, preterm delivery, birth size and serious or opportunistic infections and no stillbirths or malignancies were reported. The interpretation of data may be impacted due to methodological limitations of the study, including small sample size and non-randomised design.

In a developmental toxicity study conducted in monkeys, there was no indication of maternal

toxicity, embryotoxicity or teratogenicity. Preclinical data on postnatal toxicity of adalimumab are not available (see section 5.3).

Due to its inhibition of TNF $\alpha$ , adalimumab administered during pregnancy could affect normal immune responses in the newborn. Adalimumab should only be used during pregnancy if clearly needed.

Published data suggest that the risk of adverse pregnancy outcomes in women with rheumatoid arthritis or inflammatory bowel disease is associated with increased disease activity. Adverse pregnancy outcomes include preterm delivery (before 37 weeks of gestation), low birth weight (less than 2500 g) infants, and small for gestational age at birth.

Adalimumab may cross the placenta into the serum of infants born to women treated with adalimumab during pregnancy. Consequently, these infants may be at increased risk for infection.

In an independent clinical study conducted in ten pregnant women with inflammatory bowel disease treated with adalimumab, adalimumab concentrations were measured in maternal serum as well as in cord blood (n = 10) and infant serum (n = 8) on the day of birth. The last dose of adalimumab was given between 1 and 56 days prior to delivery. Adalimumab concentrations were 0.16-19.7  $\mu\text{g/mL}$  in cord blood, 4.28-17.7  $\mu\text{g/mL}$  in infant serum, and 0-16.1  $\mu\text{g/mL}$  in maternal serum. In all but one case, the cord blood level of adalimumab was higher than the maternal serum level, suggesting adalimumab actively crosses the placenta.

Administration of live vaccines (e.g., BCG vaccine) to infants exposed to adalimumab in utero is not recommended for 5 months following the mother's last adalimumab injection during pregnancy.

### **Breast-feeding**

Limited information from the published literature indicates that adalimumab is excreted in breast milk at very low concentrations with the presence of adalimumab in human milk at concentrations of 0.1% to 1% of the maternal serum level. Given orally, immunoglobulin G proteins undergo intestinal proteolysis and have poor bioavailability. No effects on the breast-fed newborns/infants are anticipated. Consequently, ABRILADA can be used during breast-feeding.



## **Fertility**

Preclinical data on fertility effects of adalimumab are not available.

### **4.7 Effects on ability to drive and use machines**

Adalimumab may have a minor influence on the ability to drive and use machines. Vertigo and visual impairment may occur following administration of ABRILADA (see section 4.8).

### **4.8 Undesirable effects**

#### **Summary of the safety profile**

Adalimumab was studied in 9,506 patients in pivotal controlled and open-label trials for up to 60 months or more. These trials included rheumatoid arthritis patients with short term and long standing disease, juvenile idiopathic arthritis (polyarticular juvenile idiopathic arthritis and enthesitis-related arthritis) as well as axial spondyloarthritis (ankylosing spondylitis and axial spondyloarthritis without radiographic evidence of AS), psoriatic arthritis, Crohn's disease, ulcerative colitis, psoriasis, hidradenitis suppurativa and uveitis patients. The pivotal controlled studies involved 6,089 patients receiving adalimumab and 3,801 patients receiving placebo or active comparator during the controlled period.

The proportion of patients who discontinued treatment due to adverse events during the double-blind, controlled portion of pivotal studies was 5.9% for patients taking adalimumab and 5.4% for control-treated patients.

The most commonly reported adverse reactions are infections (such as nasopharyngitis, upper respiratory tract infection and sinusitis), injection site reactions (erythema, itching, haemorrhage, pain or swelling), headache and musculoskeletal pain.

Serious adverse reactions have been reported for adalimumab. TNF-antagonists, such as adalimumab affect the immune system and their use may affect the body's defence against infection and cancer.

Fatal and life-threatening infections (including sepsis, opportunistic infections and TB), HBV

reactivation and various malignancies (including leukaemia, lymphoma and hepatosplenic T-cell lymphoma [HSTCL]) have also been reported with use of adalimumab.

Serious haematological, neurological and autoimmune reactions have also been reported. These include rare reports of pancytopenia, aplastic anaemia, central and peripheral demyelinating events and reports of lupus, lupus-related conditions and Stevens-Johnson syndrome.

### Paediatric population

In general, the adverse events in paediatric patients were similar in frequency and type to those seen in adult patients.

### Tabulated list of adverse reactions

The following list of adverse reactions is based on experience from clinical trials and on postmarketing experience and are displayed by system organ class and presented in order of decreasing seriousness in Table 6 below. An asterisk (\*) appears in the SOC column if further information is found elsewhere in sections 4.3, 4.4 or 4.8.

**Table 6. Adverse Drug Reactions**

System Organ Class	Adverse Drug Reactions
Infections and infestations*	Systemic infections (including sepsis, candidiasis and influenza), Neurological infections (including viral meningitis), Opportunistic infections and tuberculosis (including coccidioidomycosis, histoplasmosis and mycobacterium avium complex infection), Bacterial infections, Respiratory tract infections (including lower and upper respiratory tract infection, pneumonia, sinusitis, pharyngitis, nasopharyngitis and pneumonia herpes viral), Urinary tract infections (including pyelonephritis), Intestinal infections (including gastroenteritis viral), Diverticulitis, <sup>†</sup> Joint infections, Fungal infections, Skin and soft tissue infections (including paronychia, cellulitis, impetigo, necrotising fasciitis and herpes zoster), Reproductive tract infections (including vulvovaginal mycotic infection), Ear infections, Eye infections, Oral infections (including herpes

System Organ Class	Adverse Drug Reactions
	simplex, oral herpes and tooth infections)
Neoplasms benign, malignant and unspecified (including cysts and polyps)*	Lymphoma,** Hepatosplenic T-cell lymphoma,† Leukaemia,† Solid organ neoplasm (including breast cancer, lung neoplasm and thyroid neoplasm), Melanoma,** Merkel cell carcinoma (neuroendocrine carcinoma of the skin),† Skin cancer excluding melanoma (including basal cell carcinoma and squamous cell carcinoma), Benign neoplasm
Blood and lymphatic system disorders*	Pancytopenia, Leukopenia (including neutropenia and agranulocytosis), Anaemia, Thrombocytopenia, Leucocytosis, Idiopathic thrombocytopenic purpura
Immune system disorders*	Anaphylaxis,† Sarcoidosis,† Vasculitis, Hypersensitivity, Allergies (including seasonal allergy)
Metabolism and nutrition disorders	Hypokalaemia, Hyperglycaemia, Hypocalcaemia, Blood sodium abnormal, Hypophosphatemia, Lipids increased, Uric acid increased, Dehydration
Psychiatric disorders	Mood alterations (including depression), Anxiety, Insomnia
Nervous system disorders*	Demyelinating disorders (e.g., multiple sclerosis, Guillain-Barré syndrome, and optic neuritis),† Cerebrovascular accident,† Nerve root compression, Neuropathy, Paraesthesias (including hypoesthesia), Headache, Migraine, Tremor
Eye disorders	Visual impairment, Diplopia, Eye swelling, Blepharitis, Conjunctivitis
Ear and labyrinth disorders	Deafness, Vertigo, Tinnitus
Cardiac disorders*	Cardiac arrest, Myocardial infarction,† Congestive heart failure, Arrhythmia, Tachycardia

<b>System Organ Class</b>	<b>Adverse Drug Reactions</b>
Vascular disorders	Aortic aneurysm, Vascular arterial occlusion, Hypertension, Thrombophlebitis, Haematoma, Flushing
Respiratory, thoracic and mediastinal disorders	Pulmonary embolism, <sup>†</sup> Pleural effusion, <sup>†</sup> Pulmonary fibrosis, <sup>†</sup> Interstitial lung disease, Chronic obstructive pulmonary disease, Asthma, Pneumonitis, Dyspnoea, Cough
Gastrointestinal disorders	Intestinal perforation, <sup>†</sup> GI haemorrhage, Pancreatitis, Face oedema, Sicca syndrome, Abdominal pain, Dysphagia, Dyspepsia, Gastroesophageal reflux disease, Nausea and vomiting
Hepatobiliary disorders*	Liver failure, <sup>†</sup> Hepatitis, Reactivation of hepatitis B, <sup>†</sup> Autoimmune hepatitis, <sup>†</sup> Cholecystitis and cholelithiasis, Hepatic steatosis, Bilirubin increased, Elevated liver enzymes
Skin and subcutaneous tissue disorders	Stevens-Johnson syndrome, <sup>†</sup> Angioedema, <sup>†</sup> Cutaneous vasculitis, <sup>†</sup> Erythema multiforme, <sup>†</sup> Worsening of symptoms of dermatomyositis, <sup>†</sup> Worsening or new onset of psoriasis (including palmoplantar pustular psoriasis), <sup>†</sup> Urticaria, Alopecia, <sup>†</sup> Dermatitis (including eczema), Rash (including exfoliative rash), Lichenoid skin reaction, <sup>†</sup> Pruritus, Bruising (including purpura), Alopecia, <sup>†</sup> Onychoclasia, Hyperhidrosis, Night sweats, Scar
Musculoskeletal and connective tissue disorders	Systemic lupus erythematosus, Lupus-like syndrome, <sup>†</sup> Rhabdomyolysis, Arthritis, Arthralgia, Musculoskeletal pain, Muscle spasms (including blood creatine phosphokinase increased)
Renal and urinary disorders	Renal impairment, Haematuria, Nocturia
Reproductive system and	Erectile dysfunction

<b>System Organ Class</b>	<b>Adverse Drug Reactions</b>
breast disorders	
General disorders and administration site conditions	Chest pain, Oedema, Inflammation, Pyrexia, <sup>†</sup> Injection site reaction (including injection site erythema)
Investigations*	Coagulation and bleeding disorders (including activated partial thromboplastin time prolonged), Autoantibody test positive (including double stranded DNA antibody), Blood lactate dehydrogenase increased
Injury, poisoning and procedural complications	Impaired healing

\* further information is found elsewhere in sections 4.3, 4.4 or 4.8

\*\* including open-label extension studies

† including spontaneous reporting data

### **Hidradenitis suppurativa**

The safety profile for patients with HS treated with adalimumab weekly was consistent with the known safety profile of adalimumab.

### **Uveitis**

The safety profile for patients with uveitis treated with adalimumab every other week was consistent with the known safety profile of adalimumab.

### **Description of selected adverse reactions**

#### ***Injection site reactions***

In the pivotal controlled trials in adults and children, 12.9% of patients treated with adalimumab developed injection site reactions (erythema and/or itching, haemorrhage, pain or swelling),

compared to 7.2% of patients receiving placebo or active control. Injection site reactions generally did not necessitate discontinuation of the medicinal product.

### ***Infections***

In the pivotal controlled trials in adults and children, the rate of infection was 1.51 per patient year in the adalimumab-treated patients and 1.46 per patient year in the placebo and active control-treated patients. The infections consisted primarily of nasopharyngitis, upper respiratory tract infection, and sinusitis. Most patients continued on adalimumab after the infection resolved.

The incidence of serious infections was 0.04 per patient year in adalimumab-treated patients and 0.03 per patient year in placebo and active control-treated patients.

In controlled and open-label adult and paediatric studies with adalimumab, serious infections (including fatal infections, which occurred rarely) have been reported, which include reports of tuberculosis (including miliary and extra-pulmonary locations) and invasive opportunistic infections (e.g., disseminated or extrapulmonary histoplasmosis, blastomycosis, coccidioidomycosis, pneumocystis, candidiasis, aspergillosis and listeriosis). Most of the cases of tuberculosis occurred within the first eight months after initiation of therapy and may reflect recrudescence of latent disease.

### ***Malignancies and lymphoproliferative disorders***

No malignancies were observed in 249 paediatric patients with an exposure of 655.6 patient years during adalimumab trials in patients with juvenile idiopathic arthritis (polyarticular juvenile idiopathic arthritis and enthesitis-related arthritis). In addition, no malignancies were observed in 192 paediatric patients with an exposure of 498.1 patient years during adalimumab trials in paediatric patients with Crohn's disease. No malignancies were observed in 77 paediatric patients with an exposure of 80.0 patient years during an adalimumab trial in paediatric patients with chronic plaque psoriasis. No malignancies were observed in 60 paediatric patients with an exposure of 58.4 patient years during a adalimumab trial in paediatric patients with uveitis.

During the controlled portions of pivotal adalimumab trials in adults of at least 12 weeks in duration in patients with moderately to severely active rheumatoid arthritis, ankylosing spondylitis, axial spondyloarthritis without radiographic evidence of AS, psoriatic arthritis, psoriasis,

hidradenitis suppurativa, Crohn's disease, ulcerative colitis and uveitis, malignancies, other than lymphoma and non-melanoma skin cancer, were observed at a rate (95% confidence interval) of 6.8 (4.4, 10.5) per 1,000 patient-years among 5,291 adalimumab-treated patients vs a rate of 6.3 (3.4, 11.8) per 1,000 patient-years among 3,444 control patients (median duration of treatment was 4.0 months for adalimumab and 3.8 months for control-treated patients). The rate (95% confidence interval) of non-melanoma skin cancers was 8.8 (6.0, 13.0) per 1,000 patient-years among adalimumab-treated patients and 3.2 (1.3, 7.6) per 1,000 patient-years among control patients. Of these skin cancers, squamous cell carcinomas occurred at rates (95% confidence interval) of 2.7 (1.4, 5.4) per 1,000 patient-years among adalimumab-treated patients and 0.6 (0.1, 4.5) per 1,000 patient-years among control patients. The rate (95% confidence interval) of lymphomas was 0.7 (0.2, 2.7) per 1,000 patient-years among adalimumab-treated patients and 0.6 (0.1, 4.5) per 1,000 patient-years among control patients.

When combining controlled portions of these trials and ongoing and completed open-label extension studies with a median duration of approximately 3.3 years including 6,427 patients and over 26,439 patient-years of therapy, the observed rate of malignancies, other than lymphoma and non-melanoma skin cancers is approximately 8.5 per 1,000 patient years. The observed rate of non-melanoma skin cancers is approximately 9.6 per 1,000 patient years, and the observed rate of lymphomas is approximately 1.3 per 1,000 patient years.

In post-marketing experience from January 2003 to December 2010, predominantly in patients with rheumatoid arthritis, the reported rate of malignancies is approximately 2.7 per 1,000 patient treatment years. The reported rates for non-melanoma skin cancers and lymphomas are approximately 0.2 and 0.3 per 1,000 patient treatment years, respectively (see section 4.4).

Rare post-marketing cases of hepatosplenic T-cell lymphoma have been reported in patients treated with adalimumab (see section 4.4).

### ***Autoantibodies***

Patients had serum samples tested for autoantibodies at multiple time points in rheumatoid arthritis studies I-V. In these trials, 11.9% of patients treated with adalimumab and 8.1% of placebo and active control-treated patients that had negative baseline anti-nuclear antibody titres reported positive titres at Week 24. Two patients out of 3,441 treated with adalimumab in all rheumatoid arthritis and psoriatic arthritis studies developed clinical signs suggestive of new-onset

lupus-like syndrome. The patients improved following discontinuation of therapy. No patients developed lupus nephritis or central nervous system symptoms.

### ***Hepato-biliary events***

In controlled Phase 3 trials of adalimumab in patients with rheumatoid arthritis and psoriatic arthritis with a control period duration ranging from 4 to 104 weeks, ALT elevations  $\geq 3$  x ULN occurred in 3.7% of adalimumab-treated patients and 1.6% of control-treated patients.

In controlled Phase 3 trials of adalimumab in patients with polyarticular juvenile idiopathic arthritis who were 4 to 17 years and enthesitis-related arthritis who were 6 to 17 years, ALT elevations  $\geq 3$  x ULN occurred in 6.1% of adalimumab-treated patients and 1.3% of control-treated patients. Most ALT elevations occurred with concomitant methotrexate use. No ALT elevations  $\geq 3$  x ULN occurred in the Phase 3 trial of adalimumab in patients with polyarticular juvenile idiopathic arthritis who were 2 to <4 years.

In controlled Phase 3 trials of adalimumab in patients with Crohn's disease and ulcerative colitis with a control period ranging from 4 to 52 weeks. ALT elevations  $\geq 3$  x ULN occurred in 0.9% of adalimumab-treated patients and 0.9% of controlled-treated patients.

In the Phase 3 trial of adalimumab in patients with paediatric Crohn's disease which evaluated efficacy and safety of two body weight adjusted maintenance dose regimens following body weight adjusted induction therapy up to 52 weeks of treatment, ALT elevations  $\geq 3$  x ULN occurred in 2.6% (5/192) of patients of whom 4 were receiving concomitant immunosuppressants at baseline.

In controlled Phase 3 trials of adalimumab in patients with plaque Psoriasis with a control period duration ranging from 12 to 24 weeks, ALT elevations  $\geq 3$  x ULN occurred in 1.8% of adalimumab-treated patients and 1.8% of control-treated patients.

No ALT elevations  $\geq 3$  X ULN occurred in the Phase 3 trial of adalimumab in paediatric patients with plaque psoriasis.

In controlled trials of adalimumab (initial doses of 160 mg at Week 0 and 80 mg at Week 2, followed by 40 mg every week starting at Week 4), in patients with hidradenitis suppurativa with a



control period duration ranging from 12 to 16 weeks, ALT elevations  $\geq 3$  x ULN occurred in 0.3% of adalimumab-treated patients and 0.6% of control-treated patients.

In controlled trials of adalimumab (initial doses of 80 mg at Week 0 followed by 40 mg every other week starting at Week 1) in adult patients with uveitis up to 80 weeks with a median exposure of 166.5 days and 105.0 days in adalimumab-treated and control-treated patients, respectively, ALT elevations  $\geq 3$  x ULN occurred in 2.4% of adalimumab-treated patients and 2.4% of control-treated patients.

Across all indications in clinical trials patients with raised ALT were asymptomatic and in most cases elevations were transient and resolved on continued treatment. However, there have also been post-marketing reports of liver failure as well as less severe liver disorders that may precede liver failure, such as hepatitis including autoimmune hepatitis in patients receiving adalimumab.

#### **Concurrent treatment with azathioprine/6-mercaptopurine**

In adult Crohn's disease studies, higher incidences of malignant and serious infection-related adverse events were seen with the combination of adalimumab and azathioprine/6-mercaptopurine compared with adalimumab alone.

#### **ABRILADA Comparative Clinical Studies**

The results of the ABRILADA clinical trial program support comparable safety profiles for ABRILADA and Humira (see section 5.1). The safety after transition from Humira to ABRILADA was similar to that with continuous treatment with either ABRILADA or Humira.

#### **4.9 Overdose**

No dose-limiting toxicity was observed during clinical trials. The highest dose level evaluated has been multiple intravenous doses of 10 mg/kg, which is approximately 15 times the recommended dose.

### **5. Pharmacological Properties**

#### **5.1 Pharmacodynamic properties**

Pharmacotherapeutic group: Immunosuppressants, Tumour Necrosis Factor alpha (TNF- $\alpha$ ) inhibitors.

### **Mechanism of action**

Adalimumab binds specifically to TNF and neutralises the biological function of TNF by blocking its interaction with the p55 and p75 cell surface TNF receptors.

Adalimumab also modulates biological responses that are induced or regulated by TNF, including changes in the levels of adhesion molecules responsible for leukocyte migration (ELAM-1, VCAM-1, and ICAM-1 with an IC<sub>50</sub> of 0.1-0.2 nM).

The relationship between these pharmacodynamic activities and the mechanism(s) by which adalimumab exerts its clinical effects is unknown.

### **Pharmacodynamic effects**

After treatment with adalimumab, a rapid decrease in levels of acute phase reactants of inflammation (C-reactive protein (CRP) and erythrocyte sedimentation rate (ESR)) and serum cytokines (IL-6) was observed, compared to baseline in patients with rheumatoid arthritis. Serum levels of matrix metalloproteinases (MMP-1 and MMP-3) that produce tissue remodelling responsible for cartilage destruction were also decreased after adalimumab administration. Patients treated with adalimumab usually experienced improvement in haematological signs of chronic inflammation.

A rapid decrease in CRP levels was also observed in patients with polyarticular juvenile idiopathic arthritis, Crohn's disease, ulcerative colitis and hidradenitis suppurativa after treatment with adalimumab. In patients with Crohn's disease, a reduction of the number of cells expressing inflammatory markers in the colon including a significant reduction of expression of TNF $\alpha$  was seen. Endoscopic studies in intestinal mucosa have shown evidence of mucosal healing in adalimumab-treated patients.

### ***ABRILADA biosimilarity (pharmacodynamic effects)***

In Study B5381002, serum high sensitivity CRP (hs-CRP) was assessed as the PD biomarker and a component of the American College of Rheumatology (ACR) and disease activity score (DAS) assessments. Consistent with previous findings for TNF $\alpha$  inhibitors, mean serum hs-CRP concentrations decreased acutely in response to ABRILADA and Humira-EU (EU reference product) treatments, and remained suppressed through Week 26. In the ITT population, mean changes from baseline (standard deviation) in hs-CRP were -11.1 (21.92) and -13.6 (26.47) mg/L at Week 26 for the ABRILADA and Humira-EU treatments, respectively, and were similar between the treatment arms over time.

## **Clinical efficacy and safety**

### ***Rheumatoid arthritis***

Adalimumab was evaluated in over 3,000 patients in all rheumatoid arthritis clinical trials. The efficacy and safety of adalimumab were assessed in five randomised, double-blind and well-controlled studies. Some patients were treated for up to 120 months duration.

RA study I evaluated 271 patients with moderately to severely active rheumatoid arthritis who were  $\geq$  18 years old, had failed therapy with at least one disease-modifying, anti-rheumatic drug and had insufficient efficacy with methotrexate at doses of 12.5 to 25 mg (10 mg if methotrexate-intolerant) every week and whose methotrexate dose remained constant at 10 to 25 mg every week. Doses of 20, 40 or 80 mg of adalimumab or placebo were given every other week for 24 weeks.

RA study II evaluated 544 patients with moderately to severely active rheumatoid arthritis who were  $\geq$  18 years old and had failed therapy with at least one disease-modifying, anti-rheumatic drugs. Doses of 20 or 40 mg of adalimumab were given by subcutaneous injection every other week with placebo on alternative weeks or every week for 26 weeks; placebo was given every week for the same duration. No other disease-modifying anti-rheumatic drugs were allowed.

RA study III evaluated 619 patients with moderately to severely active rheumatoid arthritis who were  $\geq$  18 years old, and who had an ineffective response to methotrexate at doses of 12.5 to 25 mg or have been intolerant to 10 mg of methotrexate every week. There were three groups in this study. The first received placebo injections every week for 52 weeks. The second received 20 mg of adalimumab every week for 52 weeks. The third group received 40 mg of adalimumab

every other week with placebo injections on alternate weeks. Upon completion of the first 52 weeks, 457 patients enrolled in an open-label extension phase in which 40 mg of adalimumab/MTX was administered every other week up to 10 years.

RA study IV primarily assessed safety in 636 patients with moderately to severely active rheumatoid arthritis who were  $\geq 18$  years old. Patients were permitted to be either disease-modifying, anti-rheumatic drug-naïve or to remain on their pre-existing rheumatologic therapy provided that therapy was stable for a minimum of 28 days. These therapies include methotrexate, leflunomide, hydroxychloroquine, sulfasalazine and/or gold salts. Patients were randomised to 40 mg of adalimumab or placebo every other week for 24 weeks.

RA study V evaluated 799 methotrexate-naïve, adult patients with moderate to severely active early rheumatoid arthritis (mean disease duration less than 9 months). This study evaluated the efficacy of adalimumab 40 mg every other week/methotrexate combination therapy, adalimumab 40 mg every other week monotherapy and methotrexate monotherapy in reducing the signs and symptoms and rate of progression of joint damage in rheumatoid arthritis for 104 weeks. Upon completion of the first 104 weeks, 497 patients enrolled in an open-label extension phase in which 40 mg of adalimumab was administered every other week up to 10 years.

The primary end point in RA studies I, II and III and the secondary endpoint in RA study IV was the percent of patients who achieved an ACR 20 response at Week 24 or 26. The primary endpoint in RA study V was the percent of patients who achieved an ACR 50 response at Week 52. RA studies III and V had an additional primary endpoint at 52 weeks of retardation of disease progression (as detected by X-ray results). RA study III also had a primary endpoint of changes in quality of life.

### ACR response

The percent of adalimumab-treated patients achieving ACR 20, 50 and 70 responses was consistent across RA studies I, II and III. The results for the 40 mg every other week dose are summarised in Table 7.

**Table 7. ACR Responses in Placebo-Controlled Trials (Percent of Patients)**

Response	RA Study I <sup>a,**</sup>		RA Study II <sup>a,**</sup>		RA Study III <sup>a,**</sup>	
	Placebo/ MTX n = 60	Adalimumab <sup>b</sup> / MTX n = 63	Placebo n = 110	Adalimumab <sup>b</sup> n = 113	Placebo/ MTX n = 200	Adalimumab <sup>b</sup> / MTX n = 207
ACR 20						
6 months	13.3%	65.1%	19.1%	46.0%	29.5%	63.3%
12 months	NA	NA	NA	NA	24.0%	58.9%
ACR 50						
6 months	6.7%	52.4%	8.2%	22.1%	9.5%	39.1%
12 months	NA	NA	NA	NA	9.5%	41.5%
ACR 70						
6 months	3.3%	23.8%	1.8%	12.4%	2.5%	20.8%
12 months	NA	NA	NA	NA	4.5%	23.2%

Abbreviations: ACR=American College of Rheumatology; MTX=methotrexate; RA=rheumatoid arthritis.

\*\* p < 0.01, adalimumab vs placebo.

<sup>a</sup> RA study I at 24 weeks, RA study II at 26 weeks, and RA study III at 24 and 52 weeks.

<sup>b</sup> 40 mg adalimumab administered every other week.

In RA studies I-IV, all individual components of the ACR response criteria (number of tender and swollen joints, physician and patient assessment of disease activity and pain, disability index (HAQ) scores and CRP (mg/dL) values) improved at 24 or 26 weeks compared to placebo. In RA study III, these improvements were maintained throughout 52 weeks.

In the open-label extension for RA study III, most patients who were ACR responders maintained response when followed for up to 10 years. Of 207 patients who were randomised to adalimumab 40 mg every other week, 114 patients continued on adalimumab 40 mg every other week for 5 years. Among those, 86 patients (75.4%) had ACR 20 responses; 72 patients (63.2%) had ACR 50 responses; and 41 patients (36%) had ACR 70 responses. Of 207 patients, 81 patients continued on adalimumab 40 mg every other week for 10 years. Among those, 64 patients (79.0%) had ACR 20 responses; 56 patients (69.1%) had ACR 50 responses; and 43 patients (53.1%) had ACR 70 responses.

In RA study IV, the ACR 20 response of patients treated with adalimumab plus standard of care was statistically significantly better than patients treated with placebo plus standard of care

( $p < 0.001$ ).

In RA studies I-IV, adalimumab-treated patients achieved statistically significant ACR 20 and 50 responses compared to placebo as early as one to two weeks after initiation of treatment.

In RA study V with early rheumatoid arthritis patients who were methotrexate naïve, combination therapy with adalimumab and methotrexate led to faster and significantly greater ACR responses than methotrexate monotherapy and adalimumab monotherapy at Week 52 and responses were sustained at Week 104 (see Table 8).

**Table 8. ACR Responses in RA Study V (Percent of Patients)**

Response	MTX n = 257	Adalimumab n = 274	Adalimumab/ MTX n = 268	P-value <sup>a</sup>	P-value <sup>b</sup>	P-value <sup>c</sup>
ACR 20						
Week 52	62.6%	54.4%	72.8%	0.013	< 0.001	0.043
Week 104	56.0%	49.3%	69.4%	0.002	< 0.001	0.140
ACR 50						
Week 52	45.9%	41.2%	61.6%	< 0.001	< 0.001	0.317
Week 104	42.8%	36.9%	59.0%	< 0.001	< 0.001	0.162
ACR 70						
Week 52	27.2%	25.9%	45.5%	< 0.001	< 0.001	0.656
Week 104	28.4%	28.1%	46.6%	< 0.001	< 0.001	0.864

Abbreviations: ACR=American College of Rheumatology; MTX=methotrexate; RA=rheumatoid arthritis.

- <sup>a</sup>. P-value is from the pairwise comparison of methotrexate monotherapy and adalimumab/methotrexate combination therapy using the Mann-Whitney U test.
- <sup>b</sup>. P-value is from the pairwise comparison of adalimumab monotherapy and adalimumab/methotrexate combination therapy using the Mann-Whitney U test.
- <sup>c</sup>. P-value is from the pairwise comparison of adalimumab monotherapy and methotrexate monotherapy using the Mann-Whitney U test.

In the open-label extension for RA study V, ACR response rates were maintained when followed for up to 10 years. Of 542 patients who were randomised to adalimumab 40 mg every other week, 170 patients continued on adalimumab 40 mg every other week for 10 years. Among those,

154 patients (90.6%) had ACR 20 responses; 127 patients (74.7%) had ACR 50 responses; and 102 patients (60.0%) had ACR 70 responses.

At Week 52, 42.9% of patients who received adalimumab/methotrexate combination therapy achieved clinical remission (DAS28 (CRP) < 2.6) compared to 20.6% of patients receiving methotrexate monotherapy and 23.4% of patients receiving adalimumab monotherapy.

Adalimumab/methotrexate combination therapy was clinically and statistically superior to methotrexate ( $p < 0.001$ ) and adalimumab monotherapy ( $p < 0.001$ ) in achieving a low disease state in patients with recently diagnosed moderate to severe rheumatoid arthritis. The response for the two monotherapy arms was similar ( $p = 0.447$ ). Of 342 subjects originally randomised to adalimumab monotherapy or adalimumab/methotrexate combination therapy who entered the open-label extension study, 171 subjects completed 10 years of adalimumab treatment. Among those, 109 subjects (63.7%) were reported to be in remission at 10 years.

#### Radiographic response

In RA study III, where adalimumab-treated patients had a mean duration of rheumatoid arthritis of approximately 11 years, structural joint damage was assessed radiographically and expressed as change in modified Total Sharp Score (mTSS) and its components, the erosion score and joint space narrowing score. Adalimumab/methotrexate patients demonstrated significantly less radiographic progression than patients receiving methotrexate alone at 6 and 12 months (see Table 9).

In the open-label extension of RA Study III, the reduction in rate of progression of structural damage is maintained for 8 and 10 years in a subset of patients. At 8 years, 81 of 207 patients originally treated with 40 mg adalimumab every other week were evaluated radiographically. Among those, 48 patients showed no progression of structural damage defined by a change from baseline in the mTSS of 0.5 or less. At 10 years, 79 of 207 patients originally treated with 40 mg adalimumab every other week were evaluated radiographically. Among those, 40 patients showed no progression of structural damage defined by a change from baseline in the mTSS of 0.5 or less.

**Table 9. Radiographic Mean Changes Over 12 Months in RA Study III**

	<b>Placebo/MTX</b>	<b>Adalimumab/MTX 40 mg every</b>	<b>Placebo/MTX-Adalimumab/MTX (95% Confidence Interval*)</b>	<b>P-value</b>

		<b>other week</b>		
Total Sharp Score	2.7	0.1	2.6 (1.4, 3.8)	< 0.001 <sup>†</sup>
Erosion Score	1.6	0.0	1.6 (0.9, 2.2)	< 0.001
JSN Score	1.0	0.1	0.9 (0.3, 1.4)	0.002

Abbreviations: JSN=Joint Space Narrowing; MTX=methotrexate.

\* 95% confidence intervals for the differences in change scores between methotrexate and adalimumab.

† Based on rank analysis.

In RA study V, structural joint damage was assessed radiographically and expressed as change in modified Total Sharp Score (see Table 10).

**Table 10. Radiographic Mean Changes at Week 52 in RA Study V**

	<b>MTX n = 257 (95% confidence interval)</b>	<b>Adalimumab n = 274 (95% confidence interval)</b>	<b>Adalimumab/MTX n = 268 (95% confidence interval)</b>	<b>P-value<sup>a</sup></b>	<b>P-value<sup>b</sup></b>	<b>P-value<sup>c</sup></b>
Total Sharp Score	5.7 (4.2-7.3)	3.0 (1.7-4.3)	1.3 (0.5-2.1)	< 0.001	0.0020	< 0.001
Erosion Score	3.7 (2.7-4.7)	1.7 (1.0-2.4)	0.8 (0.4-1.2)	< 0.001	0.0082	< 0.001
JSN Score	2.0 (1.2-2.8)	1.3 (0.5-2.1)	0.5 (0-1.0)	< 0.001	0.0037	0.151

Abbreviations: JSN=Joint Space Narrowing; MTX=methotrexate.

<sup>a</sup> P-value is from the pairwise comparison of methotrexate monotherapy and adalimumab/methotrexate combination therapy using the Mann-Whitney U test.

<sup>b</sup> P-value is from the pairwise comparison of adalimumab monotherapy and adalimumab/methotrexate combination therapy using the Mann-Whitney U test.

<sup>c</sup> P-value is from the pairwise comparison of adalimumab monotherapy and methotrexate monotherapy using the Mann-Whitney U test.



Following 52 weeks and 104 weeks of treatment, the percentage of patients without progression (change from baseline in modified Total Sharp Score  $\leq 0.5$ ) was significantly higher with adalimumab/methotrexate combination therapy (63.8% and 61.2% respectively) compared to methotrexate monotherapy (37.4% and 33.5% respectively,  $p < 0.001$ ) and adalimumab monotherapy (50.7%,  $p < 0.002$  and 44.5%,  $p < 0.001$  respectively).

In the open-label extension of RA study V, the mean change from baseline at Year 10 in the modified Total Sharp Score was 10.8, 9.2 and 3.9 in patients originally randomised to methotrexate monotherapy, adalimumab monotherapy and adalimumab/methotrexate combination therapy, respectively. The corresponding proportions of patients with no radiographic progression were 31.3%, 23.7% and 36.7% respectively.

### Quality of life and physical function

Health-related quality of life and physical function were assessed using the disability index of the Health Assessment Questionnaire (HAQ) in the four original adequate and well-controlled trials, which was a pre-specified primary endpoint at Week 52 in RA study III. All doses/schedules of adalimumab in all four studies showed statistically significantly greater improvement in the disability index of the HAQ from baseline to Month 6 compared to placebo and in RA study III the same was seen at Week 52. Results from the Short Form Health Survey (SF 36) for all doses/schedules of adalimumab in all four studies support these findings, with statistically significant physical component summary (PCS) scores, as well as statistically significant pain and vitality domain scores for the 40 mg every other week dose. A statistically significant decrease in fatigue as measured by functional assessment of chronic illness therapy (FACIT) scores was seen in all three studies in which it was assessed (RA studies I, III, IV).

In RA study III, most subjects who achieved improvement in physical function and continued treatment maintained improvement through Week 520 (120 months) of open-label treatment. Improvement in quality of life was measured up to Week 156 (36 months) and improvement was maintained through that time.

In RA study V, the improvement in the HAQ disability index and the physical component of the SF 36 showed greater improvement ( $p < 0.001$ ) for adalimumab/methotrexate combination therapy vs methotrexate monotherapy and adalimumab monotherapy at Week 52, which was maintained through Week 104. Among the 250 subjects who completed the open-label extension study,

improvements in physical function were maintained through 10 years of treatment.

### ***Juvenile idiopathic arthritis (JIA)***

#### Polyarticular juvenile idiopathic arthritis (pJIA)

The safety and efficacy of adalimumab was assessed in two studies (pJIA I and II) in children with active polyarticular or polyarticular course juvenile idiopathic arthritis, who had a variety of JIA onset types (most frequently rheumatoid-factor negative or positive polyarthritis and extended oligoarthritis).

#### *pJIA I*

The safety and efficacy of adalimumab were assessed in a multicentre, randomised, double-blind, parallel-group study in 171 children (4-17 years old) with polyarticular JIA. In the open-label lead in phase (OL-LI) patients were stratified into two groups, MTX (methotrexate)-treated or non-MTX-treated. Patients who were in the non-MTX stratum were either naïve to or had been withdrawn from MTX at least two weeks prior to study drug administration. Patients remained on stable doses of NSAIDs and or prednisone ( $\leq 0.2$  mg/kg/day or 10 mg/day maximum). In the OL-LI phase all patients received 24 mg/m<sup>2</sup> up to a maximum of 40 mg adalimumab every other week for 16 weeks. The distribution of patients by age and minimum, median and maximum dose received during the OL-LI phase is presented in Table 11.

**Table 11. Distribution of Patients by Age and Adalimumab Dose Received During the OL-LI Phase**

<b>Age Group</b>	<b>Number of patients at Baseline n (%)</b>	<b>Minimum, median and maximum dose</b>
4 to 7 years	31 (18.1)	10, 20 and 25 mg
8 to 12 years	71 (41.5)	20, 25 and 40 mg
13 to 17 years	69 (40.4)	25, 40 and 40 mg

Abbreviation: OL-LI=open-label lead in.

Patients demonstrating a Paediatric ACR 30 response at Week 16 were eligible to be randomised into the double-blind phase and received either adalimumab 24 mg/m<sup>2</sup> up to a maximum of

40 mg, or placebo every other week for an additional 32 weeks or until disease flare. Disease flare criteria were defined as a worsening of  $\geq 30\%$  from baseline in  $\geq 3$  of 6 Paediatric ACR core criteria,  $\geq 2$  active joints, and improvement of  $> 30\%$  in no more than 1 of the 6 criteria. After 32 weeks or at disease flare, patients were eligible to enroll into the open-label extension phase.

**Table 12. Ped ACR 30 Responses in the JIA study**

Stratum	MTX		Without MTX	
<b>Phase</b>				
OL-LI 16 weeks				
Ped ACR 30 response (n/N)	94.1% (80/85)		74.4% (64/86)	
<b>Efficacy Outcomes</b>				
<b>Double-Blind 32 weeks</b>	<b>Adalimumab / MTX (N = 38)</b>	<b>Placebo / MTX (N = 37)</b>	<b>Adalimumab (N = 30)</b>	<b>Placebo (N = 28)</b>
Disease flares at the end of 32 weeks <sup>a</sup> (n/N)	36.8% (14/38)	64.9% (24/37) <sup>b</sup>	43.3% (13/30)	71.4% (20/28) <sup>c</sup>
Median time to disease flare	>32 weeks	20 weeks	>32 weeks	14 weeks

Abbreviations: ACR=American College of Rheumatology; JIA=juvenile idiopathic arthritis; MTX=methotrexate; OL-LI=open-label lead in.

<sup>a</sup> Ped ACR 30/50/70 responses Week 48 significantly greater than those of placebo treated patients.

<sup>b</sup> p = 0.015.

<sup>c</sup> p = 0.031.

Amongst those who responded at Week 16 (n = 144), the Paediatric ACR 30/50/70/90 responses were maintained for up to six years in the open-label extension (OLE) phase in patients who received adalimumab throughout the study. Over all 19 subjects, of which 11 of the baseline age group 4 to 12 and 8 of the baseline age group 13 to 17 years were treated 6 years or longer.

Overall responses were generally better and, fewer patients developed antibodies when treated with the combination of adalimumab and MTX compared to adalimumab alone. Taking these results into consideration, adalimumab is recommended for use in combination with MTX and for use as monotherapy in patients for whom MTX use is not appropriate (see section 4.2).

## *pJIA II*

The safety and efficacy of adalimumab was assessed in an open-label, multicentre study in 32 children (2 - <4 years old or aged 4 and above weighing < 15 kg) with moderately to severely active polyarticular JIA. The patients received 24 mg/m<sup>2</sup> body surface area (BSA) of adalimumab up to a maximum of 20 mg every other week as a single dose via SC injection for at least 24 weeks. During the study, most subjects used concomitant MTX, with fewer reporting use of corticosteroids or NSAIDs.

At Week 12 and Week 24, PedACR30 response was 93.5% and 90.0%, respectively, using the observed data approach. The proportions of subjects with PedACR50/70/90 at Week 12 and Week 24 were 90.3%/61.3%/38.7% and 83.3%/73.3%/36.7%, respectively. Amongst those who responded (Paediatric ACR 30) at Week 24 (n = 27 out of 30 patients), the Paediatric ACR 30 responses were maintained for up to 60 weeks in the OLE phase in patients who received adalimumab throughout this time period. Overall, 20 subjects were treated for 60 weeks or longer.

## Enthesitis-related arthritis

The safety and efficacy of adalimumab were assessed in a multicentre, randomised, double-blind study in 46 paediatric patients (6 to 17 years old) with moderate enthesitis-related arthritis. Patients were randomised to receive either 24 mg/m<sup>2</sup> body surface area (BSA) of adalimumab up to a maximum of 40 mg, or placebo every other week for 12 weeks. The double-blind period is followed by an open-label period during which patients received 24 mg/m<sup>2</sup> BSA of adalimumab up to a maximum of 40 mg every other week subcutaneously for up to an additional 192 weeks. The primary endpoint was the percent change from Baseline to Week 12 in the number of active joints with arthritis (swelling not due to deformity or joints with loss of motion plus pain and/or tenderness), which was achieved with mean percent decrease of -62.6% (median percent change -88.9%) in patients in the adalimumab group compared to -11.6% (median percent change -50.0%) in patients in the placebo group. Improvement in number of active joints with arthritis was maintained during the open-label period through Week 156 for the 26 of 31 (84%) patients in the adalimumab group who remained in the study. Although not statistically significant, the majority of patients demonstrated clinical improvement in secondary endpoints such as number of sites of enthesitis, tender joint count (TJC), swollen joint count (SJC), Paediatric ACR 50 response, and Paediatric ACR 70 response.

***Axial spondyloarthritis***

Ankylosing spondylitis (AS)

Adalimumab 40 mg every other week was assessed in 393 patients in two randomised, 24 week double-blind, placebo-controlled studies in patients with active ankylosing spondylitis (mean baseline score of disease activity [Bath Ankylosing Spondylitis Disease Activity Index (BASDAI)] was 6.3 in all groups) who have had an inadequate response to conventional therapy. Seventy-nine (20.1%) patients were treated concomitantly with disease modifying anti-rheumatic drugs, and 37 (9.4%) patients with glucocorticoids. The blinded period was followed by an open-label period during which patients received adalimumab 40 mg every other week subcutaneously for up to an additional 28 weeks. Subjects (n = 215, 54.7%) who failed to achieve ASAS 20 at Weeks 12, or 16 or 20 received early escape open-label adalimumab 40 mg every other week subcutaneously and were subsequently treated as non-responders in the double-blind statistical analyses.

In the larger AS study I with 315 patients, results showed statistically significant improvement of the signs and symptoms of ankylosing spondylitis in patients treated with adalimumab compared to placebo. Significant response was first observed at Week 2 and maintained through 24 weeks (Table 13).

**Table 13. Efficacy Responses in Placebo-Controlled AS Study – Study I – Reduction of Signs and Symptoms**

<b>Response</b>	<b>Placebo N = 107</b>	<b>Adalimumab N = 208</b>
<b>ASAS 20</b>		
Week 2	16%	42%***
Week 12	21%	58%***
Week 24	19%	51%***
<b>ASAS 50</b>		
Week 2	3%	16%***
Week 12	10%	38%***
Week 24	11%	35%***
<b>ASAS 70</b>		

<b>Response</b>	<b>Placebo N = 107</b>	<b>Adalimumab N = 208</b>
Week 2	0%	7%**
Week 12	5%	23%***
Week 24	8%	24%***
<b>BASDAI 50</b>		
Week 2	4%	20%***
Week 12	16%	45%***
Week 24	15%	42%***

Abbreviations: AS=Ankylosing spondylitis; ASAS=Assessments in Ankylosing Spondylitis International Working Group; BASDAI=Bath Ankylosing Spondylitis Disease Activity Index.

\*\*\*, \*\* Statistically significant at  $p < 0.001$ ,  $< 0.01$  for all comparisons between adalimumab and placebo at Weeks 2, 12 and 24

Adalimumab-treated patients had significantly greater improvement at Week 12 which was maintained through Week 24 in both the SF36 and Ankylosing Spondylitis Quality of Life Questionnaire (ASQoL).

Similar trends (not all statistically significant) were seen in the smaller randomised, double-blind, placebo-controlled AS study II of 82 adult patients with active ankylosing spondylitis.

#### Axial spondyloarthritis without radiographic evidence of AS

The safety and efficacy of adalimumab were assessed in two randomised, double-blind placebo-controlled studies in patients with non-radiographic axial spondyloarthritis (nr-axSpA). Study nr-axSpA I evaluated patients with active nr-axSpA. Study nr-axSpA II was a treatment withdrawal study in active nr-axSpA patients who achieved remission during open-label treatment with adalimumab.

#### *Study nr-axSpA I*

In Study nr-axSpA I, adalimumab 40 mg every other week was assessed in 185 patients in a randomised, 12 week double-blind, placebo-controlled study in patients with active nr-axSpA (mean baseline score of disease activity [Bath Ankylosing Spondylitis Disease Activity Index

(BASDAI)] was 6.4 for patients treated with adalimumab and 6.5 for those on placebo) who have had an inadequate response to or intolerance to  $\geq 1$  NSAIDs, or a contraindication for NSAIDs.

Thirty-three (18%) patients were treated concomitantly with disease modifying anti-rheumatic drugs, and 146 (79%) patients with NSAIDs at baseline. The double-blind period was followed by an open-label period during which patients receive adalimumab 40 mg every other week subcutaneously for up to an additional 144 weeks. Week 12 results showed statistically significant improvement of the signs and symptoms of active nr-axSpA in patients treated with adalimumab compared to placebo (Table 14).

**Table 14. Efficacy Response in Placebo-Controlled Study nr-axSpA I**

<b>Double-Blind Response at Week 12</b>	<b>Placebo N = 94</b>	<b>Adalimumab N = 91</b>
ASAS 40	15%	36%***
ASAS 20	31%	52%**
ASAS 5/6	6%	31%***
ASAS Partial Remission	5%	16%*
BASDAI 50	15%	35%**
ASDAS <sup>a,b</sup>	-0.3	-1.0***
ASDAS Inactive Disease	4%	24%***
hs-CRP <sup>a,c,d</sup>	-0.3	-4.7***
SPARCC MRI Sacroiliac Joints <sup>a,e</sup>	-0.6	-3.2**
SPARCC MRI Spine <sup>a,f</sup>	-0.2	-1.8**

Abbreviations: ASAS=Assessment of Ankylosing Spondylitis International Working Group; ASDAS=Ankylosing Spondylitis Disease Activity Score; BASDAI=Bath Ankylosing Spondylitis Disease Activity Index; hs-CRP=high sensitivity C-reactive protein; SPARCC=Spondyloarthritis Research Consortium of Canada; nr-axSpA=non-radiographic axial spondyloarthritis.

- <sup>a</sup> mean change from baseline
- <sup>b</sup> n = 91 placebo and n = 87 adalimumab
- <sup>c</sup> high sensitivity C-Reactive Protein (mg/L)
- <sup>d</sup> n = 73 placebo and n = 70 adalimumab
- <sup>e</sup> n = 84 placebo and adalimumab
- <sup>f</sup> n = 82 placebo and n = 85 adalimumab

\*\*\*, \*\*, \* Statistically significant at p < 0.001, < 0.01, and < 0.05, respectively, for all comparisons between

<b>Double-Blind Response at Week 12</b>	<b>Placebo N = 94</b>	<b>Adalimumab N = 91</b>
---	---------------------------	------------------------------

adalimumab and placebo.

In the open-label extension, improvement in the signs and symptoms was maintained with adalimumab therapy through Week 156.

### Inhibition of inflammation

Significant improvement of signs of inflammation as measured by hs-CRP and MRI of both Sacroiliac Joints and the Spine was maintained in adalimumab-treated patients through Week 156 and Week 104, respectively.

### Quality of life and physical function

Health-related quality of life and physical function were assessed using the HAQ-S and the SF-36 questionnaires. Adalimumab showed statistically significantly greater improvement in the HAQ-S total score and the SF-36 Physical Component Score (PCS) from baseline to Week 12 compared to placebo. Improvement in health-related quality of life and physical function was maintained during the open-label extension through Week 156.

### *Study nr-axSpA II*

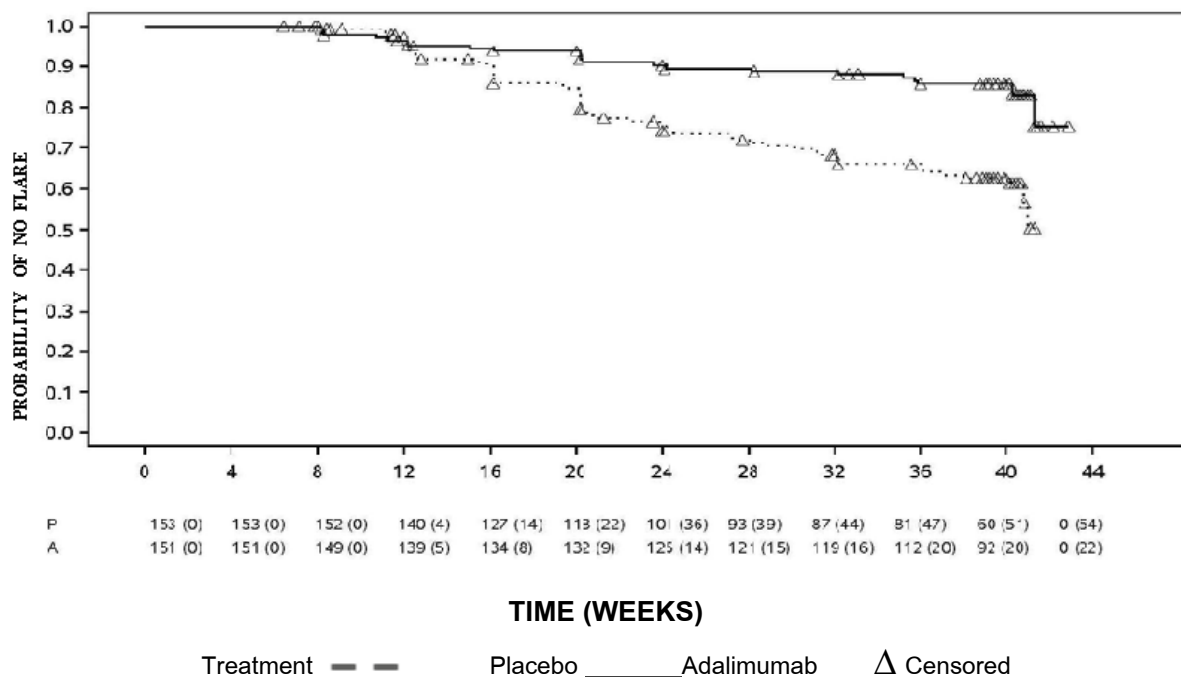
673 patients with active nr-axSpA (mean baseline disease activity [BASDAI] was 7.0) who had an inadequate response to  $\geq 2$  NSAIDs, or an intolerance to or a contraindication for NSAIDs enrolled into the open-label period of Study nr-axSpA II during which they received adalimumab 40 mg every other week (eow) for 28 weeks.

These patients also had objective evidence of inflammation in the sacroiliac joints or spine on MRI or elevated hs-CRP. Patients who achieved sustained remission for at least 12 weeks (N = 305) (ASDAS < 1.3 at Weeks 16, 20, 24, and 28) during the open-label period were then randomised to receive either continued treatment with adalimumab 40 mg eow (N = 152) or placebo (N = 153) for an additional 40 weeks in a double-blind, placebo-controlled period (total study duration 68 weeks). Subjects who flared during the double-blind period were allowed Humira 40 mg eow rescue therapy for at least 12 weeks.



The primary efficacy endpoint was the proportion of patients with no flare by Week 68 of the study. Flare was defined as ASDAS  $\geq$  2.1 at two consecutive visits four weeks apart. A greater proportion of patients on adalimumab had no disease flare during the double-blind period, when compared with those on placebo (70.4% vs 47.1%,  $p < 0.001$ ) (Figure 1).

**Figure 1. Kaplan-Meier Curves Summarizing Time to Flare in Study nr-axSpA II**



Note: P = Placebo (Number at Risk (flared)); A = Adalimumab (Number at Risk (flared)).

Among the 68 patients who flared in the group allocated to treatment withdrawal, 65 completed 12 weeks of rescue therapy with adalimumab, out of which 37 (56.9%) had regained remission (ASDAS < 1.3) after 12 weeks of restarting the open-label treatment.

By Week 68, patients receiving continuous adalimumab treatment showed statistically significant greater improvement of the signs and symptoms of active nr-axSpA as compared to patients allocated to treatment withdrawal during the double-blind period of the study (Table 15).

**Table 15. Efficacy Response in Placebo-Controlled Period for Study nr-axSpA II**

Double-Blind Response at Week 68	Placebo N = 153	Adalimumab N = 152
ASAS <sup>a</sup> 20	47.1%	70.4%***

ASAS <sup>a</sup> 40	45.8%	65.8%***
ASAS Partial Remission	26.8%	42.1%**
ASDAS Inactive Disease	33.3%	57.2%***
Partial Flare <sup>b</sup>	64.1%	40.8%***

Abbreviations: ASAS=Assessments of Ankylosing Spondylitis International Working Group; ASDAS=Ankylosing Spondylitis Disease Activity Score; N=number of patients; nr axSpA=non radiographic axial spondyloarthritis.

<sup>a</sup> Baseline is defined as open-label baseline when patients have active disease.

<sup>b</sup> Partial flare is defined as ASDAS  $\geq$  1.3 but < 2.1 at 2 consecutive visits.

\*\*\*, \*\* Statistically significant at  $p < 0.001$  and  $< 0.01$ , respectively, for all comparisons between adalimumab and placebo.

### ***Psoriatic arthritis***

Adalimumab, 40 mg every other week, was studied in patients with moderately to severely active psoriatic arthritis in two placebo-controlled studies, PsA studies I and II. PsA study I with 24 week duration, treated 313 adult patients who had an inadequate response to non-steroidal anti-inflammatory drug therapy and of these, approximately 50% were taking methotrexate. PsA study II with 12-week duration, treated 100 patients who had an inadequate response to DMARD therapy. Upon completion of both studies, 383 patients enrolled in an open-label extension study, in which 40 mg adalimumab was administered every other week.

There is insufficient evidence of the efficacy of adalimumab in patients with ankylosing spondylitis-like psoriatic arthropathy due to the small number of patients studied.

**Table 16. ACR Response in Placebo-Controlled Psoriatic Arthritis Studies (Percent of Patients)**

Response	PsA Study I		PsA Study II	
	Placebo N = 162	Adalimumab N = 151	Placebo N = 49	Adalimumab N = 51
ACR 20				
Week 12	14%	58%***	16%	39%*
Week 24	15%	57%***	N/A	N/A
ACR 50				
Week 12	4%	36%***	2%	25%***

	PsA Study I		PsA Study II	
Response	Placebo N = 162	Adalimumab N = 151	Placebo N = 49	Adalimumab N = 51
Week 24	6%	39%***	N/A	N/A
ACR 70				
Week 12	1%	20%***	0%	14%*
Week 24	1%	23%***	N/A	N/A

Abbreviations: ACR=American College of Rheumatology; N/A=not applicable; PsA=psoriatic arthritis.

\*\*\* p < 0.001 for all comparisons between adalimumab and placebo.

\* p < 0.05 for all comparisons between adalimumab and placebo.

ACR responses in PsA study I were similar with and without concomitant methotrexate therapy. ACR responses were maintained in the open-label extension study for up to 136 weeks.

Radiographic changes were assessed in the psoriatic arthritis studies. Radiographs of hands, wrists, and feet were obtained at baseline and Week 24 during the double-blind period when patients were on adalimumab or placebo and at Week 48 when all patients were on open-label adalimumab. A modified Total Sharp Score (mTSS), which included distal interphalangeal joints (i.e. not identical to the mTSS used for rheumatoid arthritis), was used.

Adalimumab treatment reduced the rate of progression of peripheral joint damage compared with placebo treatment as measured by change from baseline in mTSS (mean  $\pm$  SD)  $0.8 \pm 2.5$  in the placebo group (at Week 24) compared with  $0.0 \pm 1.9$ ; ( $p < 0.001$ ) in the adalimumab group (at Week 48).

In subjects treated with adalimumab with no radiographic progression from baseline to Week 48 ( $n = 102$ ), 84% continued to show no radiographic progression through 144 weeks of treatment. Adalimumab-treated patients demonstrated statistically significant improvement in physical function as assessed by HAQ and Short Form Health Survey (SF 36) compared to placebo at Week 24. Improved physical function continued during the open-label extension up to Week 136.

### **Psoriasis**

The safety and efficacy of adalimumab were studied in adult patients with chronic plaque psoriasis ( $\geq 10\%$  BSA involvement and Psoriasis Area and Severity Index (PASI)  $\geq 12$  or  $\geq 10$ ) who were candidates for systemic therapy or phototherapy in randomised, double-blind studies. 73% of patients enrolled in Psoriasis Studies I and II had received prior systemic therapy or phototherapy. The safety and efficacy of adalimumab were also studied in adult patients with moderate to severe chronic plaque psoriasis with concomitant hand and/or foot psoriasis who were candidates for systemic therapy in a randomised double-blind study (Psoriasis Study III).

Psoriasis Study I (REVEAL) evaluated 1,212 patients within three treatment periods. In period A, patients received placebo or adalimumab at an initial dose of 80 mg followed by 40 mg every other week starting one week after the initial dose. After 16 weeks of therapy, patients who achieved at least a PASI 75 response (PASI score improvement of at least 75% relative to baseline), entered period B and received open-label 40 mg adalimumab every other week. Patients who maintained  $\geq$  PASI 75 response at Week 33 and were originally randomised to active therapy in Period A, were re-randomised in period C to receive 40 mg adalimumab every other week or placebo for an additional 19 weeks. Across all treatment groups, the mean baseline PASI score was 18.9 and the baseline Physician's Global Assessment (PGA) score ranged from "moderate" (53% of subjects included) to "severe" (41%) to "very severe" (6%).

Psoriasis Study II (CHAMPION) compared the efficacy and safety of adalimumab vs methotrexate and placebo in 271 patients. Patients received placebo, an initial dose of MTX 7.5 mg and thereafter dose increases up to Week 12, with a maximum dose of 25 mg or an initial dose of 80 mg adalimumab followed by 40 mg every other week (starting one week after the initial dose) for 16 weeks. There are no data available comparing adalimumab and MTX beyond 16 weeks of therapy. Patients receiving MTX who achieved a  $\geq$  PASI 50 response at Week 8 and/or 12 did not receive further dose increases. Across all treatment groups, the mean baseline PASI score was 19.7 and the baseline PGA score ranged from "mild" (< 1%) to "moderate" (48%) to "severe" (46%) to "very severe" (6%).

Patients participating in all Phase 2 and Phase 3 psoriasis studies were eligible to enroll into an open-label extension trial, where adalimumab was given for at least an additional 108 weeks.

In Psoriasis Studies I and II, a primary endpoint was the proportion of patients who achieved a PASI 75 response from baseline at Week 16 (see Tables 17 and 18).

**Table 17. Ps Study I (REVEAL) - Efficacy Results at 16 Weeks**

	<b>Placebo</b> <b>N = 398</b> <b>n (%)</b>	<b>Adalimumab 40 mg eow</b> <b>N = 814</b> <b>n (%)</b>
≥PASI 75 <sup>a</sup>	26 (6.5)	578 (70.9) <sup>b</sup>
PASI 100	3 (0.8)	163 (20.0) <sup>b</sup>
PGA: Clear/minimal	17 (4.3)	506 (62.2) <sup>b</sup>

Abbreviations: eow=every other week; PASI=Psoriasis Area and Severity Index; PGA=Physician's Global Assessment; Ps=psoriasis.

<sup>a</sup> Percent of patients achieving PASI75 response was calculated as centre-adjusted rate.

<sup>b</sup>  $p < 0.001$ , adalimumab vs placebo.

**Table 18. Ps Study II (CHAMPION) Efficacy Results at 16 Weeks**

	<b>Placebo</b> <b>N = 53</b> <b>n (%)</b>	<b>MTX</b> <b>N = 110</b> <b>n (%)</b>	<b>Adalimumab 40 mg eow</b> <b>N = 108</b> <b>n (%)</b>
≥ PASI 75	10 (18.9)	39 (35.5)	86 (79.6) <sup>a,b</sup>
PASI 100	1 (1.9)	8 (7.3)	18 (16.7) <sup>c,d</sup>
PGA: Clear/minimal	6 (11.3)	33 (30.0)	79 (73.1) <sup>a,b</sup>

Abbreviations: eow=every other week; PASI=Psoriasis Area and Severity Index; PGA=Physician's Global Assessment; Ps=psoriasis.

<sup>a</sup>  $p < 0.001$ , adalimumab vs placebo.

<sup>b</sup>  $p < 0.001$ , adalimumab vs methotrexate.

<sup>c</sup>  $p < 0.01$ , adalimumab vs placebo.

<sup>d</sup>  $p < 0.05$ , adalimumab vs methotrexate.

In Psoriasis Study I, 28% of patients who were PASI 75 responders and were re-randomised to placebo at Week 33 compared to 5% continuing on adalimumab,  $p < 0.001$ , experienced "loss of adequate response" (PASI score after Week 33 and on or before Week 52 that resulted in a < PASI 50 response relative to baseline with a minimum of a 6-point increase in PASI score relative to Week 33). Of the patients who lost adequate response after re-randomisation to placebo who then enrolled into the open-label extension trial, 38% (25/66) and 55% (36/66) regained PASI 75 response after 12 and 24 weeks of re-treatment, respectively.

A total of 233 PASI 75 responders at Week 16 and Week 33 received continuous adalimumab therapy for 52 weeks in Psoriasis Study I, and continued adalimumab in the open-label extension trial. PASI 75 and PGA of clear or minimal response rates in these patients were 74.7% and 59.0%, respectively, after an additional 108 weeks of open-label therapy (total of 160 weeks). In an analysis in which all patients who dropped out of the study for adverse events or lack of efficacy, or who dose-escalated, were considered non-responders, PASI 75 and PGA of clear or minimal response rates in these patients were 69.6% and 55.7%, respectively, after an additional 108 weeks of open-label therapy (total of 160 weeks).

A total of 347 stable responders participated in a withdrawal and retreatment evaluation in an open-label extension study. During the withdrawal period, symptoms of psoriasis returned over time with a median time to relapse (decline to PGA “moderate” or worse) of approximately 5 months. None of these patients experienced rebound during the withdrawal period. A total of 76.5% (218/285) of patients who entered the retreatment period had a response of PGA “clear” or “minimal” after 16 weeks of retreatment, irrespective of whether they relapsed during withdrawal (69.1% [123/178] and 88.8% [95/107] for patients who relapsed and who did not relapse during the withdrawal period, respectively). A similar safety profile was observed during retreatment as before withdrawal.

Significant improvements at Week 16 from baseline compared to placebo (Studies I and II) and MTX (Study II) were demonstrated in the DLQI (Dermatology Life Quality Index). In Study I, improvements in the physical and mental component summary scores of the SF-36 were also significant compared to placebo.

In an open-label extension study, for patients who dose escalated from 40 mg every other week to 40 mg weekly due to a PASI response below 50%, 26.4% (92/349) and 37.8% (132/349) of patients achieved PASI 75 response at Week 12 and 24, respectively.

Psoriasis Study III (REACH) compared the efficacy and safety of adalimumab vs placebo in 72 patients with moderate to severe chronic plaque psoriasis and hand and/or foot psoriasis. Patients received an initial dose of 80 mg adalimumab followed by 40 mg every other week (starting one week after the initial dose) or placebo for 16 weeks. At Week 16, a statistically significantly greater proportion of patients who received adalimumab achieved PGA of ‘clear’ or ‘almost clear’ for the hands and/or feet compared to patients who received placebo (30.6% vs 4.3%, respectively [P = 0.014]).

Psoriasis Study IV compared efficacy and safety of adalimumab vs placebo in 217 adult patients with moderate to severe nail psoriasis. Patients received an initial dose of 80 mg adalimumab followed by 40 mg every other week (starting one week after the initial dose) or placebo for 26 weeks followed by open-label adalimumab treatment for an additional 26 weeks. Nail psoriasis assessments included the Modified Nail Psoriasis Severity Index (mNAPSI), the Physician's Global Assessment of Fingernail Psoriasis (PGA-F) and the Nail Psoriasis Severity Index (NAPSI) (see Table 19). Adalimumab demonstrated a treatment benefit in nail psoriasis patients with different extents of skin involvement (BSA  $\geq$  10% (60% of patients) and BSA < 10% and  $\geq$  5% (40% of patients)).

**Table 19. Ps Study IV Efficacy Results at 16, 26 and 52 Weeks**

Endpoint	Week 16		Week 26		Week 52
	Placebo-Controlled		Placebo-Controlled		Open-label
	Placebo N = 108	Adalimumab 40 mg eow N = 109	Placebo N=108	Adalimumab 40 mg eow N = 109	Adalimumab 40 mg eow N = 80
$\geq$ mNAPSI 75 (%)	2.9	26.0 <sup>a</sup>	3.4	46.6 <sup>a</sup>	65.0
PGA-F clear/minimal and $\geq$ 2-grade improvement (%)	2.9	29.7 <sup>a</sup>	6.9	48.9 <sup>a</sup>	61.3
Percent Change in Total Fingernail NAPSI (%)	-7.8	-44.2 <sup>a</sup>	-11.5	-56.2 <sup>a</sup>	-72.2

Abbreviations: eow=every other week; mNAPSI=Modified Nail Psoriasis Severity Index; NAPSI=Nail Psoriasis Severity Index; PGA-F=Physician's Global Assessment of Fingernail Psoriasis; Ps=psoriasis.

<sup>a</sup> p < 0.001, adalimumab vs placebo.

Adalimumab-treated patients showed statistically significant improvements at Week 26 compared with placebo in the DLQI.

### ***Paediatric plaque psoriasis***

The efficacy of adalimumab was assessed in a randomised, double-blind, controlled study of

114 paediatric patients from 4 years of age with severe chronic plaque psoriasis (as defined by a PGA  $\geq$  4 or > 20% BSA involvement or > 10% BSA involvement with very thick lesions or PASI  $\geq$  20 or  $\geq$  10 with clinically relevant facial, genital, or hand/ foot involvement) who were inadequately controlled with topical therapy and heliotherapy or phototherapy.

Patients received adalimumab 0.8 mg/kg eow (up to 40 mg), 0.4 mg/kg eow (up to 20 mg), or methotrexate 0.1 – 0.4 mg/kg weekly (up to 25 mg). At Week 16, more patients randomised to adalimumab 0.8 mg/kg had positive efficacy responses (e.g., PASI 75) than those randomised to 0.4 mg/kg eow or MTX.

**Table 20. Paediatric Plaque Psoriasis Efficacy Results at 16 Weeks**

	<b>MTX N = 37</b>	<b>Adalimumab 0.8 mg/kg eow N = 38</b>
PASI 75 <sup>a</sup>	12 (32.4%)	22 (57.9%)
PGA: Clear/minimal <sup>b</sup>	15 (40.5%)	23 (60.5%)

Abbreviations: eow=every other week; MTX=methotrexate; PASI= Psoriasis Area and Severity Index;

PGA=Physician's Global Assessment.

<sup>a</sup> p=0.027, adalimumab 0.8 mg/kg vs MTX.

<sup>b</sup> p=0.083, adalimumab 0.8 mg/kg vs MTX.

Patients who achieved PASI 75 and PGA clear or minimal were withdrawn from treatment for up to 36 weeks and monitored for loss of disease control (i.e. a worsening of PGA by at least 2 grades). Patients were then re-treated with adalimumab 0.8 mg/kg eow for an additional 16 weeks and response rates observed during retreatment were similar to the previous double-blind period: PASI 75 response of 78.9% (15 of 19 subjects) and PGA clear or minimal of 52.6% (10 of 19 subjects).

In the open-label period of the study, PASI 75 and PGA clear or minimal responses were maintained for up to an additional 52 weeks with no new safety findings.

### ***Hidradenitis suppurativa***

The safety and efficacy of adalimumab were assessed in randomised, double-blind, placebo-controlled studies and an open-label extension study in adult patients with moderate to



severe hidradenitis suppurativa (HS) who were intolerant, had a contraindication or an inadequate response to at least a 3-month trial of systemic antibiotic therapy. The patients in HS-I and HS-II had Hurley Stage II or III disease with at least 3 abscesses or inflammatory nodules.

Study HS-I (PIONEER I) evaluated 307 patients with 2 treatment periods. In Period A, patients received placebo or adalimumab at an initial dose of 160 mg at Week 0, 80 mg at Week 2, and 40 mg every week starting at Week 4 to Week 11. Concomitant antibiotic use was not allowed during the study. After 12 weeks of therapy, patients who had received adalimumab in Period A were re-randomised in Period B to 1 of 3 treatment groups (adalimumab 40 mg every week, adalimumab 40 mg every other week, or placebo from Week 12 to Week 35). Patients who had been randomised to placebo in Period A were assigned to receive adalimumab 40 mg every week in Period B.

Study HS-II (PIONEER II) evaluated 326 patients with 2 treatment periods. In Period A, patients received placebo or adalimumab at an initial dose of 160 mg at Week 0 and 80 mg at Week 2 and 40 mg every week starting at Week 4 to Week 11. 19.3% of patients had continued baseline oral antibiotic therapy during the study. After 12 weeks of therapy, patients who had received adalimumab in Period A were re-randomised in Period B to 1 of 3 treatment groups (adalimumab 40 mg every week, adalimumab 40 mg every other week, or placebo from Week 12 to Week 35). Patients who had been randomised to placebo in Period A were assigned to receive placebo in Period B.

Patients participating in Studies HS-I and HS-II were eligible to enroll into an open-label extension study in which adalimumab 40 mg was administered every week. Mean exposure in all adalimumab population was 762 days. Throughout all 3 studies patients used topical antiseptic wash daily.

### Clinical Response

Reduction of inflammatory lesions and prevention of worsening of abscesses and draining fistulas was assessed using Hidradenitis Suppurativa Clinical Response (HiSCR; at least a 50% reduction in total abscess and inflammatory nodule count with no increase in abscess count and no increase in draining fistula count relative to Baseline). Reduction in HS-related skin pain was assessed using a Numeric Rating Scale in patients who entered the study with an initial baseline score of 3 or greater on a 11 point scale.

At Week 12, a significantly higher proportion of patients treated with adalimumab vs placebo achieved HiSCR. At Week 12, a significantly higher proportion of patients in Study HS-II experienced a clinically relevant decrease in HS-related skin pain (see Table 21). Patients treated with adalimumab had significantly reduced risk of disease flare during the initial 12 weeks of treatment.

**Table 21. Efficacy Results at 12 Weeks, HS Studies I and II**

	HS Study I		HS Study II	
	Placebo	Adalimumab 40 mg Weekly	Placebo	Adalimumab 40 mg Weekly
Hidradenitis Suppurativa	N = 154	N = 153	N = 163	N = 163
Clinical Response (HiSCR) <sup>a</sup>	40 (26.0%)	64 (41.8%)*	45 (27.6%)	96 (58.9%)*
≥ 30% Reduction in Skin Pain <sup>b</sup>	N = 109 27 (24.8%)	N = 122 34 (27.9%)	N = 111 23 (20.7%)	N = 105 48 (45.7%)*

Abbreviations: HS=hidradenitis suppurativa.

\* p < 0.05, \*\*\* p < 0.001, adalimumab vs placebo

<sup>a</sup> Among all randomised patients.

<sup>b</sup> Among patients with baseline HS-related skin pain assessment  $\geq 3$ , based on Numeric Rating Scale 0-10; 0 = no skin pain, 10 = skin pain as bad as you can imagine.

Treatment with adalimumab 40 mg every week significantly reduced the risk of worsening of abscesses and draining fistulas. Approximately twice the proportion of patients in the placebo group in the first 12 weeks of Studies HS-I and HS-II, compared with those in the adalimumab group experienced worsening of abscesses (23.0% vs 11.4%, respectively) and draining fistulas (30.0% vs 13.9%, respectively).

Greater improvements at Week 12 from baseline compared to placebo were demonstrated in skin-specific health-related quality of life, as measured by the Dermatology Life Quality Index (DLQI; Studies HS-I and HS-II), patient global satisfaction with medication treatment as measured by the Treatment Satisfaction Questionnaire Medication (TSQM; Studies HS-I and HS-II), and physical health as measured by the physical component summary score of the SF-36 (Study HS-I).

In patients with at least a partial response to adalimumab 40 mg weekly at Week 12, the HiSCR rate at Week 36 was higher in patients who continued weekly adalimumab than in patients in whom dosing frequency was reduced to every other week, or in whom treatment was withdrawn (see Table 22).

**Table 22. Proportion of Patients<sup>a</sup> Achieving HiSCR<sup>b</sup> at Weeks 24 and 36 After Treatment Reassignment from Weekly Adalimumab at Week 12**

	<b>Placebo (treatment withdrawal) N = 73</b>	<b>Adalimumab 40 mg every other week N = 70</b>	<b>Adalimumab 40 mg weekly N = 70</b>
Week 24	24 (32.9%)	36 (51.4%)	40 (57.1%)
Week 36	22 (30.1%)	28 (40.0%)	39 (55.7%)

Abbreviations: HiSCR= Hidradenitis Suppurativa Clinical Response.

<sup>a</sup> Patients with at least a partial response to adalimumab 40 mg weekly after 12 weeks of treatment.

<sup>b</sup> Patients meeting protocol-specified criteria for loss of response or no improvement were required to discontinue from the studies and were counted as nonresponders.

Among patients who were at least partial responders at Week 12, and who received continuous weekly adalimumab therapy, the HiSCR rate at Week 48 was 68.3% and at Week 96 was 65.1%. Longer term treatment with adalimumab 40 mg weekly for 96 weeks identified no new safety findings.

Among patients whose adalimumab treatment was withdrawn at Week 12 in Studies HS-I and HS-II, the HiSCR rate 12 weeks after re-introduction of adalimumab 40 mg weekly returned to levels similar to that observed before withdrawal (56.0%).

### ***Adolescent hidradenitis suppurativa***

There are no clinical trials with adalimumab in adolescent patients with HS. Efficacy of adalimumab for the treatment of adolescent patients with HS is predicted based on the demonstrated efficacy and exposure-response relationship in adult HS patients and the likelihood that the disease course, pathophysiology, and drug effects are substantially similar to that of adults at the same exposure levels. Safety of the recommended adalimumab dose in the adolescent HS population is based on cross-indication safety profile of adalimumab in both adults

and paediatric patients at similar or more frequent doses (see section 5.2).

### ***Crohn's disease***

The safety and efficacy of adalimumab were assessed in over 1500 patients with moderately to severely active Crohn's disease (Crohn's Disease Activity Index (CDAI)  $\geq 220$  and  $\leq 450$ ) in randomised, double-blind, placebo-controlled studies. Concomitant stable doses of aminosalicylates, corticosteroids, and/or immunomodulatory agents were permitted and 80% of patients continued to receive at least one of these medications.

Induction of clinical remission (defined as CDAI < 150) was evaluated in two studies, CD Study I (CLASSIC I) and CD Study II (GAIN). In CD Study I, 299 TNF-antagonist naïve patients were randomised to one of four treatment groups; placebo at Weeks 0 and 2, 160 mg adalimumab at Week 0 and 80 mg at Week 2, 80 mg at Week 0 and 40 mg at Week 2, and 40 mg at Week 0 and 20 mg at Week 2. In CD Study II, 325 patients who had lost response or were intolerant to infliximab were randomised to receive either 160 mg adalimumab at Week 0 and 80 mg at Week 2 or placebo at Weeks 0 and 2. The primary non-responders were excluded from the studies and therefore these patients were not further evaluated.

Maintenance of clinical remission was evaluated in CD study III (CHARM). In CD Study III, 854 patients received open-label 80 mg at Week 0 and 40 mg at Week 2. At Week 4 patients were randomised to 40 mg every other week, 40 mg every week, or placebo with a total study duration of 56 weeks. Patients in clinical response (decrease in CDAI  $\geq 70$ ) at Week 4 were stratified and analysed separately from those not in clinical response at Week 4. Corticosteroid taper was permitted after Week 8.

CD study I and CD study II induction of remission and response rates are presented in Table 23.

**Table 23. Induction of Clinical Remission and Response (Percent of Patients)**

	CD Study I: Infliximab Naïve Patients			CD Study II: Infliximab Experienced Patients	
	Placebo N = 74	Adalimumab 80/40 mg N = 75	Adalimumab 160/80 mg N = 76	Placebo N = 166	Adalimumab 160/80 mg N = 159

Week 4					
Clinical remission	12%	24%	36%*	7%	21%*
Clinical response (CR-100)	24%	37%	49%**	25%	38%**

All p-values are pairwise comparisons of proportions for adalimumab vs placebo.

Abbreviations: CD=Crohn's disease.

\* p < 0.001

\*\* p < 0.01

Similar remission rates were observed for the 160/80 mg and 80/40 mg induction regimens by Week 8 and adverse events were more frequently noted in the 160/80 mg group.

In CD Study III, at Week 4, 58% (499/854) of patients were in clinical response and were assessed in the primary analysis. Of those in clinical response at Week 4, 48% had been previously exposed to other TNF-antagonists. Maintenance of remission and response rates are presented in Table 24. Clinical remission results remained relatively constant irrespective of previous TNF-antagonist exposure.

Disease-related hospitalisations and surgeries were statistically significantly reduced with adalimumab compared with placebo at Week 56.

**Table 24. Maintenance of Clinical Remission and Response (Percent of Patients)**

	Placebo	40 mg Adalimumab every other week	40 mg Adalimumab every week
<b>Week 26</b>	<b>N = 170</b>	<b>N = 172</b>	<b>N = 157</b>
Clinical remission	17%	40%*	47%*
Clinical response (CR-100)	27%	52%*	52%*
Patients in steroid-free remission for $\geq$ 90 days <sup>a</sup>	3% (2/66)	19% (11/58)**	15% (11/74)**
<b>Week 56</b>	<b>N = 170</b>	<b>N = 172</b>	<b>N = 157</b>
Clinical remission	12%	36%*	41%*
Clinical response (CR-100)	17%	41%*	48%*
Patients in steroid-free remission for $\geq$ 90 days <sup>a</sup>	5% (3/66)	29% (17/58)*	20% (15/74)**

- \*  $p < 0.001$  for adalimumab vs placebo pairwise comparisons of proportions.
- \*\*  $p < 0.02$  for adalimumab vs placebo pairwise comparisons of proportions.
- <sup>a</sup> Of those receiving corticosteroids at baseline.

Among patients who were not in response at Week 4, 43% of adalimumab maintenance patients responded by Week 12 compared to 30% of placebo maintenance patients. These results suggest that some patients who have not responded by Week 4 benefit from continued maintenance therapy through Week 12. Therapy continued beyond 12 weeks did not result in significantly more responses (see section 4.2).

117/276 patients from CD study I and 272/777 patients from CD studies II and III were followed through at least 3 years of open-label adalimumab therapy. 88 and 189 patients, respectively, continued to be in clinical remission. Clinical response (CR-100) was maintained in 102 and 233 patients, respectively.

### Quality of life

In CD Study I and CD Study II, statistically significant improvement in the disease-specific inflammatory bowel disease questionnaire (IBDQ) total score was achieved at Week 4 in patients randomised to adalimumab 80/40 mg and 160/80 mg compared to placebo and was seen at Weeks 26 and 56 in CD Study III as well among the adalimumab treatment groups compared to the placebo group.

### ***Paediatric Crohn's disease***

Adalimumab was assessed in a multicentre, randomised, double-blind clinical trial designed to evaluate the efficacy and safety of induction and maintenance treatment with doses dependent on body weight ( $< 40$  kg or  $\geq 40$  kg) in 192 paediatric subjects between the ages of 6 and 17 (inclusive) years, with moderate to severe Crohn's disease (CD) defined as Paediatric Crohn's Disease Activity Index (PCDAI) score  $> 30$ . Subjects had to have failed conventional therapy (including a corticosteroid and/or an immunomodulator) for CD. Subjects may also have previously lost response or been intolerant to infliximab.

All subjects received open-label induction therapy at a dose based on their Baseline body weight: 160 mg at Week 0 and 80 mg at Week 2 for subjects  $\geq 40$  kg, and 80 mg and 40 mg,

respectively, for subjects < 40 kg.

At Week 4, subjects were randomised 1:1 based on their body weight at the time to either the Low Dose or Standard Dose maintenance regimens as shown in Table 25.

**Table 25. Maintenance Regimen**

Patient Weight	Low Dose	Standard Dose
< 40 kg	10 mg eow	20 mg eow
≥ 40 kg	20 mg eow	40 mg eow

Abbreviation: eow=every other week

### Efficacy results

The primary endpoint of the study was clinical remission at Week 26, defined as PCDAI score ≤ 10.

Clinical remission and clinical response (defined as reduction in PCDAI score of at least 15 points from Baseline) rates are presented in Table 26. Rates of discontinuation of corticosteroids or immunomodulators are presented in Table 27.

**Table 26. Paediatric CD Study – PCDAI Clinical Remission and Response**

	Standard Dose 40/20 mg eow N = 93	Low Dose 20/10 mg eow N = 95	P-value*
<b>Week 26</b>			
Clinical remission	38.7%	28.4%	0.075
Clinical response	59.1%	48.4%	0.073
<b>Week 52</b>			
Clinical remission	33.3%	23.2%	0.100
Clinical response	41.9%	28.4%	0.038

Abbreviations: CD=Crohn's disease; eow=every other week.

\* P-value for Standard Dose vs Low Dose comparison.

**Table 27. Paediatric CD Study – Discontinuation of Corticosteroids or**

### Immunomodulators and Fistula Remission

	<b>Standard Dose 40/20 mg eow</b>	<b>Low Dose 20/10 mg eow</b>	<b>P-value<sup>1</sup></b>
<b>Discontinued corticosteroids</b>	<b>N = 33</b>	<b>N = 38</b>	
Week 26	84.8%	65.8%	0.066
Week 52	69.7%	60.5%	0.420
<b>Discontinuation of Immunomodulators<sup>2</sup></b>	<b>N = 60</b>	<b>N = 57</b>	
Week 52	30.0%	29.8%	0.983
<b>Fistula remission<sup>3</sup></b>	<b>N = 15</b>	<b>N = 21</b>	
Week 26	46.7%	38.1%	0.608
Week 52	40.0%	23.8%	0.303

Abbreviations: CD=Crohn's disease; eow=every other week.

<sup>1</sup> P-value for Standard Dose vs Low Dose comparison.

<sup>2</sup> Immunosuppressant therapy could only be discontinued at or after Week 26 at the investigator's discretion if the subject met the clinical response criterion.

<sup>3</sup> Defined as a closure of all fistulas that were draining at Baseline for at least 2 consecutive post-Baseline visits.

Statistically significant increases (improvement) from Baseline to Week 26 and 52 in Body Mass Index and height velocity were observed for both treatment groups.

Statistically and clinically significant improvements from Baseline were also observed in both treatment groups for quality of life parameters (including IMPACT III).

One hundred patients (n = 100) from the Paediatric CD Study continued in an open-label long-term extension study. After 5 years of adalimumab therapy, 74.0% (37/50) of the 50 patients remaining in the study continued to be in clinical remission, and 92.0% (46/50) of patients continued to be in clinical response per PCDAI.

### ***Ulcerative colitis***

The safety and efficacy of multiple doses of adalimumab were assessed in adult patients with moderately to severely active ulcerative colitis (Mayo score 6 to 12 with endoscopy subscore of 2 to 3) in randomised, double-blind, placebo-controlled studies.



In study UC-I, 390 TNF-antagonist naïve patients were randomised to receive either placebo at Weeks 0 and 2, 160 mg adalimumab at Week 0 followed by 80 mg at Week 2, or 80 mg adalimumab at Week 0 followed by 40 mg at Week 2. After Week 2, patients in both adalimumab arms received 40 mg eow. Clinical remission (defined as Mayo score  $\leq 2$  with no subscore  $> 1$ ) was assessed at Week 8.

In study UC-II, 248 patients received 160 mg of adalimumab at Week 0, 80 mg at Week 2 and 40 mg eow thereafter, and 246 patients received placebo. Clinical results were assessed for induction of remission at Week 8 and for maintenance of remission at Week 52.

Patients induced with 160/80 mg adalimumab achieved clinical remission vs placebo at Week 8 in statistically significantly greater percentages in study UC-I (18% vs 9% respectively,  $p=0.031$ ) and study UC-II (17% vs 9% respectively,  $p=0.019$ ). In study UC-II, among those treated with adalimumab who were in remission at Week 8, 21/41 (51%) were in remission at Week 52.

Results from the overall UC-II study population are shown in Table 28.

**Table 28. Response, Remission and Mucosal Healing in Study UC-II (Percent of Patients)**

	<b>Placebo</b>	<b>Adalimumab 40 mg eow</b>
<b>Week 52</b>	<b>N = 246</b>	<b>N = 248</b>
Clinical Response	18%	30%*
Clinical Remission	9%	17%*
Mucosal Healing	15%	25%*
Steroid-free remission for $\geq 90$ days <sup>a</sup>	6%	13%*
	(N = 140)	(N = 150)
<b>Week 8 and 52</b>		
Sustained Response	12%	24%**
Sustained Remission	4%	8%*
Sustained Mucosal Healing	11%	19%*

Clinical remission is Mayo score  $\leq 2$  with no subscore  $> 1$ .

Clinical response is decrease from baseline in Mayo score  $\geq 3$  points and  $\geq 30\%$  plus a decrease in the rectal bleeding subscore [RBS]  $\geq 1$  or an absolute RBS of 0 or 1.

Abbreviations: eow=every other week; UC=ulcerative colitis.

\*  $p < 0.05$  for adalimumab vs placebo pairwise comparison of proportions.

\*\*  $p < 0.001$  for adalimumab vs placebo pairwise comparison of proportions.

<sup>a</sup> Of those receiving corticosteroids at baseline.

Of those patients who had a response at Week 8, 47% were in response, 29% were in remission, 41% had mucosal healing, and 20% were in steroid-free remission for  $\geq 90$  days at Week 52.

Approximately 40% of patients in study UC-II had failed prior anti-TNF treatment with infliximab. The efficacy of adalimumab in those patients was reduced compared to that in anti-TNF naïve patients. Among patients who had failed prior anti-TNF treatment, Week 52 remission was achieved by 3% on placebo and 10% on adalimumab.

Patients from studies UC-I and UC-II had the option to roll over into an open-label long-term extension study (UC III). Following 3 years of adalimumab therapy, 75% (301/402) continued to be in clinical remission per partial Mayo score.

### Hospitalisation rates

During 52 weeks of studies UC-I and UC-II, lower rates of all-cause hospitalisations and UC-related hospitalisations were observed for the adalimumab-treated arm compared to the placebo arm. The number of all cause hospitalisations in the adalimumab treatment group was 0.18 per patient year vs 0.26 per patient year in the placebo group and the corresponding figures for UC-related hospitalisations were 0.12 per patient year vs 0.22 per patient year.

### Quality of life

In study UC-II, treatment with adalimumab resulted in improvements in the Inflammatory Bowel Disease Questionnaire (IBDQ) score.

### ***Uveitis***

The safety and efficacy of adalimumab were assessed in adult patients with non-infectious

intermediate, posterior, and panuveitis, excluding patients with isolated anterior uveitis, in two randomised, double-masked, placebo-controlled studies (UV I and II). Patients received placebo or adalimumab at an initial dose of 80 mg followed by 40 mg every other week starting one week after the initial dose. Concomitant stable doses of one non-biologic immunosuppressant were permitted.

Study UV I evaluated 217 patients with active uveitis despite treatment with corticosteroids (oral prednisone at a dose of 10 to 60 mg/day). All patients received a 2-week standardised dose of prednisone 60 mg/day at study entry followed by a mandatory taper schedule, with complete corticosteroid discontinuation by Week 15.

Study UV II evaluated 226 patients with inactive uveitis requiring chronic corticosteroid treatment (oral prednisone 10 to 35 mg/day) at baseline to control their disease. Patients subsequently underwent a mandatory taper schedule, with complete corticosteroid discontinuation by Week 19.

The primary efficacy endpoint in both studies was 'time to treatment failure'. Treatment failure was defined by a multi-component outcome based on inflammatory chorioretinal and/or inflammatory retinal vascular lesions, anterior chamber (AC) cell grade, vitreous haze (VH) grade and best corrected visual acuity (BCVA).

Patients who completed Studies UV I and UV II were eligible to enroll in an uncontrolled long-term extension study with an originally planned duration of 78 weeks. Patients were allowed to continue on study medication beyond Week 78 until they had access to adalimumab.

### Clinical Response

Results from both studies demonstrated statistically significant reduction of the risk of treatment failure in patients treated with adalimumab vs patients receiving placebo (see Table 29). Both studies demonstrated an early and sustained effect of adalimumab on the treatment failure rate vs placebo (see Figure 2).

**Table 29. Time to Treatment Failure in Studies UV I and UV II**

<b>Analysis Treatment</b>	<b>N</b>	<b>Failure N (%)</b>	<b>Median Time to Failure (months)</b>	<b>HR<sup>a</sup></b>	<b>CI 95% for HR<sup>a</sup></b>	<b>P-Value<sup>b</sup></b>
---------------------------	----------	----------------------	--	-----------------------	----------------------------------	----------------------------

<b>Time to Treatment Failure At or After Week 6 in Study UV I</b>						
Primary analysis (ITT)						
Placebo	107	84 (78.5)	3.0	--	--	--
Adalimumab	110	60 (54.5)	5.6	0.50	0.36, 0.70	< 0.001

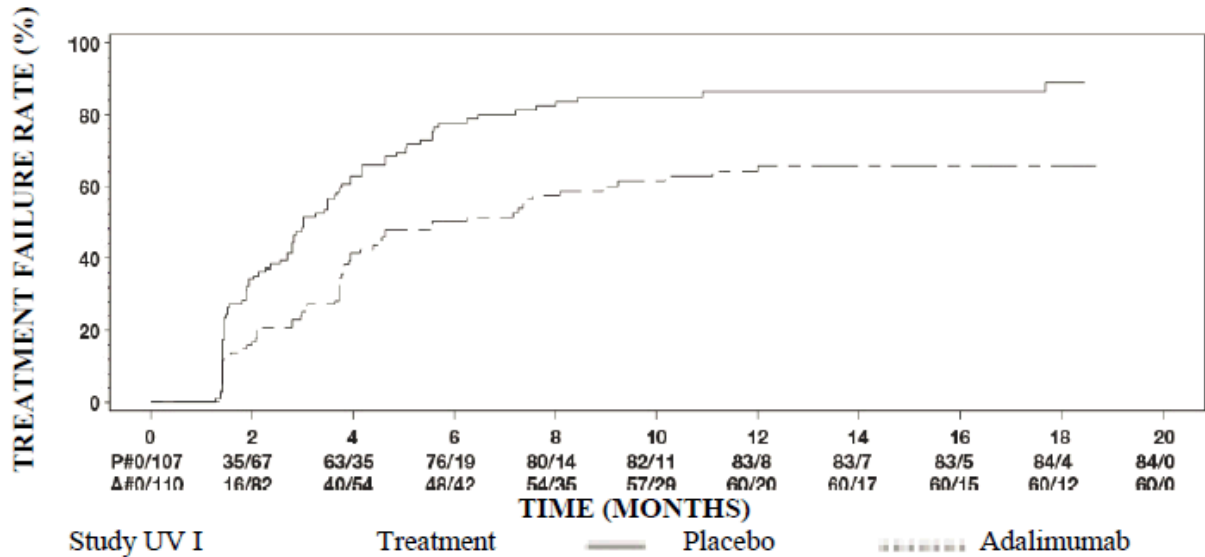
<b>Time to Treatment Failure At or After Week 2 in Study UV II</b>						
Primary analysis (ITT)						
Placebo	111	61 (55.0)	8.3	--	--	--
Adalimumab	115	45 (39.1)	NE <sup>c</sup>	0.57	0.39, 0.84	0.004

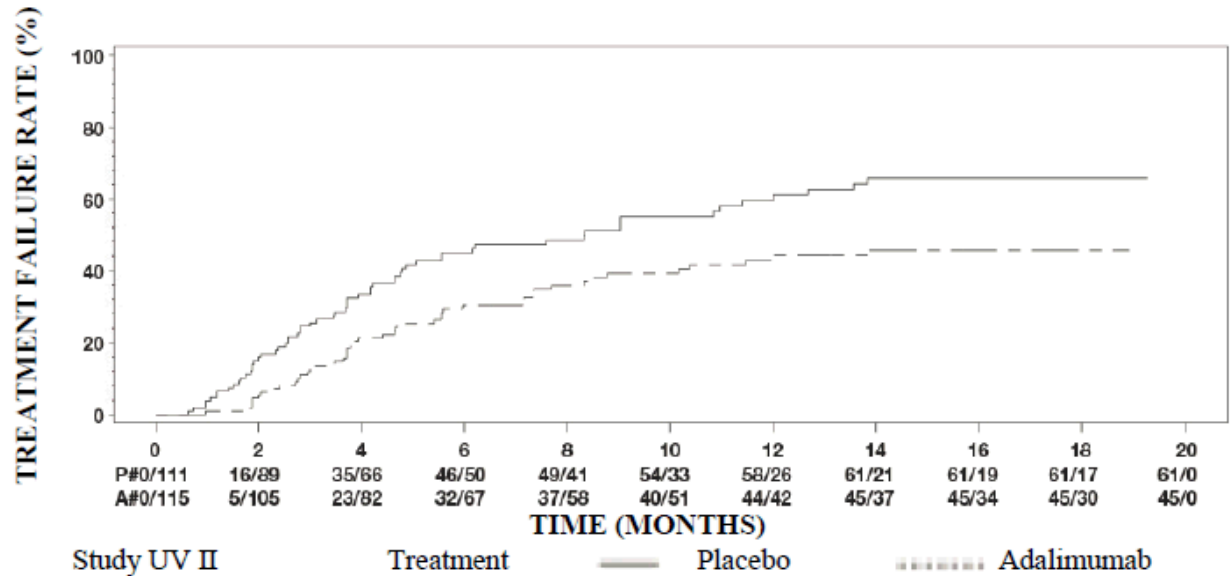
Note: Treatment failure at or after Week 6 (Study UV I), or at or after Week 2 (Study UV II), was counted as event. Drop outs due to reasons other than treatment failure were censored at the time of dropping out.

Abbreviations: CI=confidence interval; HR=hazard ratio; ITT=intent-to-treat; NE=not estimable; UV=uveitis.

- <sup>a</sup> HR of adalimumab vs placebo from proportional hazards regression with treatment as factor.
- <sup>b</sup> 2-sided p-value from log rank test.
- <sup>c</sup> Fewer than half of at-risk subjects had an event.

**Figure 2. Kaplan-Meier Curves Summarizing Time to Treatment Failure on or after Week 6 (Study UV I) or Week 2 (Study UV II)**





Note: P#=Placebo (Number of Events/Number at Risk); A#=Adalimumab (Number of Events/Number at Risk).

In Study UV I statistically significant differences in favour of adalimumab vs placebo were observed for each component of treatment failure. In Study UV II, statistically significant differences were observed for visual acuity only, but the other components were numerically in favour of adalimumab.

Of the 424 subjects included in the uncontrolled long-term extension of Studies UV I and UV II, 60 subjects were regarded ineligible (e.g., due to deviations or due to complications secondary to diabetic retinopathy, due to cataract surgery or vitrectomy) and were excluded from the primary analysis of efficacy. Of the 364 remaining patients, 269 evaluable patients (74%) reached 78 weeks of open-label adalimumab treatment. Based on the observed data approach, 216 (80.3%) were in quiescence (no active inflammatory lesions, AC cell grade  $\leq 0.5+$ , VH grade  $\leq 0.5+$ ) with a concomitant steroid dose  $\leq 7.5$  mg per day, and 178 (66.2%) were in steroid-free quiescence. BCVA was either improved or maintained ( $< 5$  letters deterioration) in 88.6% of the eyes at Week 78. Data beyond Week 78 were generally consistent with these results but the number of enrolled subjects declined after this time. Overall, among the patients who discontinued the study, 18% discontinued due to adverse events, and 8% due to insufficient response to adalimumab treatment.

### Quality of Life

Patient reported outcomes regarding vision-related functioning were measured in both clinical studies, using the NEI VFQ-25. Adalimumab was numerically favoured for the majority of

subscores with statistically significant mean differences for general vision, ocular pain, near vision, mental health, and total score in Study UV I, and for general vision and mental health in Study UV II. Vision related effects were not numerically in favour of adalimumab for colour vision in Study UV I and for colour vision, peripheral vision and near vision in Study UV II.

### ***Paediatric Uveitis***

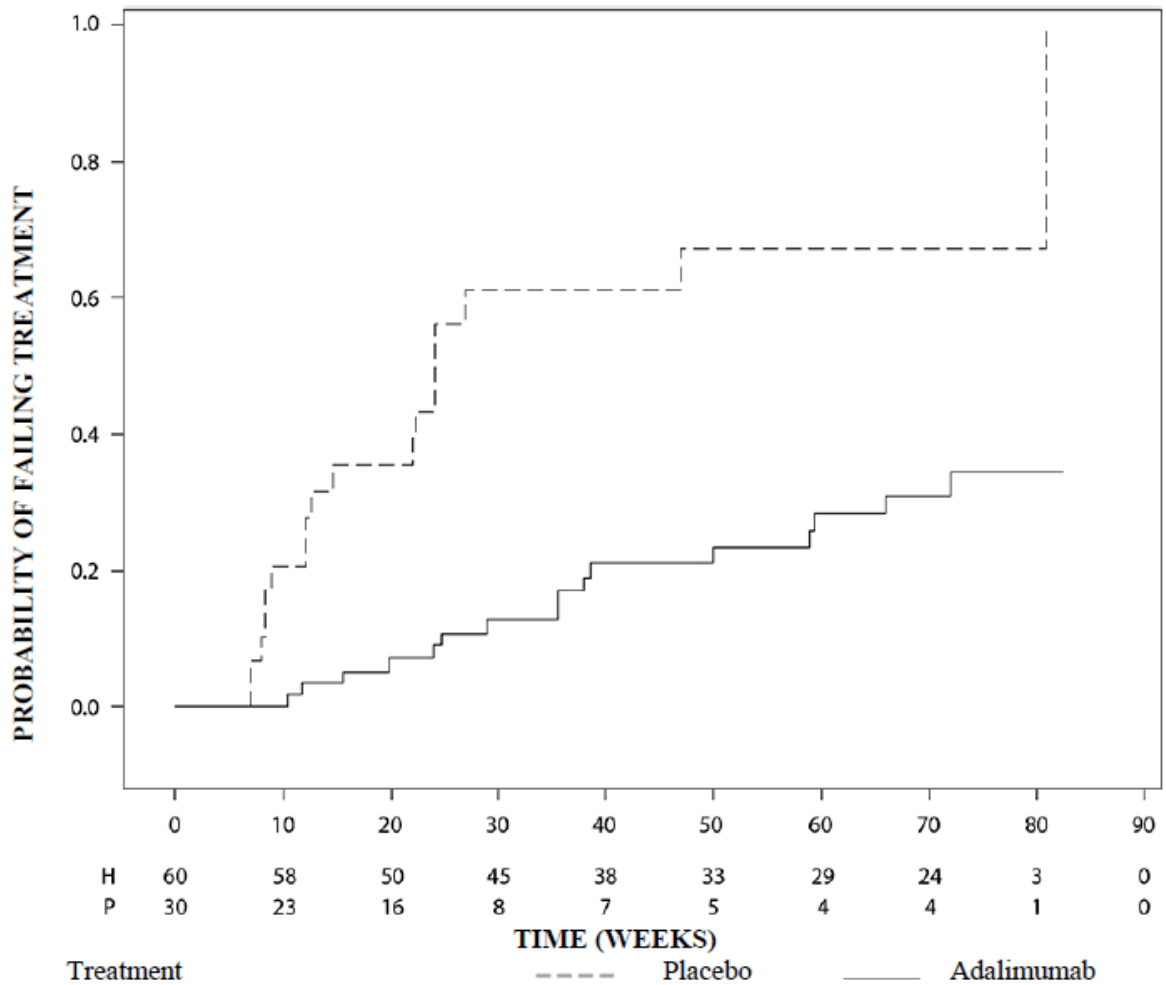
The safety and efficacy of adalimumab was assessed in a randomised, double-masked, controlled study of 90 paediatric patients from 2 to < 18 years of age with active JIA-associated noninfectious anterior uveitis who were refractory to at least 12 weeks of methotrexate treatment. Patients received either placebo or 20 mg adalimumab (if < 30 kg) or 40 mg adalimumab (if  $\geq$  30 kg) every other week in combination with their baseline dose of methotrexate.

The primary endpoint was 'time to treatment failure'. The criteria determining treatment failure were worsening or sustained non-improvement in ocular inflammation, partial improvement with development of sustained ocular co-morbidities or worsening of ocular co-morbidities, non-permitted use of concomitant medications, and suspension of treatment for an extended period of time.

### **Clinical Response**

Adalimumab significantly delayed the time to treatment failure, as compared to placebo (see Figure 3,  $P < 0.0001$  from log rank test). The median time to treatment failure was 24.1 weeks for subjects treated with placebo, whereas the median time to treatment failure was not estimable for subjects treated with adalimumab because less than one-half of these subjects experienced treatment failure. Adalimumab significantly decreased the risk of treatment failure by 75% relative to placebo, as shown by the hazard ratio (HR = 0.25 [95% CI: 0.12, 0.49]).

**Figure 3. Kaplan-Meier Curves Summarizing Time to Treatment Failure in the Paediatric Uveitis Study**



Note: P=Placebo (Number at Risk); H=Adalimumab (Number at Risk).

### Immunogenicity

Anti-adalimumab antibodies may develop during adalimumab treatment. Formation of anti-adalimumab antibodies is associated with increased clearance and reduced efficacy of adalimumab. There is no apparent correlation between the presence of anti-adalimumab antibodies and the occurrence of adverse events.

### ABRILADA Clinical Study – Rheumatoid Arthritis

The biosimilar clinical development program for ABRILADA included a randomised, double-blind, active-controlled trial in subjects with moderately to severely active RA and an inadequate response to background MTX.

Study B5381002 was a multi-national, double-blind, randomised, comparative efficacy and safety study of 597 subjects designed to demonstrate the absence of clinically meaningful differences in the efficacy, safety and immunogenicity of ABRILADA and Humira-EU (the EU reference product), and to evaluate the safety and immunogenicity of ABRILADA after treatment transition from Humira-EU to ABRILADA. The dose regimen was 40 mg injected subcutaneously every other week. The primary efficacy endpoint was ACR20 response rate at Week 12. Secondary endpoints included the ACR20 time course to Week 26, ACR50/70, DAS28-CRP, European League Against Rheumatism (EULAR) response, and ACR/EULAR remission evaluations. At Week 26, 50% of the Humira-EU arm was blindly re-randomised to the ABRILADA arm. At Week 52, all patients received open-label ABRILADA for an additional 24 weeks.

For the ACR20 primary endpoint at Week 12, observed response rates were 68.7% for ABRILADA and 72.7% for Humira-EU. The primary analysis for ACR20 at Week 12 was performed with non-response imputation (NRI) for subjects who discontinued treatment earlier than Week 12 or had a missing Week 12 assessment; the Week 12 ACR20 response rates (ITT; NRI) were 68.4% and 71.1%. In both ITT and PP populations, the 2-sided 95% CIs and 90% CIs of the treatment difference in Week 12 ACR20 response rates between the 2 groups were entirely contained within a symmetric equivalence margin of (-14.0% to 14.0%) and an asymmetric equivalence margin of (-12.0% to 15.0%), demonstrating therapeutic equivalence (similarity) between ABRILADA and HUMIRA-EU treatments.

Similar responses between ABRILADA and Humira-EU treatments were observed at each study visit up to Week 26 as measured by ACR20, ACR50, ACR70, individual ACR parameters (including HAQ-DI), DAS28-CRP, EULAR response, DAS remission and ACR/EULAR remission. No clinically meaningful differences in safety or immunogenicity were found between ABRILADA and Humira-EU.

In line with the findings from the first treatment period, dosing up to Week 52 continued to show the absence of clinically meaningful differences in efficacy, PD, immunogenicity and safety among subjects receiving ABRILADA, Humira-EU, and subjects who transitioned from Humira-EU to ABRILADA.

Based on the comparative clinical efficacy and safety results obtained in Study B5381002 in subjects with RA, it is concluded that biosimilarity was demonstrated between ABRILADA and



Humira-EU. The totality of evidence supports that ABRILADA is biosimilar to Humira.

## 5.2 Pharmacokinetic properties

### Absorption and distribution

After subcutaneous administration of a single 40 mg dose, absorption and distribution of adalimumab was slow, with peak serum concentrations being reached about 5 days after administration. The average absolute bioavailability of adalimumab estimated from three studies following a single 40 mg subcutaneous dose was 64%. After single intravenous doses ranging from 0.25 to 10 mg/kg, concentrations were dose proportional. After doses of 0.5 mg/kg (~40 mg), clearances ranged from 11 to 15 mL/hour, the distribution volume ( $V_{ss}$ ) ranged from 5 to 6 litres and the mean terminal phase half-life was approximately two weeks ranging from 10 to 20 days across studies. Adalimumab concentrations in the synovial fluid from several rheumatoid arthritis patients ranged from 31-96% of those in serum.

Following subcutaneous administration of 40 mg of adalimumab every other week in adult rheumatoid arthritis (RA) patients the mean steady-state trough concentrations were approximately 5 µg/mL (without concomitant methotrexate) and 8 to 9 µg/mL (with concomitant methotrexate), respectively. MTX reduced adalimumab apparent clearance after single and multiple dosing by 29% and 44% respectively, in patients with RA. The serum adalimumab trough levels at steady-state increased roughly proportionally with dose following 20, 40 and 80 mg subcutaneous dosing every other week and every week. In long-term studies with dosing more than two years, there was no evidence of changes in clearance over time.

Adalimumab mean steady-state trough concentrations were slightly higher in psoriatic arthritis patients treated with 40 mg adalimumab every other week (6 to 10 µg/mL and 8.5 to 12 µg/mL, without and with MTX, respectively) compared to the concentrations in RA patients treated with the same dose.

The pharmacokinetics of adalimumab in patients with AS were similar to those in patients with RA.

In Study JIA-I for patients with polyarticular JIA who were 4 to 17 years of age, the mean steady-state trough serum adalimumab concentrations for patients weighing < 30 kg receiving

20 mg adalimumab subcutaneously every other week as monotherapy or with concomitant MTX were 6.8 µg/mL and 10.9 µg/mL, respectively. The mean steady-state trough serum adalimumab concentrations for patients weighing  $\geq 30$  kg receiving 40 mg adalimumab subcutaneously every other week as monotherapy or with concomitant MTX were 6.6 µg/mL and 8.1 µg/mL, respectively.

In patients with polyarticular JIA who were 2 to <4 years old or aged 4 and above weighing < 15 kg dosed with adalimumab 24 mg/m<sup>2</sup>, the mean trough steady-state serum adalimumab concentrations was 6.0 ± 6.1 µg/mL (101% CV) for adalimumab without concomitant methotrexate and 7.9 ± 5.6 µg/mL (71.2% CV) with concomitant methotrexate.

Following the administration of 24 mg/m<sup>2</sup> (up to a maximum of 40 mg) subcutaneously every other week to patients with enthesitis-related arthritis who were 6 to 17 years, the mean trough steady-state (values measured at Week 24) serum adalimumab concentrations were 8.8 ± 6.6 µg/mL for adalimumab without concomitant methotrexate and 11.8 ± 4.3 µg/mL with concomitant methotrexate.

Following subcutaneous administration of 40 mg of adalimumab every other week in adult nonradiographic axial spondyloarthritis patients, the mean (±SD) trough steady-state concentration at Week 68 was 8.0 ± 4.6 µg/mL.

In adult patients with psoriasis, the mean steady-state trough concentration was 5 µg/mL during adalimumab 40 mg every other week monotherapy treatment.

Following the administration of 0.8 mg/kg (up to a maximum of 40 mg) subcutaneously every other week to paediatric patients with chronic plaque psoriasis, the mean ± SD steady-state adalimumab trough concentration was approximately 7.4 ± 5.8 µg/mL (79% CV).

In adult patients with hidradenitis suppurativa, a dose of 160 mg adalimumab on Week 0 followed by 80 mg on Week 2 achieved serum adalimumab trough concentrations of approximately 7 to 8 µg/mL at Week 2 and Week 4. The mean steady-state trough concentration at Week 12 through Week 36 were approximately 8 to 10 µg/mL during adalimumab 40 mg every week treatment.

Adalimumab exposure in adolescent HS patients was predicted using population pharmacokinetic

modelling and simulation based on cross-indication pharmacokinetics in other paediatric patients (paediatric psoriasis, juvenile idiopathic arthritis, paediatric Crohn's disease, and enthesitis-related arthritis). The recommended adolescent HS dosing schedule is 40 mg every other week. Since exposure to adalimumab can be affected by body size, adolescents with higher body weight and inadequate response may benefit from receiving the recommended adult dose of 40 mg every week.

In patients with Crohn's disease, the loading dose of 80 mg adalimumab on Week 0 followed by 40 mg adalimumab on Week 2 achieves serum adalimumab trough concentrations of approximately 5.5 µg/mL during the induction period. A loading dose of 160 mg adalimumab on Week 0 followed by 80 mg adalimumab on Week 2 achieves serum adalimumab trough concentrations of approximately 12 µg/mL during the induction period. Mean steady-state trough levels of approximately 7 µg/mL were observed in Crohn's disease patients who received a maintenance dose of 40 mg adalimumab every other week.

In paediatric patients with moderate to severe CD, the open-label adalimumab induction dose was 160/80 mg or 80/40 mg at Weeks 0 and 2, respectively, dependent on a body weight cut-off of 40 kg. At Week 4, patients were randomised 1:1 to either the Standard Dose (40/20 mg eow) or Low Dose (20/10 mg eow) maintenance treatment groups based on their body weight. The mean (±SD) serum adalimumab trough concentrations achieved at Week 4 were 15.7 ± 6.6 µg/mL for patients  $\geq$  40 kg (160/80 mg) and 10.6 ± 6.1 µg/mL for patients < 40 kg (80/40 mg).

For patients who stayed on their randomised therapy, the mean (±SD) adalimumab trough concentrations at Week 52 were 9.5 ± 5.6 µg/mL for the Standard Dose group and 3.5 ± 2.2 µg/mL for the Low Dose group. The mean trough concentrations were maintained in patients who continued to receive adalimumab treatment eow for 52 weeks. For patients who dose escalated from eow to weekly regimen, the mean (±SD) serum concentrations of adalimumab at Week 52 were 15.3 ± 11.4 µg/mL (40/20 mg, weekly) and 6.7±3.5 µg/mL (20/10 mg, weekly).

In patients with UC, the loading dose of 160 mg adalimumab on Week 0 followed by 80 mg adalimumab on Week 2 achieves mean serum adalimumab trough levels of approximately 12 µg/mL at Week 2 and Week 4. Mean steady-state trough level of approximately 8 µg/mL was observed at Week 52 in UC patients after receiving a dose of 40 mg adalimumab every other week, and approximately 15 µg/mL at Week 52 in UC patients who increased to a dose of 40 mg

adalimumab every week.

In adult patients with uveitis, a loading dose of 80 mg adalimumab on Week 0 followed by 40 mg adalimumab every other week starting at Week 1, resulted in mean steady-state concentrations of approximately 8 to 10 µg/mL.

Adalimumab exposure in paediatric uveitis patients was predicted using population pharmacokinetic modelling and simulation based on cross-indication pharmacokinetics in other paediatric patients (paediatric psoriasis, juvenile idiopathic arthritis, paediatric Crohn's disease, and enthesitis-related arthritis). No clinical exposure data are available on the use of a loading dose in children < 6 years. The predicted exposures indicate that in the absence of methotrexate, a loading dose may lead to an initial increase in systemic exposure.

Population pharmacokinetic and pharmacokinetic/pharmacodynamic modelling and simulation predicted comparable adalimumab exposure and efficacy in patients treated with 80 mg every other week when compared with 40 mg every week (including adult patients with RA, HS, UC, CD or Ps, patients with adolescent HS, and paediatric patients  $\geq$  40 kg with CD).

Exposure-response relationship in paediatric population

On the basis of clinical trial data in patients with JIA (pJIA and ERA), an exposure-response relationship was established between plasma concentrations and PedACR 50 response. The apparent adalimumab plasma concentration that produces half the maximum probability of PedACR 50 response (EC<sub>50</sub>) was 3 µg/mL (95% CI: 1-6 µg/mL).

Exposure-response relationships between adalimumab concentration and efficacy in paediatric patients with severe chronic plaque psoriasis were established for PASI 75 and PGA clear or minimal, respectively. PASI 75 and PGA clear or minimal increased with increasing adalimumab concentrations, both with a similar apparent EC<sub>50</sub> of approximately 4.5 µg/mL (95% CI 0.4-47.6 and 1.9-10.5, respectively).

## **Elimination**

Population pharmacokinetic analyses in patients with RA revealed that there was a trend toward higher apparent clearance of adalimumab in the presence of anti-adalimumab antibodies, and

lower clearance with increasing age in patients aged 40 to > 75 years.

Minor increases in apparent clearance were also predicted in RA patients receiving doses lower than the recommended dose and in RA patients with high rheumatoid factor or CRP concentrations. These increases are not likely to be clinically important.

No gender-related pharmacokinetic differences were observed after correction for a patient's body weight. Healthy volunteers and patients with rheumatoid arthritis displayed similar adalimumab pharmacokinetics.

### **Hepatic or renal impairment**

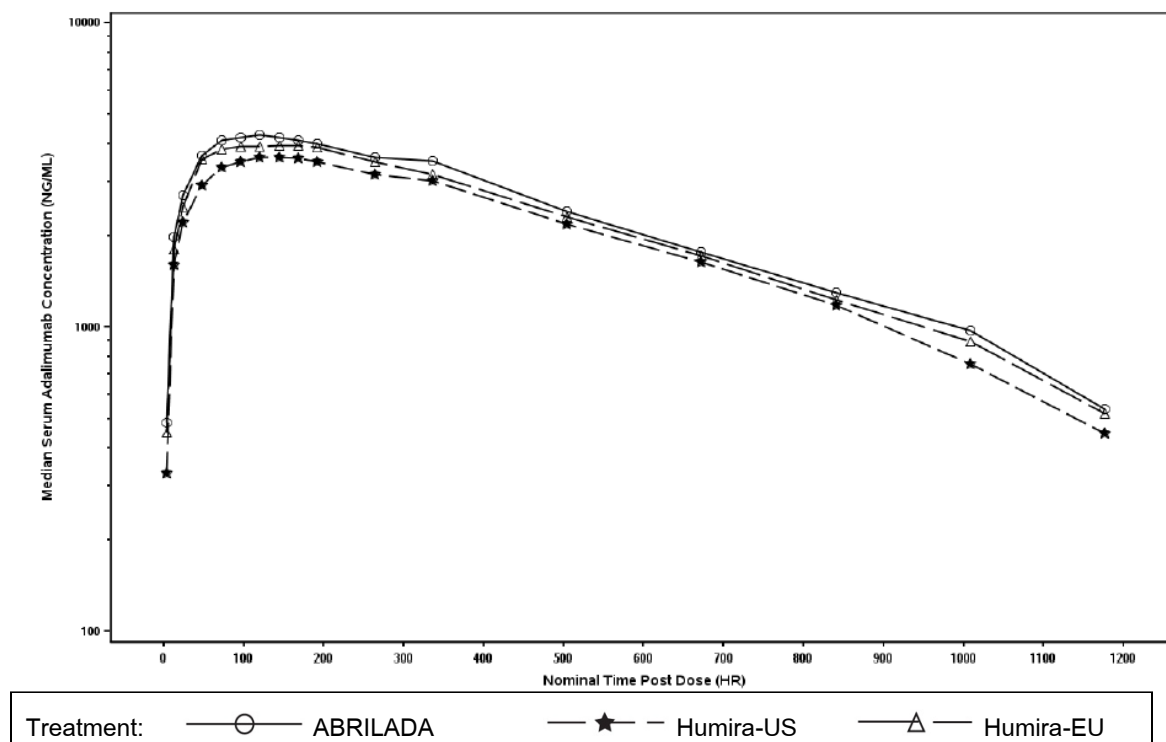
Adalimumab has not been studied in patients with hepatic or renal impairment.

### **ABRILADA Pharmacokinetic Similarity Study**

The pharmacokinetic (PK) similarity of ABRILADA and Humira was evaluated in the clinical development program. Study B5381007 was a three-arm, parallel-group, double-blind, randomised (1:1:1), single dose pivotal PK similarity study that compared the PK of ABRILADA, Humira-EU (EU reference product) and Humira-US (reference product) following subcutaneous administration of 40 mg to healthy adult subjects.

The 3 study drugs exhibited similar median PK profiles, which were characterized by an increase in serum drug concentrations to  $C_{max}$  at approximately 5-6 days, after which the concentrations exhibited a steady decline to Day 50.

**Figure 4. Median Serum Concentration-Time Profiles of ABRILADA, Humira-US and Humira-EU Following a Single 40 mg Subcutaneous Dose to Healthy Subjects**



Consistent with the median concentration-time profiles, the mean  $C_{max}$ ,  $AUC_{0-2wk}$ ,  $AUC_t$  and  $AUC_{inf}$  estimates were similar among the 3 study treatments. The inter-subject variability for each of the PK parameters, though considerable, was similar across the 3 study drugs, with CV values of 28-29%, 26-29%, 29-33%, and 33-40% for  $C_{max}$ ,  $AUC_{0-2wk}$ ,  $AUC_t$  and  $AUC_{inf}$ , respectively.

**Table 30. Mean ( $\pm$ SD) Pharmacokinetic Parameter Estimates of ABRILADA, Humira-US and Humira-EU (Study B5381007)**

Parameters (Units)	ABRILADA	Humira-US	Humira-EU
Subjects, n	N = 106	N = 101	N = 104
$C_{max}$ ( $\mu$ g/mL)	$4.53 \pm 1.27$	$4.04 \pm 1.18$	$4.09 \pm 1.17$
$T_{max}$ (h) <sup>*</sup>	120 (48, 362)	144 (48, 363)	132 (24, 336)
$AUC_{0-2wk}$ ( $\mu$ g·h/mL)	$1254 \pm 348.01$	$1101 \pm 289.57$	$1130 \pm 332.50$
$AUC_t$ ( $\mu$ g·h/mL)	$2586 \pm 858.85$	$2281 \pm 705.92$	$2392 \pm 697.93$
$AUC_{inf}$ ( $\mu$ g·h/mL) <sup>†</sup>	$3113 \pm 1254.0$	$2748 \pm 1078.8$	$2886 \pm 965.4$
CL/F (mL/h) <sup>†</sup>	$15.27 \pm 6.91$	$16.80 \pm 6.29$	$15.76 \pm 6.45$
$V_z/F$ (mL) <sup>†</sup>	$6422 \pm 2131.0$	$7095 \pm 2347.4$	$7244 \pm 3295.9$
$t_{1/2}$ (hr) <sup>†</sup>	$351.5 \pm 188.78$	$346.2 \pm 204.61$	$362.4 \pm 200.83$

Abbreviations: EU=European Union; n=total number of subjects in the treatment group in the indicated population;  $r^2$ =coefficient of determination; SD=standard deviation; US=United States.

\* Median (range) values are reported for  $T_{max}$ .

† Number of subjects with a well-defined disposition terminal phase (containing a minimal of 3 concentration-time data points and with  $r^2 \geq 0.9$ ), permitting reliable estimation of the slope of the terminal phase ( $\lambda$ ) and therefore estimations of  $AUC_{inf}$ ,  $CL/F$ ,  $V_z/F$  and  $t_{1/2}$ , was 103, 102 and 99 in the ABRILADA, Humira-EU and Humira-US groups, respectively.

Table 31 summarizes the ratio of adjusted geometric means and the 90% CIs for the primary PK parameter comparisons. For the PK similarity comparisons of ABRILADA to each of the comparator products (Humira-EU and Humira-US), the 90% CIs for the test-to-reference ratios of  $C_{max}$ ,  $AUC_{0-2wk}$ ,  $AUC_t$ , and  $AUC_{inf}$  were all contained within the pre-specified acceptance criteria of 80.00% to 125.00%.

In addition, for the PK similarity comparison of Humira-EU to Humira-US, the 90% CIs for the test-to-reference ratios of  $C_{max}$ ,  $AUC_{0-2wk}$ ,  $AUC_t$ , and  $AUC_{inf}$  were all contained within the pre-specified acceptance criteria of 80.00% to 125.00%.

**Table 31. Summary of Statistical Comparisons of PK Exposure Parameters ( $C_{max}$ ,  $AUC_{0-2wk}$ ,  $AUC_t$ , and  $AUC_{inf}$ ) between Test and Comparator Products (Study B5381007)**

Parameter (units)	Adjusted Geometric Means		Ratio (Test/Comparator) of Adjusted Means <sup>a</sup>	90% CI for Ratio <sup>a</sup>
	Test	Comparator		
	<b>ABRILADA (Test) vs Humira-EU(Comparator)</b>			
$C_{max}$ (µg/mL)	4.34	3.90	111.36	103.97-119.27
$AUC_{0-2wk}$ (µg•h/mL)	1199	1072	111.88	104.19-120.15
$AUC_t$ (µg•h/mL)	2430	2275	106.80	98.76-115.49
$AUC_{inf}$ (µg•h/mL)	2866	2718	105.44	96.43-115.29
<b>ABRILADA (Test) vs Humira-US (Comparator)</b>				
$C_{max}$ (µg/mL)	4.34	3.89	111.64	104.18-119.64
$AUC_{0-2wk}$ (µg•h/mL)	1199	1064	112.73	104.92-121.12
$AUC_t$ (µg•h/mL)	2430	2172	111.87	103.39-121.05
$AUC_{inf}$ (µg•h/mL)	2866	2556	112.12	102.47-122.68
<b>Humira-EU (Test) vs Humira-US (Comparator)</b>				

Parameter (units)	Adjusted Geometric		Ratio (Test/Comparator) of Adjusted Means <sup>a</sup>	90% CI for Ratio <sup>a</sup>
	Means			
	Test	Comparator		
C <sub>max</sub> (µg/mL)	3.90	3.89	100.25	93.52-107.47
AUC <sub>0-2wk</sub> (µg•h/mL)	1072	1064	100.76	93.74-108.30
AUC <sub>t</sub> (µg•h/mL)	2275	2172	104.75	96.77-113.38
AUC <sub>inf</sub> (µg•h/mL)	2718	2556	106.34	97.17-116.37

Abbreviations: CI=confidence interval; EU=European Union; US=United States; vs=versus.

<sup>a</sup> The ratios (and 90% CIs) are expressed as percentages.

In conclusion, Study B5381007 demonstrated PK similarity of ABRILADA to both Humira-US and Humira-EU. PK similarity was also demonstrated for Humira-EU to Humira-US, thus, establishing a bridge for the use of the Humira-EU product in a subsequent clinical comparability Study B5381002.

Study B5381005 was an open-label, randomised (1:1), parallel-group, 2-arm, single dose PK comparability study to assess the PK of ABRILADA following subcutaneous administration in the lower abdomen or upper anterior thigh using a pre-filled syringe or a pre-filled pen in healthy adult subjects.

The 2 treatment arms exhibited comparable PK profiles, which were characterized by an increase in serum drug concentrations to C<sub>max</sub> at approximately 6-7 days, after which the concentrations exhibited a steady decline to Week 6.

Consistent with the mean concentration-time profiles, the mean C<sub>max</sub>, AUC<sub>0-2wk</sub>, AUC<sub>t</sub> and AUC<sub>0-inf</sub> estimates were similar between the 2 study arms (Table 32). The inter-subject variability for each of the PK parameters was similar across the 2 study arms, with CV values of 29-30%, 28-30%, 31-35%, and 32-36% for C<sub>max</sub>, AUC<sub>0-2wk</sub>, AUC<sub>t</sub> and AUC<sub>0-inf</sub>, respectively.

**Table 32. Arithmetic Mean (±SD) ABRILADA Pharmacokinetic Parameter Estimates**

Parameters (units)	PFS	PFP
Subjects, n	80	83
C <sub>max</sub> (µg/mL)	4.34 ± 1.28	4.65 ± 1.34
T <sub>max</sub> (hr) <sup>a</sup>	166 (47.7, 674)	142 (45.4, 336)



Parameters (units)	PFS	PFP
AUC <sub>0-2wk</sub> (µg·hr/mL)	1155 ± 342.28	1211 ± 333.32
AUC <sub>last</sub> (µg·hr/mL)	2227 ± 696.19	2241 ± 792.06
AUC <sub>inf</sub> (µg·hr/mL) <sup>b</sup>	2291 ± 823.86	2336 ± 757.19
CL/F (mL/hr) <sup>b</sup>	19.73 ± 6.99	19.42 ± 7.78
V <sub>z</sub> /F (mL) <sup>b</sup>	5472 ± 2043.4	5282 ± 2010.2
t <sub>½</sub> (hr) <sup>b</sup>	210.1 ± 84.55	209.2 ± 96.73

Abbreviations: hr=hour(s); CL/F=apparent clearance; n=number of subjects; PFP=pre-filled pen; PFS=pre-filled syringe; r<sup>2</sup>=the goodness-of-fit statistic from the regression; SD=standard deviation; V<sub>z</sub>/F=apparent volume of distribution.

- a. Median (range) values were reported for T<sub>max</sub>.
- b. Number of subjects with a well-defined terminal phase (containing a minimal of 3 concentration-time data points and with r<sup>2</sup> ≥ 0.9), permitting reliable estimation of AUC<sub>0-inf</sub>, CL/F, V<sub>z</sub>/F and t<sub>½</sub>, was 48 and 58 for the PFS and PFP treatment arms, respectively.

Table 33 summarizes the ratio of adjusted geometric means and the 90% confidence intervals (CIs) for the comparisons of primary (C<sub>max</sub> and AUC<sub>0-2wk</sub>) and secondary (AUC<sub>t</sub> and AUC<sub>0-inf</sub>) endpoints. For the PK comparisons between the 2 device study arms, the 90% CIs for the test-to-reference ratios of all primary and secondary PK endpoints were within the pre-specified acceptance window of 80.00% to 125.00%.

**Table 33. Summary of Statistical Comparisons of PK Exposure Parameters (C<sub>max</sub>, AUC<sub>0-2wk</sub>, AUC<sub>t</sub>, and AUC<sub>0-inf</sub>) for ABRILADA by Pre-filled Pen or Pre-filled Syringe Treatment Arms (B5381005)**

Parameter (units)	Adjusted Geometric Means			90% CI for Ratio <sup>a</sup>
	Test (PFP)	Comparator (PFS)	Ratio (Test/Comparator) of Adjusted Means <sup>a</sup>	
C <sub>max</sub> (µg/mL)	4.45	4.13	107.74	99.16-117.06
AUC <sub>0-2wk</sub> (µg·hr/mL)	1150	1097	104.89	95.76-114.89
AUC <sub>last</sub> (µg·hr/mL)	2042	2101	97.23	86.75-108.98
AUC <sub>inf</sub> (µg·hr/mL)	2203	2154	102.27	91.12-114.78

Abbreviations: CI=confidence interval; PFP=pre-filled pen; PFS=pre-filled syringe.

- <sup>a</sup> The ratios (and 90% CIs) were expressed as percentages.

In conclusion, the 90% CIs of the test-to-reference ratios for the primary PK parameters ( $C_{max}$  and  $AUC_{0-2wk}$ ) were within the pre-specified acceptance window of 80.00-125.00%, thus, PK comparability was demonstrated for ABRILADA following subcutaneous administration using either a pre-filled syringe or a pre-filled pen.

In Study B5381002 in Treatment Period 1, the mean and median serum drug concentrations were numerically higher for the ABRILADA arm compared to the Humira-EU arm; however, considerable overlap and high variability were observed for both treatment arms.

The concentrations of serum ABRILADA and Humira-EU were lower in anti-drug antibody (ADA) positive subjects compared to ADA negative subjects, and the impact of ADA on serum concentrations in ADA positive subjects was similar between treatment arms.

In Treatment Period 2, the mean and median serum drug concentrations were numerically slightly higher for the ABRILADA/ABRILADA and Humira-EU/ABRILADA groups as compared to the Humira-EU/Humira-EU group; however, given the considerable overlap in serum drug concentrations between the 3 treatment groups and the high variability observed in the data, these numerical differences are not considered to be clinically meaningful.

The impact of ADA on serum concentrations in ADA positive subjects was comparable among the 3 treatment groups. As expected, the serum drug trough concentrations were lower in ADA positive subjects compared to ADA negative subjects.

The PK of ABRILADA were also examined in two independent population PK analyses, one using pooled, single dose, densely sampled healthy adult data from a preliminary Study B5381001 and the pivotal Study B5381007, and the other using sparsely sampled data following multiple doses to RA subjects in Study B5381002.

After accounting for the impact of significant factors of ADA titer, body weight, serum albumin, and protein concentration differences in the clinical drug lots, the results of the healthy subject population PK analysis indicated that the CL/F estimate for ABRILADA was approximately 8% and 12% lower (i.e., higher systemic exposures) compared to the CL/F estimates for Humira-EU and Humira-US, respectively. Likewise, the CL/F estimate for PF-06410293 in the RA population PK analysis was lower compared to the estimate for Humira-EU, even after accounting for the

presence of ADA, body weight, and protein concentration in the clinical drug lots.

In conclusion, although the systemic exposures of ABRILADA were observed to be slightly higher compared to either Humira-EU or Humira-US, these differences are not considered to be clinically meaningful. Thus, the totality of the PK data provides clinical evidence of PK similarity between ABRILADA and Humira.

### **5.3 Preclinical safety data**

Non-clinical data reveal no special hazard for humans based on studies of single dose toxicity, repeated dose toxicity, and genotoxicity.

An embryo-foetal developmental toxicity/perinatal developmental study with adalimumab only has been performed in cynomolgus monkeys at 0, 30 and 100 mg/kg (9-17 monkeys/group) and has revealed no evidence of harm to the foetuses due to adalimumab. The high dose produced exposures 373 times that achieved with the maximum recommended human dose (MRHD) without methotrexate (on an AUC basis with maternal IV doses up to 100 mg/kg/week).

Neither carcinogenicity studies, nor a standard assessment of fertility and postnatal toxicity, were performed with adalimumab due to the lack of appropriate models for an antibody with limited cross-reactivity to rodent TNF and to the development of neutralising antibodies in rodents.

## **6. Pharmaceutical Particulars**

### **6.1 List of excipients**

L-Histidine/L-Histidine HCl monohydrate, Sucrose, Edetate Disodium Dihydrate, L-Methionine, Polysorbate 80 and water for injection

### **6.2 Incompatibilities**

In the absence of compatibility studies, this medicinal product must not be mixed with other medicinal products.

### **6.3 Shelf life**

Please see detail on the carton

## **6.4 Special precautions for storage**

### **Pre-filled syringe**

Store in a refrigerator (2°C–8°C). Do not freeze. Keep the pre-filled syringe in its outer carton in order to protect from light.

A single ABRILADA pre-filled syringe may be stored at temperatures up to a maximum of 30°C for a period of up to 30 days. The syringe must be protected from light and discarded if not used within the 30-day period.

### **Pre-filled pen**

Store in a refrigerator (2°C–8°C). Do not freeze. Keep the pre-filled pen in its outer carton in order to protect from light.

A single ABRILADA pre-filled pen may be stored at temperatures up to a maximum of 30°C for a period of up to 30 days. The syringe or pen must be protected from light and discarded if not used within the 30-day period.

## **6.5 Nature and contents of container**

### **ABRILADA 40 mg solution for injection in pre-filled syringe**

ABRILADA 40 mg solution for injection in single use pre-filled syringe (type I glass) with a plunger stopper (chlorobutyl rubber) and a needle with a needle shield (thermoplastic elastomer).

Packs of:

- 1 pre-filled syringe (0.8 mL sterile solution), each pre-filled syringe is in a blister.
- 2 pre-filled syringes (0.8 mL sterile solution), each pre-filled syringe is in a blister.
- 4 pre-filled syringes (0.8 mL sterile solution), each pre-filled syringe is in a blister.
- 6 pre-filled syringes (0.8 mL sterile solution), each pre-filled syringe is in a blister.

## **ABRILADA 40 mg solution for injection in pre-filled pen**

ABRILADA 40 mg solution for injection in single use pre-filled pen for patient use containing a pre-filled syringe. The syringe inside the pen is made from type 1 glass with a plunger stopper (chlorobutyl rubber) and a needle with a needle shield (thermoplastic elastomer).

Packs of:

- 1 pre-filled pen (0.8 mL sterile solution).
- 2 pre-filled pens (0.8 mL sterile solution).
- 4 pre-filled pens (0.8 mL sterile solution).
- 6 pre-filled pens (0.8 mL sterile solution).

Not all presentations or pack sizes may be marketed.

## **7. Marketing Authorization Holder**

Pfizer (Thailand) Limited

## **8. Marketing Authorization Numbers**

## **9. Date of Authorization**

## **10. Date of Revision of the Text**

10 April 2020